



Serving Alachua
Bradford • Columbia
Dixie • Gilchrist • Hamilton
Lafayette • Levy • Madison
Suwannee • Taylor • Union Counties

2009 NW 67th Place, Gainesville, FL 32653-1603 • 352.955.2200

April 1, 2021

TO: Levy County Transportation Disadvantaged Coordinating Board
FROM: Lynn Godfrey, AICP, Senior Planner
SUBJECT: Meeting Announcement

The Levy County Transportation Disadvantaged Coordinating Board will hold a business meeting **Thursday, April 15, 2021 at 10:00 a.m.** or as soon thereafter the public workshop in the **Board of County Commissioners Meeting Room in the Levy County Courthouse located at 310 School Street, Bronson, Florida.**

The Centers for Disease Control and Prevention social/physical distancing guidelines will be followed in the meeting room. Wearing of face coverings will be required. Meeting participants must stay at least six feet (about two arms' length) from other persons. Due to social distancing requirements, there will be limitations on the number of persons permitted to enter the meeting room and/or building. To keep the meeting room attendance to a maximum of ten persons, the meeting will also be conducted via communications media technology in the following format:

DIAL IN NUMBER: **Toll free 1.888.585.9008**

CONFERENCE CODE: **864 183 272**

According to the Centers for Disease Control and Prevention, individuals at the greatest risk for severe illness from COVID-19 are those aged 65 or older. There are also other factors that can increase your risk for severe illness such as having underlying medical conditions. We encourage Board members who may have an increased risk of severe illness from COVID-19 to participate via communications media technology.

Attached is the draft meeting agenda. If you have any questions concerning the meeting, please do not hesitate to contact me at 1-800-226-0690 extension 110.

Pursuant to the provisions of the Americans with Disabilities Act, any person requiring special accommodations to participate in this public meeting is asked to advise our office at least **2 business days** before the meeting by contacting 352.955.2200 extension 110. If you are hearing or speech impaired, please contact our office using the Florida Relay Service, 1.800.955.8771 (TDD) or 1.800.955.8770 (Voice).

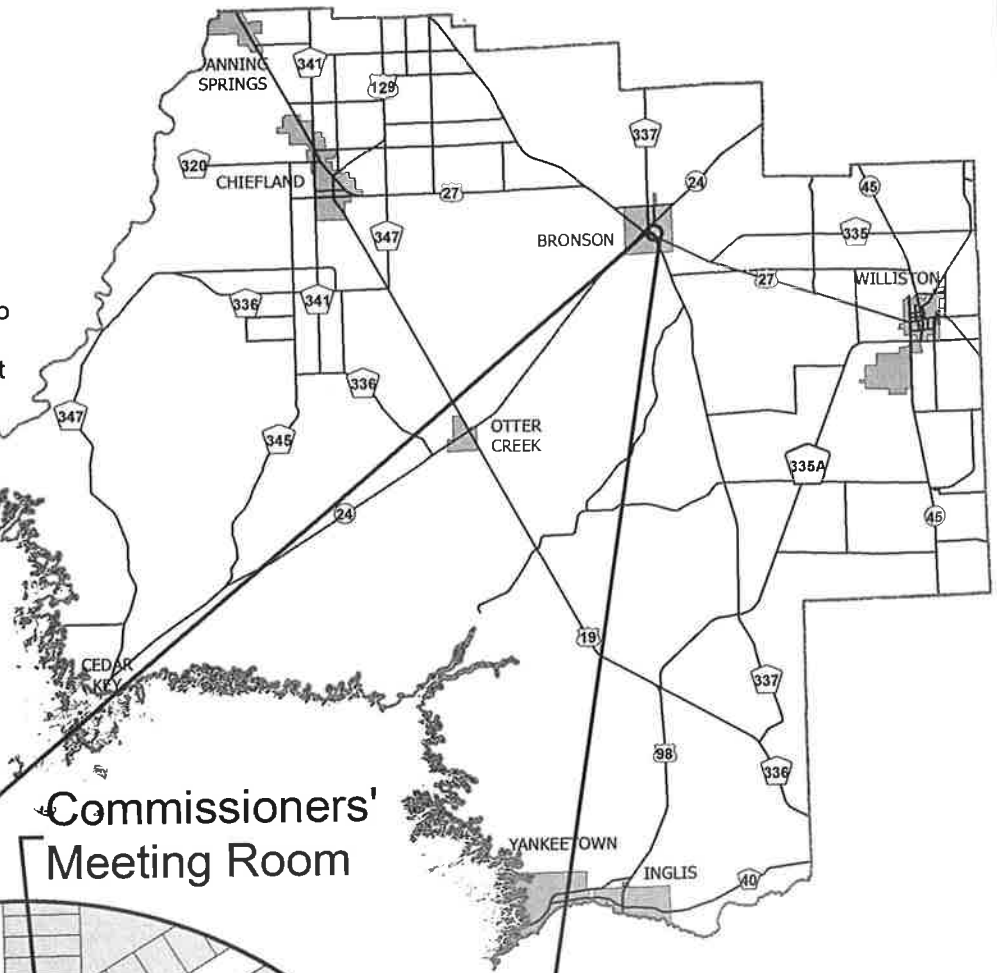
Attachment

T:\Lynn\TD2021\Levy\Memos\drftapr.docx

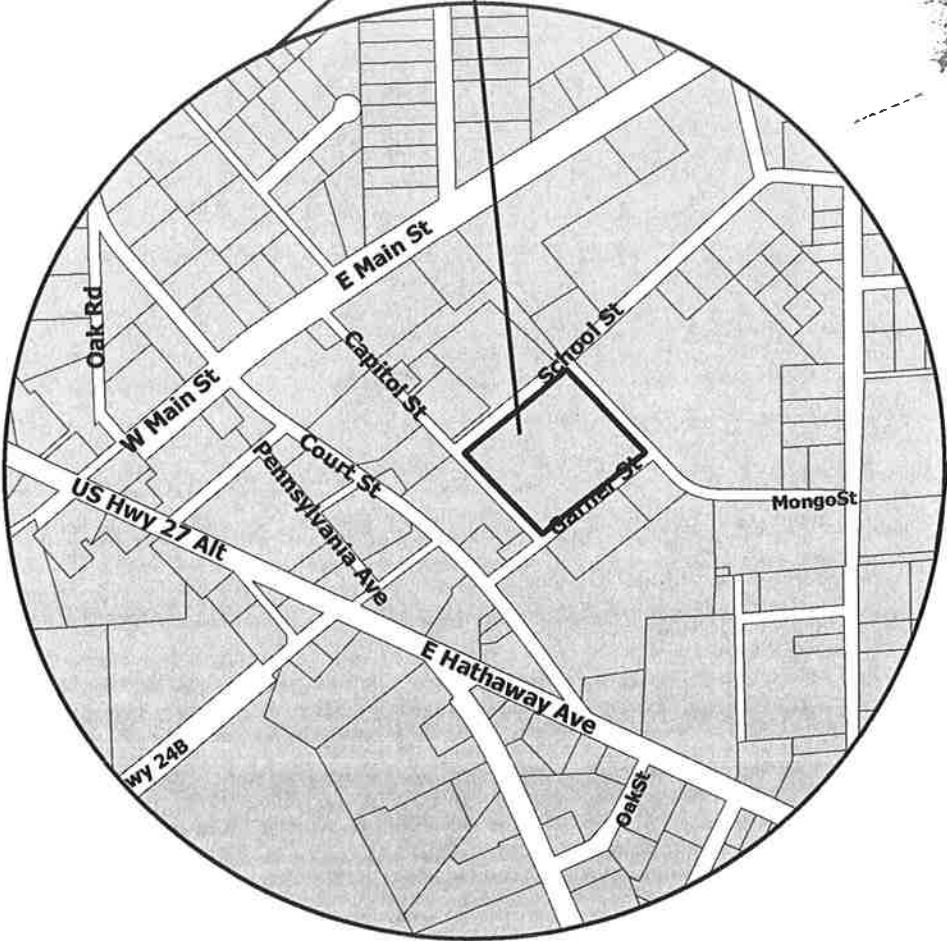
Dedicated to improving the quality of life of the Region's citizens,
by enhancing public safety, protecting regional resources,
promoting economic development and providing technical services to local governments.

Board of County Commissioners' Meeting Room, 310 School Street Bronson, Florida

Directions: From the intersection of State Road 24 (also known as West Thrasher Drive) and US Highway 27 Alt in the Town of Bronson, head south onto US Highway 27 Alt about one block. Turn left onto Main Street, and turn right onto Capital Street, about two blocks. Turn left onto School Street, and the Levy County Board of County Commissioners' Meeting Room will be on the right.



Commissioners'
Meeting Room



1 inch = 667 feet





Serving Alachua
Bradford • Columbia
Dixie • Gilchrist • Hamilton
Lafayette • Levy • Madison
Suwannee • Taylor • Union Counties

2009 NW 67th Place, Gainesville, FL 32653-1603 • 352.955.2200

**LEVY COUNTY
TRANSPORTATION DISADVANTAGED COORDINATING BOARD**

MEETING ANNOUNCEMENT AND AGENDA

Board of County Commissioners' Meeting Room
310 School Street (new meeting location)
Bronson, Florida
Dial in Number: Toll free 1.888.585.9008
Conference Code: 864 183 272

Thursday
April 15, 2021
10:00 a.m. or as
soon thereafter the
public workshop

I. BUSINESS MEETING – CALL TO ORDER

- | | | | |
|-----------|---|---------------|------------------------|
| A. | Approval of the Meeting Agenda | | ACTION REQUIRED |
| B. | Approval of the March 18, 2021 Minutes | Page 7 | ACTION REQUIRED |

II. NEW BUSINESS

- | | | | |
|-----------|--|----------------|------------------------|
| A. | 2020/25 Levy County Transportation Disadvantaged Service Plan Annual Update | Page 11 | ACTION REQUIRED |
|-----------|--|----------------|------------------------|

The Board needs to review and approve the 2020/25 Levy County Transportation Disadvantaged Service Plan Annual Update

- | | | | |
|-----------|--|-----------------|------------------------|
| B. | 2021/22 Rural Area Capital Assistance Grant Application | Page 107 | ACTION REQUIRED |
|-----------|--|-----------------|------------------------|

The Board needs to approve Levy County Transit's 2021/22 Rural Area Capital Assistance Grant application

- | | | | |
|-----------|---|-----------------|---------------------------|
| C. | Levy County Transit Operations Reports | Page 117 | NO ACTION REQUIRED |
|-----------|---|-----------------|---------------------------|

III. OTHER BUSINESS

Comments

IV. FUTURE MEETING DATES

- A. September 16, 2021 at 10:00 a.m.**
- B. November 18, 2021 at 10:00 a.m.**
- C. January 13, 2022 at 10:00 a.m.**
- D. April 14, 2022 at 10:00 a.m.**

* Please note that this is a tentative meeting schedule, all dates and times are subject to change.

If you have any questions concerning the meeting, please do not hesitate to contact me at 1-800-226-0690, extension 110.

**LEVY COUNTY
TRANSPORTATION DISADVANTAGED COORDINATING BOARD**

MEMBER/REPRESENTING	ALTERNATE/REPRESENTING
Commissioner John Meeks Local Elected Official/Chair	Not applicable
Sandra Collins Florida Department of Transportation Grievance/Annual Evaluation Committee Member	Lauren Adams Florida Department of Transportation
John Wisker Florida Department of Children and Families Grievance/Annual Evaluation Committee Member	Amy Burton Florida Department of Children and Families
Jeff Aboumrad Florida Department of Education	Peter Shepis Florida Department of Education
Matthew Pearson Florida Department of Elder Affairs Annual Evaluation Committee Member	Vacant Florida Department of Elder Affairs
Deweece Ogden Florida Agency for Health Care Administration Grievance/Annual Evaluation Committee Member	Pamela Hagley Florida Agency for Health Care Administration
Sheryl Dick-Stanford Florida Agency for Persons with Disabilities	Sylvia Bamburg Florida Agency for Persons with Disabilities
Larry Trowbridge Regional Workforce Board	Cindy LeCouris Regional Workforce Board
Tiffany McKenzie Central Florida Community Action Agency, Inc. Term ending June 30, 2023	Charles J. Harris, Jr. Central Florida Community Action Agency, Inc. Term ending June 30, 2023
Gary Masters Public Education Community Grievance Committee Member	Joseph Wain Public Education Community
Robert E. Lowyns Veterans Grievance/Annual Evaluation Committee Member Term ending June 30, 2023	Julie E. Rose Veterans Term ending June 30, 2023
Renate M. Cannon, Vice-Chair Citizen Advocate Term ending June 30, 2021	Vacant Citizen Advocate Term ending June 30, 2021
Tammy Jean Ippolito Citizen Advocate - User Term ending June 30, 2021	Vacant Citizen Advocate - User Term ending June 30, 2021
Vacant Persons with Disabilities Annual Evaluation Committee Member Term ending June 30, 2021	Vacant Persons with Disabilities Term ending June 30, 2021
Vacant Elderly Term ending June 30, 2023	Vacant Elderly Term ending June 30, 2023
Vacant Medical Community Term ending June 30, 2022	Vacant Medical Community Term ending June 30, 2022
Sandra Woodard Children at Risk Term ending June 30, 2022	Brooke Ward Children at Risk Term ending June 30, 2022
Vacant Private Transit Term ending June 30, 2022	Vacant Private Transit Term ending June 30, 2022

Note: Unless specified, members and alternates serve at the pleasure of the North Central Florida Regional Planning Council.

**LEVY COUNTY
TRANSPORTATION DISADVANTAGED COORDINATING BOARD**

MEETING MINUTES

Board of County Commissioners' Meeting Room
310 School Street
Bronson, Florida
Dial in Number: Toll free 1.888.585.9008
Conference Code: 864 183 272

Thursday
March 18, 2021
10:00 a.m.

VOTING MEMBERS PRESENT

Commissioner John Meeks, Chair
Sandra Collins, Florida Department of Transportation Representative
Sylvia Bamburg representing Sheryl Stanford, Florida Agency for Persons with Disabilities Representative
Cindy LeCouris, Regional Workforce Board Representative
Robert E. Lowyns, Veterans Representative
Gary Masters, Public Education Representative
Tiffany McKenzie, Central Florida Community Action Agency, Inc. Representative
Matthew Pearson, Florida Department of Elder Affairs Representative
John Wisker, Florida Department of Children and Families Representative
Dewece Ogden, Florida Agency for Health Care Administration Representative
Sandra Woodard, Children at Risk Representative

VOTING MEMBERS ABSENT

Jeff Aboumrad, Florida Department of Education Representative
Renate M. Cannon, Citizen Advocate, Vice-Chair
Tammy Ippolito, Citizen Advocate – User

OTHERS PRESENT

Connie Conley, Levy County Transit

STAFF PRESENT

Lynn Godfrey, North Central Florida Regional Planning Council

I. BUSINESS MEETING CALL TO ORDER

Ms. Lynn Godfrey, North Central Florida Regional Planning Council Senior Planner, stated that a physical quorum was not present, therefore, the Board cannot take official action on any agenda items.

The Board agreed to discuss the agenda items that do not require official action until a physical quorum is present.

A. Introduction to Florida’s Coordinated Transportation System

Ms. Godfrey discussed the organization of Florida’s Coordinated Transportation System and the requirements of Chapter 112, Florida Statutes concerning conflicts of interest and Florida’s Sunshine Law.

C. 2019/20 Annual Operating Report

Ms. Connie Conley, Levy County Transit Director, discussed the 2019/20 Annual Operating Report.

The Board reviewed the 2019/20 Annual Operating Report for Levy County.

E. Levy County Transit Operations Reports

Ms. Conley discussed the Levy County Transit operations reports.

Chair Meeks called the meeting to order at 10:30 a.m.

A. Invocation

Matthew Pearson gave the invocation.

B. Pledge of Allegiance

Chair Meeks led the Board in reciting the Pledge of Allegiance.

C. Roll Call

The roll was called by Ms. Godfrey, and, a quorum was declared present.

Ms. Godfrey asked the Board to take formal action to allow Board members participating via telecommunications technology to vote on agenda items.

ACTION: Gary Masters moved to allow Board members participating via communications media technology to vote on agenda items that require formal action due to the extraordinary circumstances related to the COVID-19 pandemic. Matthew Pearson seconded; motion passed unanimously.

D. Public Comments

There were no public comments.

E. Approval of the Meeting Agenda

ACTION: Cindy LeCouris moved to approve the meeting agenda. Matthew Pearson seconded; motion passed unanimously.

F. Approval of the September 17, 2020 Meeting Minutes

ACTION: Matthew Pearson moved to approve the September 17, 2020 meeting minutes. Robert Lowyns seconded; motion passed unanimously.

II. NEW BUSINESS

B. 2019/20 Annual Performance Evaluation

Ms. Godfrey stated that the Board is required to review Levy County Transit's performance as the Levy County Community Transportation Coordinator annually. She said the draft 2019/20 performance evaluation is included in the meeting materials for the Board's review.

The Board reviewed Levy County Transit's 2019/20 Annual Performance Evaluation.

ACTION: Tiffany McKenzie moved to approve Levy County Transit's 2019/20 Annual Performance Evaluation. Gary Masters seconded; motion passed unanimously.

D. Elect Vice-Chair

Chair Meeks asked if Ms. Cannon wanted to be re-elected as Vice-Chair.

Ms. Godfrey stated that Ms. Cannon was not present.

ACTION: Gary Masters moved to re-elect Renate Cannon as Vice-Chair. Robert Lowyns seconded; motion passed unanimously.

III. OTHER BUSINESS

A. Comments

Commissioner Meeks stated that he is glad to be Chair of the Board again.

IV. FUTURE MEETING DATES

Chair Meeks stated that the next meeting of the Board is scheduled for Thursday, April 15, 2021 at 10:00 a.m. He thanked all of the Board members for attending the meeting.

ADJOURNMENT

The meeting was adjourned at 11:00 a.m.

Chair

Date



Serving Alachua
Bradford • Columbia
Dixie • Gilchrist • Hamilton
Lafayette • Levy • Madison
Suwannee • Taylor • Union Counties

2009 NW 67th Place, Gainesville, FL 32653-1803 • 352.955.2200

April 1, 2021

TO: Levy County Transportation Disadvantaged Coordinating Board
FROM: Lynn Godfrey, AICP, Senior Planner
SUBJECT: 2020/25 Levy County Transportation Disadvantaged Service Plan Annual Update

STAFF RECOMMENDATION

Approve the 2020/25 Levy County Transportation Disadvantaged Service Plan Annual Update.

BACKGROUND

Chapter 427, Florida Statutes requires Levy County Transit prepare a Transportation Disadvantaged Service Plan in cooperation with the North Central Florida Regional Planning Council for the Board’s approval. This plan provides information needed by the Board to continually review and assess transportation disadvantaged needs for Levy County. The Service Plan must be submitted to the Florida Commission for the Transportation Disadvantaged annually.

Attached is the draft 2020/25 Levy County Transportation Disadvantaged Service Plan Annual Update. If you have any questions concerning the Plan, please do not hesitate to contact me at extension 110.

Attachment

T:\Lynn\TD2021\Levy\Memos\tdsp.docx

Levy County Transportation Disadvantaged Service Plan – Annual Update

July 1, 2020 - June 30, 2025

Levy County Transportation Disadvantaged
Coordinating Board



2020/25 Levy County Transportation Disadvantaged Service Plan – Annual Update

Approved by the
Levy County
Transportation Disadvantaged Coordinating Board

2009 NW 67th Place
Gainesville, FL 32653-1603
www.ncfrpc.org/mtpo
352.955.2000

John Meeks, Chair

with Assistance from



North Central Florida Regional Planning Council
2009 NW 67th Place
Gainesville, FL 32653-1603
www.ncfrpc.org
352.955.2200

and



Levy County Transit
970 E. Hathaway Avenue, Suite A
Bronson, FL 32621
352.486.3485

April 15, 2021

THIS PAGE LEFT BLANK INTENTIONALLY

Table of Contents

Chapter I: Development Plan.....	3
A. Introduction to The Service Area	3
B. Service Area Profile and Demographics	13
C. Service Analysis	22
Chapter II: Service Plan	33
A. Operations	33
B. Cost/Revenue Allocation and Rate Structure Justification.....	56
Chapter III: Quality Assurance.....	57
A. Community Transportation Coordinator Evaluation Process.....	57

Appendices

Appendix A: Levy County Transportation Disadvantaged Coordinating Board Grievance Procedures	A-1
Appendix B: Cost/Revenue Allocation and Rate Structure Justification	B-1
Appendix C: Vehicle Inventory	C-1
Appendix D: Safety Compliance Self Certification	D-1

THIS PAGE LEFT BLANK INTENTIONALLY

Chapter I: Development Plan

A. Introduction to The Service Area

The purpose of this section is to provide information about the organization and development of Florida's Transportation Disadvantaged Program in Levy County. This Plan shall serve as the Coordinated Public Transit-Human Services Transportation Plan under the federal Moving Ahead for Progress in the 21st Century Act (MAP-21). The Coordinated Public Transit-Human Services Transportation Plan identifies the transportation needs of individuals with disabilities, older adults and people with low incomes.

1. Background of Florida's Transportation Disadvantaged Program

Florida's Transportation Disadvantaged Program began in 1979 with the adoption of Chapter 427, Florida Statutes. The Florida Legislature adopted this legislation to provide transportation disadvantaged services in a coordinated fashion.

The transportation disadvantaged are defined in Chapter 427, Florida Statutes, as:

"those persons who because of physical or mental disability, income status, age are unable to transport themselves or purchase transportation and are, therefore, dependent on others to obtain access to health care, employment, education, shopping, social activities, or other life-sustaining activities or children who are handicapped or high-risk or at-risk as defined in s. 411.202, Florida Statutes."

In 1989, the Florida Legislature reviewed Chapter 427, Florida Statutes according to the State's Regulatory Sunset Act (Section 11.61, Florida Statutes). During this legislative review, the Legislature decided to reenact Chapter 427, Florida Statutes with several revisions.

In 1990, Rule 41-2 of the Florida Administrative Code was adopted to implement the provisions of Chapter 427, Florida Statutes. In addition, Rule 41-2 of the Florida Administrative Code assigns the Florida Commission for the Transportation Disadvantaged with the responsibility to accomplish the coordination of transportation services provided to the transportation disadvantaged.

The following sections discuss each of the major components of the Transportation Disadvantaged Program.

a. Florida Commission for the Transportation Disadvantaged

The Florida Commission for the Transportation Disadvantaged is an independent agency which serves as the policy development and implementing agency for Florida's Transportation Disadvantaged Program. The Florida Commission for the Transportation Disadvantaged reports to the Governor and Legislature.

According to Section 427.013, Florida Statutes, its purpose is to accomplish the coordination of transportation services provided to the transportation disadvantaged. Its responsibilities are set out in Section 427.013, Florida Statutes and include, among others:

- establishing statewide objectives for providing transportation services for the transportation disadvantaged;

- developing policies and procedures for the coordination of local government, federal and state funding for the transportation disadvantaged;
- identifying and eliminating barriers to coordination and accessibility of transportation services to the transportation disadvantaged;
- assisting communities in developing transportation systems designed to serve the transportation disadvantaged;
- assuring that all procedures, guidelines and directives issued by member departments are conducive to the coordination of transportation services;
- assuring that member departments purchase all trips within the coordinated system unless they use a more cost-effective alternative provider and providing, by rule, criteria and procedures for member departments to use if they wish to use an alternative provider;
- developing standards covering coordination, operation, costs and utilization of transportation disadvantaged services, including but not limited to acceptable ranges of trip costs for the various modes and types of transportation services provided and minimum performance standards for the delivery of services;
- approving appointments or terminations of Community Transportation Coordinators;
- making an annual report by January 1 to the Governor, the President of the Senate, and the Speaker of the House of Representatives;
- preparing a statewide five-year transportation disadvantaged plan;
- developing transportation disadvantaged training programs;
- designating an Official Planning Agency in areas where there is no Metropolitan Planning Organization;
- developing an allocation methodology that equitably distributes all transportation funds under the control of the commission to compensate counties, Community Transportation Coordinators, and other entities providing transportation disadvantaged services;
- developing a quality assurance and management review program.

The Florida Commission for the Transportation Disadvantaged consists of seven members, all of whom are appointed by the Governor for a 4-year term. The following conditions apply to the Florida Commission for the Transportation Disadvantaged:

- five of the members must have significant experience in the operation of a business;
- two of the members must have a disability and use the transportation disadvantaged system;
- members of the Florida Commission For The Transportation Disadvantaged must be a resident of the state and a registered voter;
- Each member shall represent the needs of the transportation disadvantaged throughout the state. A member may not subordinate the needs of the transportation disadvantaged in general in order to favor the needs of others residing in a specific location in the state;

- at any given time, at least one member must be at least 65 years of age; and
- within the 5 years immediately before appointment, or during term on the Florida Commission for the Transportation Disadvantaged, have or have had a financial relationship with, or represent or have represented as a lobbyist as defined in s. 11.045, the following:
 - a transportation operator;
 - a Community Transportation Coordinator;
 - a Metropolitan Planning Organization;
 - a Designated Official Planning Agency;
 - a purchaser agency;
 - a Local Coordinating Board;
 - a broker of transportation; or
 - a provider of transportation services.

b. Designated Official Planning Agency

The purpose of the Designated Official Planning Agency is to perform long-range transportation disadvantaged planning and assist the Florida Commission for the Transportation Disadvantaged and the Local Coordinating Board in implementing the Transportation Disadvantaged Program within a designated service area. Pursuant to Chapter 427, Florida Statutes and Rule Chapter 41-2, Florida Administrative Code, the Designated Official Planning Agency is required to:

- Appoint members of the Local Coordinating Board and provide sufficient staff support and resources to enable the Coordinating Board to fulfill its responsibilities.
- Appoint an elected official from Levy County to act as the official chairperson for all Coordinating Board meetings.
- Recommend an entity to serve as the Community Transportation Coordinator.
- Develop and annually update a Coordinated Transportation Development Plan (Transportation Disadvantaged Service Plan) in consultation with the Local Coordinating Board and Community Transportation Coordinator.
- Report to the Florida Commission for the Transportation Disadvantaged by September 15 all local government and direct federal transportation disadvantaged funds expended in its designated service area during the prior state fiscal year.

According to Rules 41-2.002(10) and 41-2.009(1), Florida Administrative Code, Metropolitan Planning Organizations are required to serve as the Designated Official Planning Agency in the areas they cover. Agencies eligible for selection as a Designated Official Planning Agency in areas not covered by a Metropolitan Planning Organization include county or city governments, regional planning councils, Metropolitan Transportation Planning Organizations from other areas, or local planning organizations which are currently performing planning activities in designated service areas.

The Florida Commission for the Transportation Disadvantaged selected the North Central Florida Regional Planning Council to serve as the Designated Official Planning Agency for Levy County's Transportation Disadvantaged Program in June 2015.

c. Local Coordinating Boards

The Designated Official Planning Agency is responsible for appointing a local coordinating board in each county or service area. The purpose of the Local Coordinating Board is to identify local service needs and to provide information, advice, and direction to the Community Transportation Coordinator on the coordination of services to be provided to the transportation disadvantaged. Also, each Coordinating Board is recognized as an advisory body to the Florida Commission for the Transportation Disadvantaged in its designated service area. Pursuant to Chapter 427 and Rule Chapter 41-2, the Local Coordinating Board is required to:

- Review and approve the Community Transportation Coordinator's Memorandum of Agreement and Transportation Disadvantaged Service Plan prior to submission to the Florida Commission for the Transportation Disadvantaged.
- Annually provide the Florida Commission for the Transportation Disadvantaged with an evaluation of the Community Transportation Coordinator's performance.
- Review the Community Transportation Coordinator's Annual Operating Report.
- In cooperation with the Community Transportation Coordinator, review and provide recommendations on all applications for local government, state or federal funds relating to transportation of the transportation disadvantaged in the designated service area to ensure that any expenditures within the designated service area are provided in the most cost-effective and efficient manner.
- Review coordination strategies or service provision to the transportation disadvantaged in the designated service area to seek innovative ways to improve cost-effectiveness, efficiency, safety, working hours, and types of service in an effort to increase ridership to a broader population.
- Appoint a Grievance Committee to process and investigate complaints from agencies, users, potential users of the system and the Community Transportation Coordinator in the designated service area, and make recommendations to the Local Coordinating Board for improvement of service.
- In coordination with the Community Transportation Coordinator, jointly develop applications for funds that may become available.
- Review and approve the Coordinated Transportation Development Plan (Transportation Disadvantaged Service Plan) for consistency with approved minimum guidelines and the goals and objectives of the Local Coordinating Board.
- Assist the Community Transportation Coordinator in establishing priorities with regard to the recipients of non-sponsored transportation disadvantaged services that are purchased with Transportation Disadvantaged Trust Fund moneys.

The Local Coordinating Board is composed of the following individuals who represent a variety of agencies and interests:

- a local elected official who acts as chairperson;
- a local representative of the Florida Department of Transportation;
- a local representative of the Florida Department of Children and Families;
- a representative of the Public Education Community;

- a person who is recognized by the Veterans Service Office as representing veterans in the county;
- a person who is recognized by the Florida Association for Community Action representing the economically disadvantaged in the county;
- a person over sixty years of age representing the elderly in the county;
- a disabled person representing the disabled in the county;
- two citizen advocate representatives in the county, one of whom must be a user of the system;
- a local representative for children at risk;
- In areas where they exist, the chairperson or designee of the local Mass Transit or Public Transit System's Board, except in cases where the Board is also the Community Transportation Coordinator;
- a local representative of the Florida Department of Elder Affairs;
- an experienced representative of the local private for-profit transportation industry or, in an area where such a representative is not available, a local private nonprofit representative except where said representative is also the Community Transportation Coordinator. In cases where no private for-profit or private non-profit representatives are available in the service area, this position will not exist on the Local Coordinating Board;
- a local representative of the Florida Agency for Health Care Administration;
- a local representative of the Florida Division of Vocational Rehabilitation or the Division of Blind Services, representing the Florida Department of Education;
- a representative of the Regional Workforce Development Board;
- a representative of the local medical community; and
- a local representative of the Florida Agency for Persons with Disabilities.

The membership of the Local Coordinating Board shall represent to the maximum degree possible, a cross section of the local community.

Except for the chairperson and agency representatives, the members of the Local Coordinating Board are appointed for three-year staggered terms with the initial membership being appointed equally for one, two, and three years.

d. Community Transportation Coordinator

The Community Transportation Coordinator is responsible for the short-range operational planning, administration, monitoring, coordination, arrangement and delivery of transportation disadvantaged services originating within its designated service area on a full-time basis. A Community Transportation Coordinator can be a public, private nonprofit or private for-profit entity and can provide transportation services, subcontract or broker transportation services or combine the two approaches. Under Rule 41-2.011(2), Florida Administrative Code, a Community Transportation Coordinator is required to subcontract or broker transportation services to transportation operators in situations where it is cost-effective and efficient to do so.

The Community Transportation Coordinator must enter into a Memorandum of Agreement each year with the Florida Commission for the Transportation Disadvantaged. The Memorandum of Agreement is recognizes the Community Transportation Coordinator as being responsible for the arrangement of the provision of transportation disadvantaged services for its designated service area. Community Transportation Coordinator responsibilities set out in Chapter 427, Florida Statutes and Rule Chapter 41-2, Florida Administrative Code include:

- being aware of all of the transportation disadvantaged resources available or planned in its designated service area in order to plan, coordinate and implement the most cost-effective transportation disadvantaged transportation system possible under existing conditions in the designated service area;
- collecting operating data and preparing an Annual Operating Report due to the Florida Commission for the Transportation Disadvantaged by September 15 of each year;
- working cooperatively with Region Workforce Boards to assist in the development of innovative transportation services for participants in welfare transitional programs;
- establishing priorities with regard to the recipients of transportation services purchased with Transportation Disadvantaged Trust Fund moneys.

2. Designation Date/History

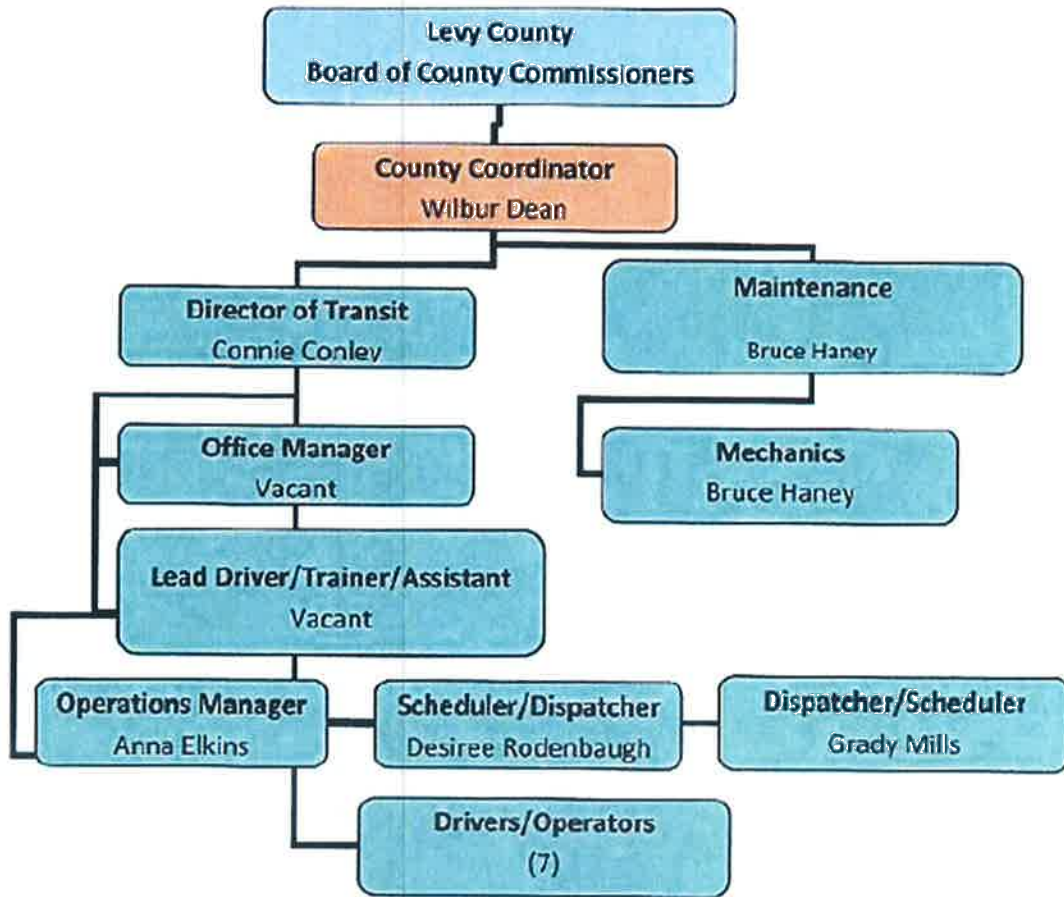
In 2002, the Levy County Board of County Commissioners created a County Transportation Department, which was formed for the purpose of administrating and operating the county's public transportation program. It conducted business under the name Nature Coast Transit and operated as a partial brokerage system providing transportation services and contracting with other operators to provide transportation services. During the 2008-2009 Fiscal Year, the Nature Coast Transit was renamed to Levy County Transit by the Board of County Commissioners.

Chapter 287.057(3) (e) 12, Florida Statutes, allows for contractual services or commodities provided by governmental entities to not be subject to competitive solicitation requirements. Rule 41-2.010 (2) of the Florida Administrative Code allows the selection of Community Transportation Coordinators without competitive acquisition upon the recommendation of the Designated Official Planning Agency.

The Florida Commission for the Transportation Disadvantaged designated the Levy County Board of County Commissioners the Community Transportation Coordinator for Levy County in April 2003. The Florida Commission for the Transportation Disadvantaged re-designated the Levy County Board of County Commissioners to serve as the Levy County Community Transportation Coordinator effective July 1, 2020.

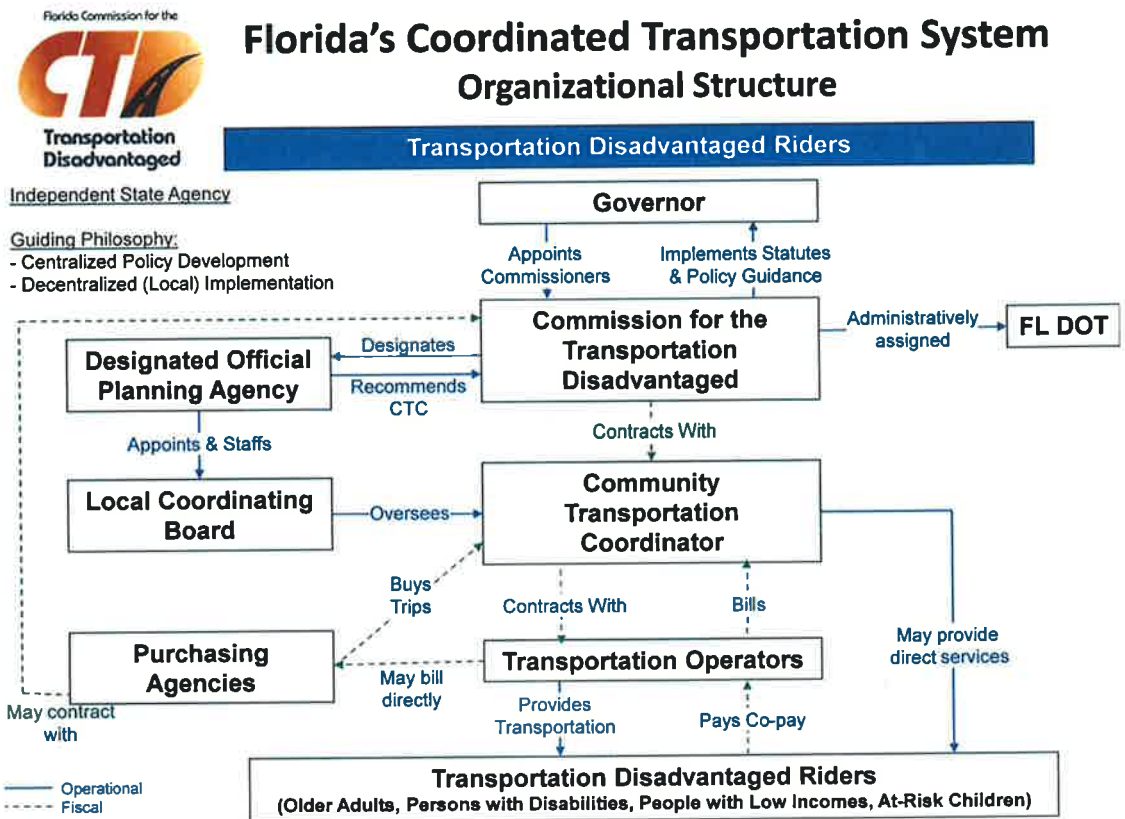
The following chart identifies Levy County Transit's organizational structure.

Levy County Transit Organization Chart



3. Florida’s Coordinated Transportation System Organization Chart

The following chart identifies the partners involved in Florida’s Transportation Disadvantaged Program.



4. Consistency Review of Other Plans

a. Local Government Comprehensive Plans

The local comprehensive planning process involves essentially four basic steps:

1. collection and analysis of pertinent data concerning the physical and socio-economic characteristics of the study area;
2. formulation of goals for future growth and development;
3. development of objectives and policies guided by the goals which are the essence of the Comprehensive Plan;
4. implementation of the Comprehensive Plan.

The 2020 – 2025 Levy County Transportation Disadvantaged Service Plan is consistent to the maximum extent feasible with the Levy County Comprehensive Plan. It should be noted that the County's Comprehensive Plan does not include a Mass Transit Element because the county has a population of less than 50,000 people or any goals, objectives or policies specifically relating to the transportation disadvantaged.

b. Regional Policy Plans

The North Central Florida Strategic Regional Policy Plan adopted in August 2018 is a long-range guide for the physical, economic, and social development of a planning region which identifies regional goals and policies. The plan contains regional goals and policies designed to promote a coordinated program of regional actions directed at resolving problems identified in the trends and conditions statements contained within each strategic regional subject area.

The following policies are included in the Strategic Regional Policy Plan:

REGIONAL GOAL 5.6. Reduce the unmet general trip demand of the north central Florida Transportation Disadvantaged population.

Policy 5.6.1. Improve mobility options for low-income, elderly and disabled citizens.

Policy 5.6.2. Increase funding for coordinated transportation systems for the transportation disadvantaged.

Policy 5.6.3. The Council and/or the Metropolitan Transportation Organization for the Gainesville Urbanized Area should provide technical assistance to designated north central Florida local transportation coordinating boards and community transportation coordinators.

The Transportation Disadvantaged Service Plan is consistent, to the maximum extent feasible, with the Strategic Regional Policy Plan.

c. Transit Development Plans

Not applicable.

d. Florida Commission for the Transportation Disadvantaged 5-Year/20-Year Plan

The Florida Commission for the Transportation Disadvantaged 2005 5/20-Year Plan establishes goals, objectives and a plan of action for the Florida Commission for the Transportation Disadvantaged. The plan presents forecasts of demand for transportation disadvantaged services, the cost of meeting the forecasted demand, forecasts of future funding for transportation disadvantaged services and approaches to balancing the supply and demand for these services. The plan also provides forecasts of the transportation disadvantaged population, demand for trips, number of trips supplied, unmet demand for trips and operating expenses.

The Levy County Transportation Disadvantaged Service Plan is consistent, to the maximum extent feasible, with the Florida Commission for the Transportation Disadvantaged 2005 5/20-Year Plan.

e. Metropolitan Planning Organization Long-Range Transportation Plans

Not applicable.

f. Transportation Improvement Program

Not applicable.

5. Public Participation

The Levy County Transportation Disadvantaged Board includes representatives of public, private and non-profit transportation and human services providers as well as the public to participate in the development and update of the Levy County Transportation Disadvantaged Service Plan. The Transportation Disadvantaged Service Plan is developed through input of the Levy County Transportation Disadvantaged Board whose membership includes citizens and human service providers.

6. Levy County Transportation Disadvantaged Coordinating Board Membership Certification

**LEVY COUNTY
TRANSPORTATION DISADVANTAGED COORDINATING BOARD
MEMBERSHIP CERTIFICATION**

Name: North Central Florida Regional Planning Council
 Address: 2009 N.W. 67th Place
Gainesville, Florida 32653-1603

The Designated Official Planning Agency named above hereby certifies to the following:

1. The membership of the Local Coordinating Board, established pursuant to Rule 41-2.012(3), Florida Administrative Code, does in fact represent the appropriate parties as identified in the following list; and
2. The membership represents, to the maximum extent feasible, a cross section of the local community.

Signature: _____ Date: _____
 Charles S. Chestnut IV, Chair

REPRESENTATION	MEMBER	ALTERNATE	TERM ENDING
Local Elected Official/Chair	Commissioner Meeks		No Term
Elderly	Vacant	Vacant	6/30/2023
Disabled	Vacant	Vacant	6/30/2021
Citizen Advocate	Renate Cannon	Vacant	6/30/2021
Citizen Advocate/User	Tammy Jean Ippolito	Vacant	6/30/2021
Children at Risk	Sandra Woodard	Brooke Ward	6/30/2022
Florida Association for Community Action	Tiffany McKenzie	Charles Harris, Jr.	6/30/2023
Public Education	Gary Masters	Joseph Wain	No Term
Florida Department of Transportation	Sandra Collins	Lauren Adams	No Term
Florida Department of Children and Families	John Wisker	Amy Burton	No Term
Florida Department of Elder Affairs	Matthew Pearson	Vacant	No Term
Florida Department of Education	Jeff Aboumrad	Peter Shenis	No Term
Florida Agency for Health Care Administration	Dewece Ogden	Vacant	No Term
Regional Workforce Development Board	Cindy LeCouris	Dale French	No Term
Veteran Services	Robert E. Lowms	Julie E. Rose	6/30/2023
Local Mass Transit	Not Applicable	Not Applicable	No Term
Private Transportation Industry	Vacant	Vacant	6/30/2022
Local Medical Community	Vacant	Vacant	6/30/2022

7. Levy County Transportation Disadvantaged Coordinating Board Membership

LEVY COUNTY TRANSPORTATION DISADVANTAGED COORDINATING BOARD

MEMBER/REPRESENTING	ALTERNATE/REPRESENTING
Commissioner John Meeks Local Elected Official/Chair	Not applicable
Sandra Collins Florida Department of Transportation Grievance/Annual Evaluation Committee Member	Lauren Adams Florida Department of Transportation
John Wisker Florida Department of Children and Families Grievance/Annual Evaluation Committee Member	Amy Burton Florida Department of Children and Families
Jeff Aboumrاد Florida Department of Education	Peter Shepis Florida Department of Education
Matthew Pearson Florida Department of Elder Affairs Annual Evaluation Committee Member	Vacant Florida Department of Elder Affairs
Dewece Ogden Florida Agency for Health Care Administration Grievance/Annual Evaluation Committee Member	Pamela Hagley Florida Agency for Health Care Administration
Sheryl Dick-Stanford Florida Agency for Persons with Disabilities	Sylvia Bamburg Florida Agency for Persons with Disabilities
Larry Trowbridge Regional Workforce Board	Cindy LeCouris Regional Workforce Board
Tiffany McKenzie Central Florida Community Action Agency, Inc. Term ending June 30, 2023	Charles J. Harris, Jr. Central Florida Community Action Agency, Inc. Term ending June 30, 2023
Gary Masters Public Education Community Grievance Committee Member	Joseph Wain Public Education Community
Robert E. Lowans Veterans Grievance/Annual Evaluation Committee Member Term ending June 30, 2023	Julie E. Rose Veterans Term ending June 30, 2023
Renate M. Cannon, Vice-Chair Citizen Advocate Term ending June 30, 2021	Vacant Citizen Advocate Term ending June 30, 2021
Tammy Jean Ippolito Citizen Advocate - User Term ending June 30, 2021	Vacant Citizen Advocate - User Term ending June 30, 2021
Vacant Persons with Disabilities Annual Evaluation Committee Member Term ending June 30, 2021	Vacant Persons with Disabilities Term ending June 30, 2021
Vacant Elderly Term ending June 30, 2023	Vacant Elderly Term ending June 30, 2023
Vacant Medical Community Term ending June 30, 20122	Vacant Medical Community Term ending June 30, 2022
Sandra Woodard Children at Risk Term ending June 30, 2022	Brooke Ward Children at Risk Term ending June 30, 2022
Vacant Private Transit Term ending June 30, 2022	Vacant Private Transit Term ending June 30, 2022

B. Service Area Profile and Demographics

1. Levy County Service Area Description

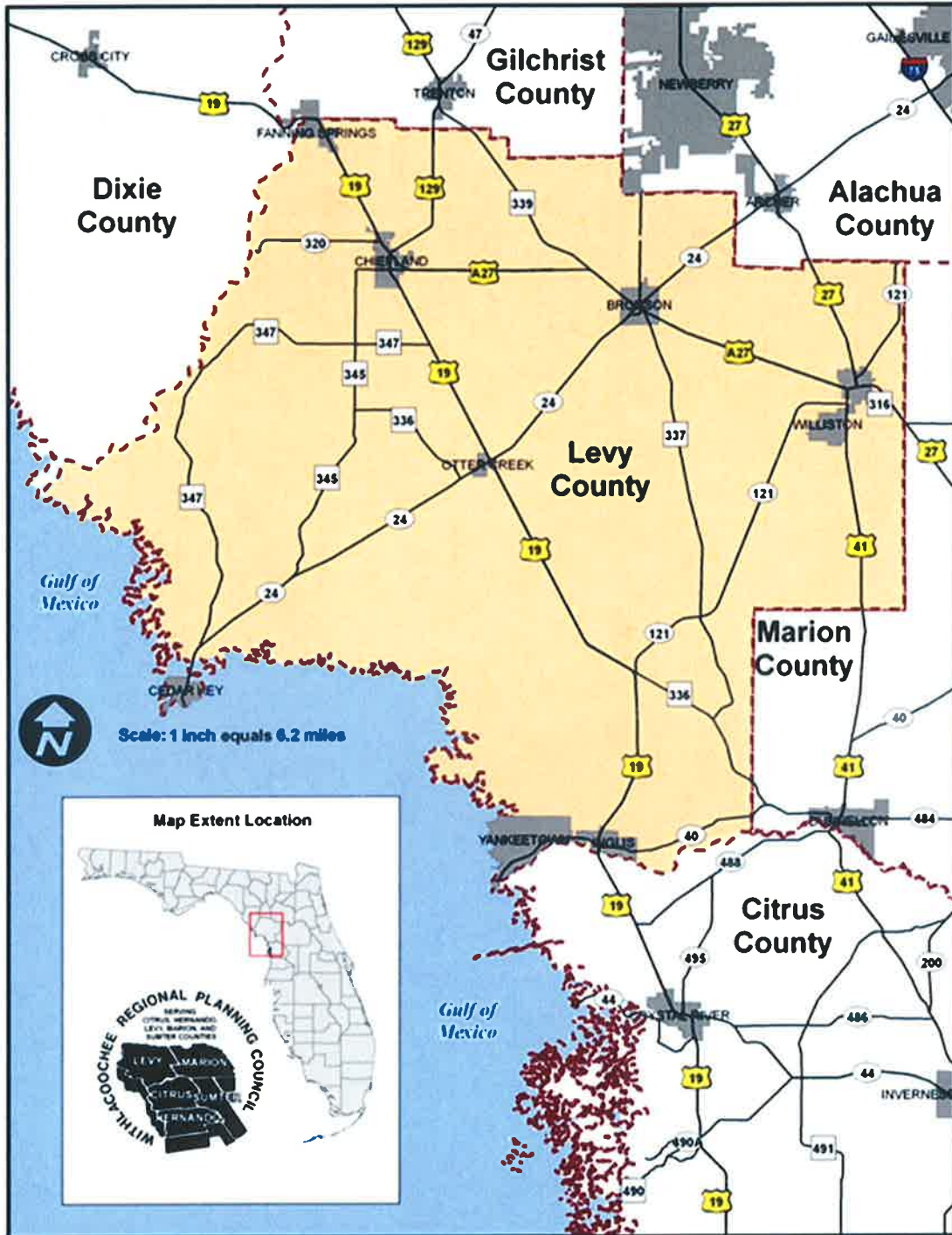
Levy County has a land area of 1,118 square miles and is surrounded by Dixie County, Gilchrist County and Alachua County to the north, Marion County to the east, Citrus County to the south and the Gulf of Mexico to the west. The county has eight incorporated areas including Bronson, Cedar Key, Chiefland, Inglis, Otter Creek, Williston, Yankeetown and a part of Fanning Springs. It also has numerous unincorporated named communities including Fowler's Bluff, Camp Azalea, Rosewood, Gulf Hammock, Morriston, Montbrook and Raleigh. Map 1 shows Levy County's location in relation to the other counties in the state. Map 2 shows the locations of the county's cities, towns and Census Divisions (Cedar Key-Yankeetown, Chiefland and Williston-Bronson).

2. Demographics

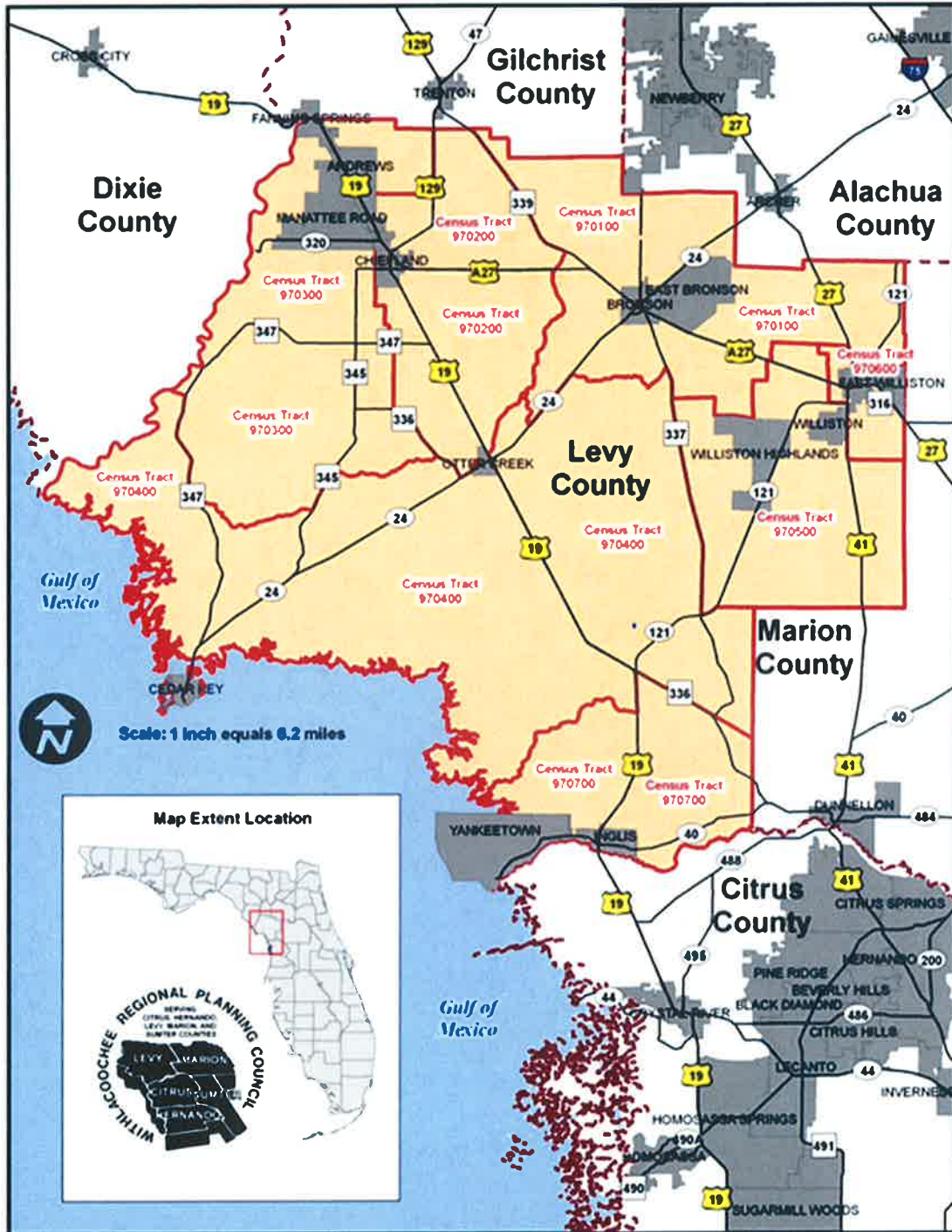
a. Land Use

The purpose of this section is to provide information concerning Levy County's existing land use. This information was obtained from Levy County's Comprehensive Plan. As indicated in the Future Land Use Map (see map 3), the major existing land uses in the County are agriculture, forestry and conservation. Less than 5 percent of the County's land area is in residential use. There are population concentrations in numerous incorporated areas and unincorporated named communities dispersed across the county. The dominant trend in recent years, however, has been sparse development on inexpensive lots out in the county. That trend is expected to continue unless certain population magnets, such as heavy industry, appear. Very little industry has been established anywhere in the county to date.

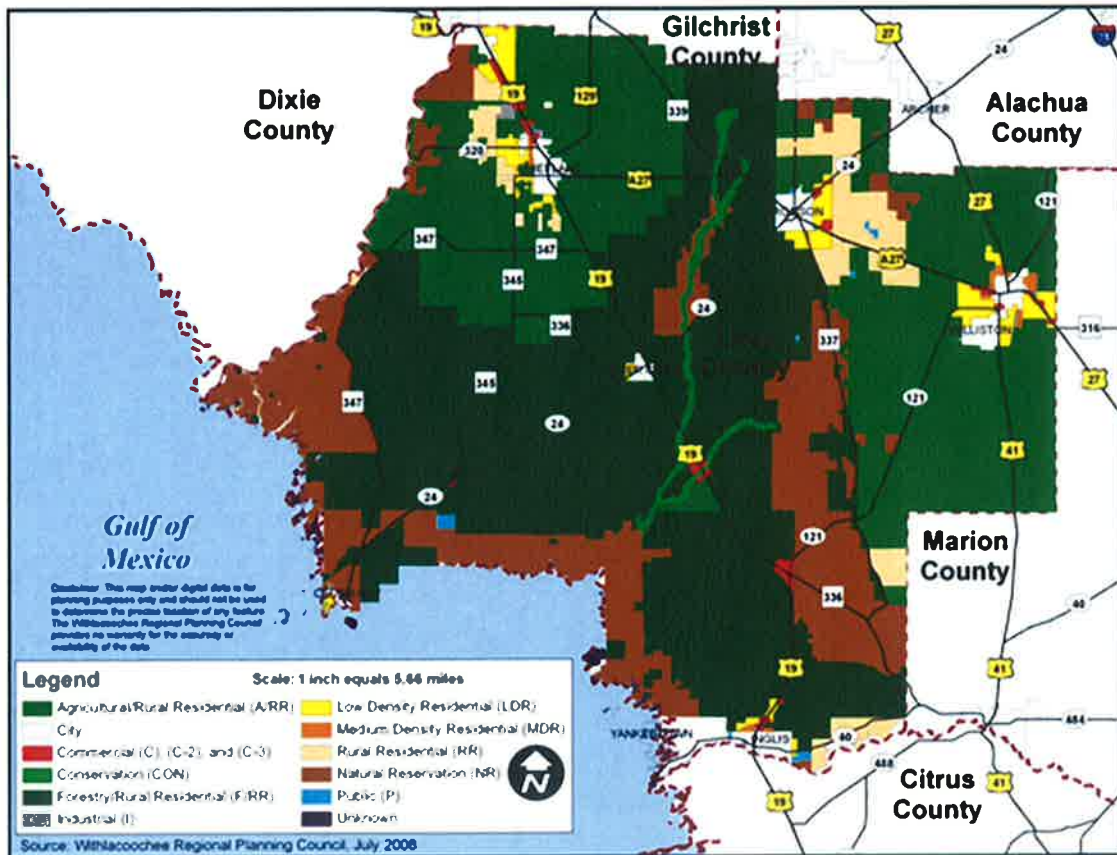
LEVY COUNTY WITHIN THE STATE OF FLORIDA



LEVY COUNTY CENSUS DIVISIONS, CITIES AND CENSUS DESIGNATED PLACE



LEVY COUNTY FUTURE LAND USE



b. Population/Composition

According to the 2010 US Census Bureau, Levy County's 2010 population was 40,801. The Bureau of Economic and Business Research estimates Levy County's 2018 total population as 41,699. Table 1 shows, the population of Levy County.

TABLE 1
Population Counts and Estimates
Levy County

AREA	POPULATION COUNT 2010 Census	POPULATION ESTIMATES 2020
Levy County	40,801	41,699
Bronson	1,113	1,181
Cedar Key	702	726
Chiefland	2,245	2,217
Fanning Springs	278	517
Inglis	1,325	1,305
Otter Creek	134	118
Williston	2,768	2,906
Yankee Town	502	509
Unincorporated Area	31,526	32,220

Sources: 2010 Bureau of the Census/Bureau of Economic and Business Research, University of Florida

c. Population Densities

Table 2 shows with approximately 1,118 square miles of land area, the County population density in 2010 was approximately 36.5 persons per square mile.

TABLE 2
Population Density
Levy County

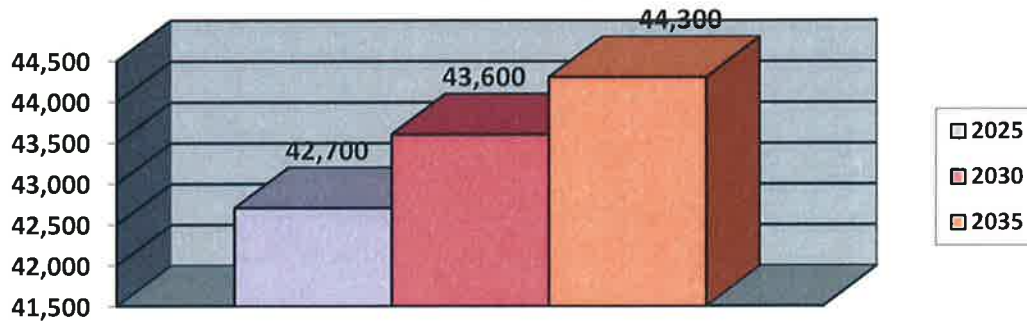
2010 U.S. CENSUS POPULATION	SQUARE MILES	PERSONS PER SQUARE MILE
40,801	1,118	36.5

Source: U.S. Census Bureau: 2010 State and County Quick Facts

d. Population Projections

According to the Bureau of Economic and Business Research, it is estimated that Levy County will have a total population of 42,700 by the year 2025, and by 2035, the total County population will be 44,300. Illustration I shows population projections for 2025, 2030 and 2035.

ILLUSTRATION I
Population Projections
Levy County



Source: Bureau of Economic and Business Research, University of Florida

e. Population Age Distribution

Population age distribution is useful in determining mobility needs which transit might meet. The elderly typically are less likely to have access to a vehicle and thus are more dependent on the transit system for their travel needs. Table 3 shows estimates of the County's population by age group. The 25-44 year-old age group is the largest age group within the County. The 65 and over population is the smallest age group within the County, comprising 13 percent of the population.

TABLE 3
Population Estimates By Age Group
Levy County

Age Group	Estimated 2019 Population
0-4	2,231
5-17	5,865
18-24	2,939
25-54	13,858
55-64	6,772
65-79	7,637
80+	2,028

Source: Bureau of Economic and Business Research, University of Florida

f. Disability and Self Care Limitations

According to the 2010 Bureau of the Census 2013-2017 American Community Survey, 7,895 civilian non-institutionalized Levy County residents have disabilities.

g. Employment

According to the U.S. Department of Labor, Bureau of Labor Statistics, the estimated labor force in December 2020 was 16,581. The estimated unemployment rate for LevyCounty in December 2020 was 5.1 percent.

h. Income

According to the 2010 Bureau of the Census, the per capita income for Levy County in 2018 was \$22,025. The percent of persons below poverty level in 2018 was 16 %. Table 4 shows per capita income and the percentage of persons below poverty level. Table 5 shows income levels that are currently used to define the federal poverty level. Low-income households often have no mobility choice other than public transportation and thus generally have high potential for transit use.

TABLE 4
Income and Poverty Status
Levy County

Per Capita Income In 2018	Percentage Of Persons Below Poverty Level 2018
\$22,025	16%

Source: Bureau of the Census 2010, State and County Quick Facts

TABLE 5
2021 Poverty Guidelines For The 48 Contiguous States
And The District of Columbia

Persons In Family/Household	202123 Poverty Guideline
1	\$12,880
2	\$17,420
3	\$21,960
4	\$26,500
5	\$31,040
6	\$35,580
7	\$40,120
8	\$44,660

* For families/households with more than 8 persons, add \$5,680 for each additional person.

Source: U.S. Department of Health and Human Services, Office of the Assistant Secretary for Planning and Evaluation

According to the Florida Agency for Health Care Administration, Medicaid Data Analytics, the total Medicaid eligibles for Levy County as of January 31, 2021 was 1,912. Table 6 shows individuals who received Supplemental Security Income

TABLE 6
Supplemental Security Income
Levy County
2019

Type Of Assistance	Recipients
Aged	102
Blind and Disabled	1,355

Source: Social Security Administration, Office of Retirement and Disability Policy, Office of Research and Statistics, SSI Recipients by State and County, 2019

i. Housing

The 2010 Bureau of the Census estimates that in 2018, the total number of households in Levy County was 16,433 and that the average household size was 2.41. Table 7 presents data on housing units below poverty level.

TABLE 7
Housing Units
Levy County
2018

Housing Units	Percent of Persons Below the Poverty Level	Owner Occupied Housing Unit Rate	Median Value of Owner Occupied Housing Units
20,661	16%	77.2%	\$99,400

Source: 2010 Bureau of the Census Quick Facts

j. Health

There is one assisted living facility located in Levy County, the Good Samaritan Retirement Home. According to the Florida Health 2019/20 Physician Workforce Annual Report, there were 15 licensed doctors of medicine practicing in Levy County.

k. Transportation

According to the 2010 Census 2014-2018 American Community Survey, an estimated 846 households in Levy County had no vehicle available in 2018.

I. Major Trip Generators/Attractors

Trip generators are land uses from which trips originate (e.g., residential developments) while trip attractors are land uses which are destinations (e.g., shopping districts, employment centers, medical offices, educational facilities and recreation sites). Examples of trip attractors located in Levy County include the Wal-Mart Supercenter in Chiefland, the industrial parks in Williston and Chiefland, Regional Hospital in Williston, the satellite campus of Central Florida Community College in Chiefland, Manatee Springs State Park, and the County Courthouse in Bronson. Levy County's ten largest private sector employers include: Wal-Mart Supercenter, Winn-Dixie, Central Florida Electric Co-op, Regional General Hospital Williston, J.E. Whitehurst & Sons, Drummond Community Bank and Capital City Bank.

Although access to retail stores and services in the County is increasing, travel to out-of-county destinations continues to be necessary for many Levy County residents, particularly for employment and medical purposes. Major trip generators/attractors include: Lancaster Correctional in Gilchrist County, Cross City Correctional in Dixie County, Shands Hospital in Alachua County, VA Medical Center in Alachua County and the University of Florida in Alachua County.

Travel to Gainesville continues to be necessary for many County residents, particularly for employment and medical purposes. Approximately 15 percent of Levy County's employed residents work in Alachua County.

C. Service Analysis

1. General and Critical Need Transportation Disadvantaged Populations

The National Center for Transit Research Center for Urban Transportation Research developed a methodology for estimating the general and critical need Transportation Disadvantaged population based on the most current U.S. Census Bureau demographic and socio-economic data available. The general Transportation Disadvantaged population includes the estimates of all disabled, elderly, low income persons and children who are "high-risk" or "at-risk." The critical need Transportation Disadvantaged population includes individuals who, due to severe physical limitations or low incomes, are unable to transport themselves or purchase transportation and are dependent upon others to obtain access to health care, employment, education, shopping, social activities, or other life sustaining activities.

The following tables show general and critical need Transportation Disadvantaged population estimates for Levy County.

CALCULATION OF GENERAL TRANSPORTATION DISADVANTAGED POPULATION

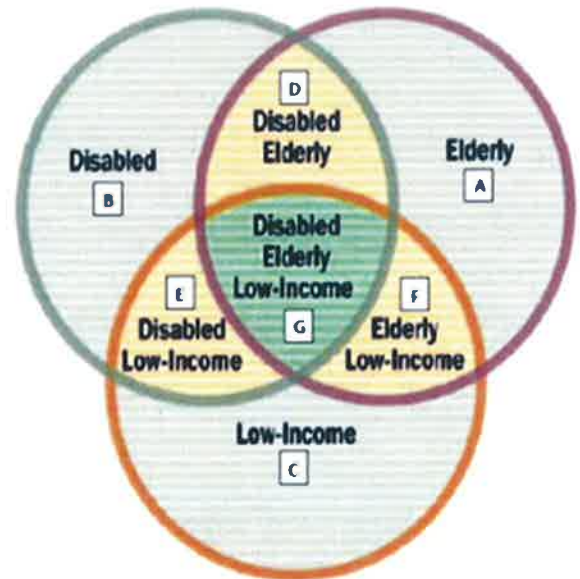
Levy County

Census Data from 2018

County Pop. By Age	Total Pop by Age	% of Total Pop	Population Below Poverty Level by Age	% of Total Pop Below Poverty Level by Age	Total Population with a Disability by Age	% of Total Pop with a Disability by Age	Total Pop with Disability and Below Poverty Level by Age	% Total Pop with a Disability and Below Poverty Level by Age
< 5 Years of Age	2,069	5.5%	792	2.1%	61	0.7%	0	0.00%
5-17	6,629	17.7%	1,656	4.4%	390	1.0%	72	0.19%
18-34	6,417	17.1%	1,911	5.1%	361	1.0%	183	0.49%
35-64	12,294	32.8%	2,097	5.6%	3,765	10.0%	1,013	2.70%
Total Non Elderly	27,409	73.1%	6,456	17.2%	4,577	12.2%	1,268	3.38%
65-74	5,972	15.9%	299	0.8%	1,920	5.1%	350	0.93%
75+	4,131	11.0%	140	0.4%	1,962	5.2%	147	0.39%
Total Elderly	10,103	26.9%	439	1.2%	3,882	10.3%	497	1.32%
Total	37,512	100%	6,895	18.4%	8,459	22.6%	1,765	4.71%

Double Counts Calculations		
E - Estimate non-elderly/disabled/ low income	From Base Data (I11)	1,268
B - Estimate non-elderly/ disabled/not low income	Subtract I11 from G11	3,309
G - Estimate elderly/disabled/low income	From Base Data (I14)	497
D- Estimate elderly/ disabled/not low income	Subtract I14 from G14	3,385
F - Estimate elderly/non-disabled/low income	Subtract I14 from E14	(58)
A - Estimate elderly/non-disabled/not low income	Subtract sum of J17, J18 and J19 from C14	6,279
C - Estimate low income/not elderly/not disabled	Subtract I11 from E11	5,188
Total - Non-Duplicated		19,868

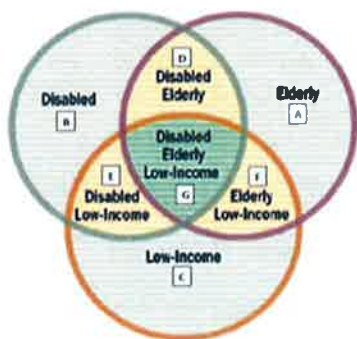
General TD Population	% of Total	
Non-Duplicated General TD Population Estimate	19,868	53.0%



FORECAST OF GENERAL AND CRITICAL NEED TRANSPORTATION DISADVANTAGED POPULATIONS

Levy County

General TD Population Forecast	2018	2019	2020	2021	2022	2023	2024	2025	2026	2027	2028
<i>Overlapping Circle Component</i>											
E - Estimate non-elderly/disabled/low income	1,268	1,275	1,281	1,288	1,294	1,301	1,308	1,315	1,321	1,328	1,335
B - Estimate non-elderly/disabled/not low income	3,309	3,326	3,343	3,361	3,378	3,395	3,413	3,430	3,448	3,466	3,484
G - Estimate elderly/disabled/low income	497	500	502	505	507	510	513	515	518	521	523
D - Estimate elderly/disabled/not low income	3,385	3,402	3,420	3,438	3,455	3,473	3,491	3,509	3,527	3,546	3,564
F - Estimate elderly/non-disabled/low income	-58	-58	-59	-59	-59	-60	-60	-60	-60	-61	-61
A - Estimate elderly/non-disabled/not low income	6,279	6,311	6,344	6,377	6,410	6,443	6,476	6,510	6,543	6,577	6,611
C - Estimate low income/not elderly/not disabled	5,188	5,215	5,242	5,269	5,296	5,323	5,351	5,378	5,406	5,434	5,462
TOTAL GENERAL TD POPULATION	19,868	19,971	20,074	20,177	20,282	20,388	20,492	20,597	20,704	20,811	20,918
TOTAL POPULATION	37,512	37,708	37,900	38,096	38,293	38,491	38,689	38,889	39,090	39,292	39,495



Levy County

Critical Need TD Population Forecast	2018	2019	2020	2021	2022	2023	2024	2025	2026	2027	2028
Total Critical TD Population											
<i>Disabled</i>	1,997	2,007	2,017	2,028	2,038	2,049	2,059	2,070	2,081	2,092	2,102
<i>Low Income Not Disabled No Auto/Trans#</i>	1,395	1,403	1,410	1,417	1,424	1,432	1,439	1,447	1,454	1,462	1,469
Total Critical Need TD Population	3,392	3,410	3,427	3,445	3,463	3,481	3,499	3,517	3,535	3,553	3,571
Daily Trips - Critical Need TD Population											
<i>Severely Disabled</i>	98	98	99	99	100	100	101	101	102	102	103
<i>Low Income - Not Disabled - No Access</i>	2,650	2,663	2,677	2,691	2,705	2,719	2,733	2,747	2,761	2,776	2,790
Total Daily Trips Critical Need TD Population	2,748	2,794	2,841	2,889	2,938	2,990	3,043	3,097	3,152	3,208	3,258
Annual Trips	714,384	726,457	738,734	751,219	763,914	777,436	791,196	805,200	819,453	833,957	847,050

2. Paratransit Service Demand Estimation

The National Center for Transit Research Center for Urban Transportation Research developed a paratransit service demand estimation tool based on the most current U.S. Census Bureau demographic and socio-economic data available. The following table shows trip demand for the critical Transportation Disadvantaged population.

CALCULATION OF CRITICAL NEED TRANSPORTATION DISADVANTAGED POPULATION

Levy County					Census Data from:	2018
County Pop. By Age	Total Population with a Disability by Age	% with a Severe Disability by Age	Total Population with a Severe Disability by Age	% of Total Pop with Severe Disability by Age	% of Severe Disability Below Poverty Level	Total Severe Disability Below Poverty Level
< 5 Years of Age	61	4.20%	3	0		
5-17	390	4.20%	16	0.25%		
18-34	361	6.30%	23	0.35%		
35-64	3,765	13.84%	521	4.24%		
Total Non Elderly	4,577		563	2.05%	28.60%	161
65-74	1,920	27.12%	521	8.72%		
75+	1,962	46.55%	913	22.11%		
Total Elderly	3,882		1,434	14.19%	11.70%	168
Total	8,459		1,997	5.32%	28.60%	329

Critical Need - Severely Disabled TD Population			
	Not Low Income	Low Income	Totals
<i>Non-Elderly</i>	402	161	563
<i>Elderly</i>	1,266	168	1,434
TOTAL	1,668	329	1,997

TRIP RATES USED	
<i>Low Income Non Disabled Trip Rate</i>	
Total	2.400
<i>Less</i>	
Transit	0.389
School Bus	0.063
Special Transit	0.049
	1.899
<i>Severely Disabled Trip Rate</i>	
Special Transit	0.049

Low Income & Not Disabled = C + F			
<i>Assumes</i>	5,130	CALCULATION OF DAILY TRIPS FOR THE CRITICAL NEED TD POPULATION	
27.2%	xx % without auto access		
	1,395		
100.0%	xx % without transit access	1,395	
			Calculation of Daily Trips
Total Actual Critical TD Population		Daily Trip Rates	Total
<i>Severely Disabled</i>	1,997	0.049	98
<i>Low Income ND</i>	###	1.899	2,650
Totals			2,748

3. Barriers to Coordination

Medicaid non-emergency transportation services are no longer coordinated through Florida’s Coordinated Transportation System in Levy County. In May 2014, the Florida Agency for Health Care Administration implemented Florida’s Managed Medical Care Program. The Managed Medical Care Program requires Managed Medical Assistance Plans to provide transportation to their enrollees who have no other means of transportation available.

The Managed Medical Assistance Plans provide transportation services directly through their own network of transportation providers. According Chapter 2 of the Florida Agency for Health Care Administration Transportation Coverage, Limitations and Reimbursement Handbook, July 1997, “Medicaid is required by Chapter 427, Florida Statutes to purchase transportation services through the designated Community Transportation Coordinator, unless those services are not cost effective or the Community Transportation Coordinator does not coordinate Medicaid transportation services.”

Other barriers to the coordination of transportation services in Levy County include the following:

- low density, rural population limits the ability to multi-load vehicles;
- out-of-county trips are required due to the limited availability of medical services/facilities; and
- various requirements for agency client transportation services.

4. Needs Assessment

United States Code Section 5311 Grant Program

APPLICANT	PROJECT	PROJECT YEAR	PROJECT LOCATION	ESTIMATED PROJECT COST	PROJECT FUNDING SOURCE
Levy County Board of County Commissioners	Provide existing and new service not subsidized by other transportation revenue sources.	2021/22	Levy County	\$387,500.00 \$387,500.00	United States Code Section 5311 Levy County Board of County Commissioners

United States Code Section 5339 Grant Program

APPLICANT	PROJECT	PROJECT YEAR	PROJECT LOCATION	ESTIMATED PROJECT COST	PROJECT FUNDING SOURCE
Levy County Board of County Commissioners	Purchase one replacement vehicle	2020/2021	Levy County	\$87,675.00	United States Code Section 5339

Transportation Disadvantaged Trip & Equipment Grant Program

APPLICANT	PROJECT	PROJECT YEAR	PROJECT LOCATION	ESTIMATED PROJECT COST	PROJECT FUNDING SOURCE
Levy County Board of County Commissioners	Provide trips to transportation disadvantaged individuals.	2020/21	Levy County	\$413,839.00 \$ 45,982.00	Transportation Disadvantaged Trust Fund Levy County Board of County Commissioners

Rural Area Capital Assistance Program

APPLICANT	PROJECT	PROJECT YEAR	LOCATION	ESTIMATED COST	FUNDING SOURCE
Levy County Board of County Commissioners	Purchase one replacement vehicle	2021/22	Levy County	\$91,515.00	Rural Area Capital Assistance Program Grant

5. Goals and Objectives

GOAL 1 Ensure the availability of transportation services to meet the needs of the transportation disadvantaged.

Objective 1.1 Identify the demand for transportation services.

Objective 1.2 Provide services to meet as much of the demand for transportation services among the transportation disadvantaged as possible within available resources.

Objective 1.3 Employ measures, as needed and appropriate, for controlling the rate at which funding available for non-sponsored trips is expended and for targeting funding available for non-sponsored trips to individuals with the greatest need.

Objective 1.4 Monitor and maximize the availability of local, state and federal government funding for transportation services for the transportation disadvantaged.

Objective 1.5 Identify and pursue potential sources of additional funding for transportation services and partnership opportunities. Seek, in particular, to stimulate or facilitate the use of private funding to reduce reliance on public subsidies.

Objective 1.6 Eliminate physical barriers to the use of transportation services by ensuring compliance with the Americans with Disabilities Act.

Objective 1.7 Monitor land use/development patterns to inform decision-making regarding service delivery and the allocation of resources.

Objective 1.8 Participate in local, regional and state transportation and comprehensive planning processes to ensure that transportation disadvantaged issues are considered.

Objective 1.9 Monitor changes in the health care and other service systems used by the transportation disadvantaged to identify potential impacts on the County's coordinated transportation system.

GOAL 2 Ensure that transportation services are provided in the most effective and efficient manner possible.

Objective 2.1 Coordinate transportation resources for the transportation disadvantaged available in or planned for the service area to the maximum extent possible.

Objective 2.2 Maximize the use of existing transportation resources to meet the demand for transportation services among the transportation disadvantaged.

Objective 2.3 Maximize the use of measures that promote effective and efficient service delivery without unduly inconveniencing riders.

Objective 2.4 Pursue coordination efforts with other Community Transportation Coordinators as appropriate for the purposes of reducing costs, increasing transportation services available and facilitating the provision of inter county trips.

GOAL 3 Ensure that quality transportation services are provided.

Objective 3.1 Ensure transportation services are provided in a safe, reliable and courteous manner.

Objective 3.2 Monitor and evaluate the performance of the Community Transportation Coordinator.

Objective 3.3 Provide processes for addressing service complaints and formal grievances on transportation-related matters.

GOAL 4 Ensure program accountability.

Objective 4.1 Comply with the requirements of Chapter 427, Florida Statutes, and Rule Chapter 41-2, Florida Administrative Code.

Objective 4.2 Prepare plans, contracts, reports and other documents required by Chapter 427, Florida Statutes, and Rule Chapter 41-2, Florida Administrative Code.

GOAL 5 Increase public awareness of and involvement in the transportation disadvantaged program.

Objective 5.1 Undertake marketing and outreach activities to increase public awareness of and involvement in Florida's Transportation Disadvantaged Program. Project a consumer-oriented, customer service image.

Objective 5.2 Conduct at least one public workshop a year to allow individuals, agencies, organizations and others a formal opportunity to provide input on matters relating to local transportation services for the transportation disadvantaged.

GOAL 6 Provide affordable transportation services to low-income persons.

- Objective 7.1** Develop transportation services for daily living activities.
- Objective 7.2** Research the feasibility of providing deviated fixed route service that provides service within Levy County.
- Objective 7.3** Advertise the available transportation services once a year.

GOAL 7 Increase transportation services provided in Levy County.

- Objective 7.1** Annually research local, state, and federal funding opportunities to increase services available to the transportation disadvantaged population in Levy County.
- Objective 7.2** Annually identify projects that can be funded under the Federal Transit Administration’s grant programs.

6. Implementation Plan

GOAL/STRATEGIES	RESPONSIBLE PARTY(IES)	DATE
Goal 1: Ensure the availability of transportation services to meet the needs of the transportation disadvantaged population.		
Identify and monitor demand for transportation disadvantaged services.	Community Transportation Coordinator	Ongoing
Provide services to meet as much of the demand for transportation services among the transportation disadvantaged population as possible within available resources.	Community Transportation Coordinator	Ongoing
Employ measures, as needed and appropriate, for controlling the rate at which funding available for non-sponsored trips is expended and for targeting funding available for non-sponsored trips to individuals with the greatest need.	Community Transportation Coordinator	Ongoing
Monitor and maximize the availability of local, state and federal government funding for transportation services for the transportation disadvantaged.	Community Transportation Coordinator	Ongoing
Identify and pursue potential sources of additional funding for transportation services and partnership opportunities. Seek, in particular, to stimulate or facilitate the use of private funding to reduce reliance on public subsidies.	Community Transportation Coordinator	Ongoing
Eliminate physical barriers to the use of transportation services by ensuring compliance with the Americans with Disabilities Act.	Community Transportation Coordinator	Ongoing
Participate in local, regional and state transportation and comprehensive planning processes to ensure that transportation disadvantaged issues are considered.	Community Transportation Coordinator	Ongoing
Monitor changes in the health care and other service systems used by the transportation disadvantaged to identify potential impacts on the County’s coordinated transportation system.	Community Transportation Coordinator	Ongoing

GOAL/STRATEGIES	RESPONSIBLE PARTY(IES)	DATE
Goal 2: Ensure that transportation services are provided in the most effective and efficient manner possible.		
Coordinate transportation resources for the transportation disadvantaged available in or planned for the service area to the maximum extent possible.	Community Transportation Coordinator	Ongoing
Maximize the use of existing transportation resources to meet the demand for transportation services among the transportation disadvantaged.	Community Transportation Coordinator	Ongoing
GOAL/STRATEGIES	RESPONSIBLE PARTY(IES)	DATE
Maximize the use of measures that promote effective and efficient service delivery without unduly inconveniencing riders.	Community Transportation Coordinator	Ongoing
Pursue coordination efforts with other Community Transportation Coordinators as appropriate for the purposes of reducing costs, increasing transportation services available and facilitating the provision of inter county trips.	Community Transportation Coordinator	Ongoing

GOAL/STRATEGIES	RESPONSIBLE PARTY(IES)	DATE
Goal 3: Ensure that quality transportation services are provided.		
Ensure transportation services are provided in a safe, reliable and courteous manner.	Community Transportation Coordinator	Ongoing
Monitor and evaluate the performance of the Community Transportation Coordinator.	Local Coordinating Board	Annually
Provide processes for addressing service complaints and formal grievances on transportation-related matters.	Local Coordinating Board Community Transportation Coordinator	Ongoing

GOAL/STRATEGIES	RESPONSIBLE PARTY(IES)	DATE
Goal 4: Ensure program accountability.		
Comply with the requirements of Chapter 427, Florida Statutes, and Rule Chapter 41-2, Florida Administrative Code.	Community Transportation Coordinator	Ongoing
Prepare plans, contracts, reports and other documents required by Chapter 427, Florida Statutes, and Rule Chapter 41-2, Florida Administrative Code.	Community Transportation Coordinator	Ongoing

GOAL/STRATEGIES	RESPONSIBLE PARTY(IES)	DATE
Goal 5: Increase public awareness of and involvement in Florida's Transportation Disadvantaged Program.		
Undertake marketing and outreach activities to increase public awareness of and involvement in Florida's Transportation Disadvantaged Program. Project a consumer-oriented, customer service image.	Community Transportation Coordinator	Ongoing

Conduct at least one public workshop a year to allow individuals, agencies, organizations and others a formal opportunity to provide input on matters relating to local transportation services for the transportation disadvantaged.	Local Coordinating Board	Annually
---	--------------------------	----------

GOAL/STRATEGIES	RESPONSIBLE PARTY(IES)	DATE
Goal 6: Encourage volunteers to participate in the coordinated transportation system.		
Undertake marketing and outreach activities to increase volunteering opportunities with the county's coordinated transportation system.	Community Transportation Coordinator	Ongoing

GOAL/STRATEGIES	RESPONSIBLE PARTY(IES)	DATE
Goal 7: Provide affordable transportation to low income persons.		
Develop transportation services for daily living activities.	Community Transportation Coordinator	Ongoing
Research the feasibility of providing deviated fixed route service that provides service within Levy County.	Community Transportation Coordinator	Ongoing
Advertise the available transportation services once a year.	Community Transportation Coordinator	Annually

GOAL/STRATEGIES	RESPONSIBLE PARTY(IES)	DATE
Goal 8: Increase the provision of public transportation in Levy County.		
Annually research local, state, and federal funding opportunities to increase services available to the transportation disadvantaged population in Levy County.	Community Transportation Coordinator	As needed
Annually identify projects that can be funded under the Federal Transit Administration's grant programs.	Community Transportation Coordinator	As needed

THIS PAGE LEFT BLANK INTENTIONALLY

Chapter II: Service Plan

A. Operations

The operations element is a profile of the Levy County coordinated transportation system. This element is intended to provide basic information about the daily operations of Levy County Transit and its contracted transportation operators.

1. Types, Hours and Days of Service

a. Hours and Days of Service

Transportation services provided by Levy County Transit are available from 6:00 a.m. to 6:00 p.m. Monday through Friday excluding holidays.

The ARC of Levy County (Florida Agency for Persons with Disabilities)

Weekdays (excluding holidays), door to door subscription service within Levy County to the Levy ARC facility in Otter Creek as coordinated through the Levy ARC and the Florida Department of Children and Families.

Florida's Managed Medical Care Program (Florida Agency for Health Care Administration)

Service is provided by Managed Medical Assistance Plans through a network of Transportation Management Organizations. Levy County Transit does not have contracts in place to provide service to Managed Medical Care Program clients.

Suwannee River Economic Council, Inc. (Florida Department of Elder Affairs)

Weekdays (excluding holidays) subscription trips to meal sites as coordinated through coordination contractor. Currently two sites are served; Chiefland and Williston two days per week.

Florida Commission for the Transportation Disadvantaged - Transportation Disadvantaged Program

Weekdays (excluding holidays) door to door and curb to curb reservation and demand response trips for Transportation Disadvantaged Program eligible individuals to various destinations in and out of Levy County (ambulatory and wheelchair).

Levy County Transit does not restrict the time for morning trips. However, Levy County Transit may request that no appointments be made after 2:00 p.m. in order to allow for multi-loading of passengers.

Levy County Transit does not provide medical assistance during transport or assistance with medical devices such as changing oxygen tanks. Persons requiring specialized medical assistance or emergency medical treatment must contact a local medical transportation provider or 911 for emergency medical service.

b. Holidays

Transportation services will only be provided on the following holidays for passengers travelling to dialysis and chemotherapy appointments who have no other means of transportation.

Veteran's Day
Thanksgiving
Thanksgiving Holiday (day after Thanksgiving)
Christmas Day
Christmas Holiday (day after Christmas)
New Year's Day
Martin Luther King, Jr.'s Birthday
Presidents' Day
Memorial Day
Independence Day
Labor Day
Good Friday

c. Bariatric Transportation

Levy County Transit will transport all common wheelchairs. A common wheelchair is defined as a device which does not exceed 30 inches in width and 48 inches in length measured two inches above the ground and does not weigh more than 600 pounds when occupied. Wheelchairs that exceed these dimensions and weight may not be transported.

2. Accessing Services

a. Hours of Operation

Office Hours: Riders are encouraged to make arrangements for reservation for transportation services by calling the Levy County Transit office in Bronson between 7:00 a.m. to 5:00 p.m. Monday through Friday (excluding holidays). Individuals who use the TDD system can reach Levy County Transit through the Florida Relay Service at 1.800.955.8771.

Hours of Operation: Monday through Friday, 6:00 a.m. to 6:00 p.m. (excluding holidays).

Passengers must be ready to be picked-up two (2) hours prior to their scheduled pick up time.

b. Phone Number

352.486.3485.

c. Advance Notification Time

Trip reservations must be made a minimum of three days in advance (not including weekends/holidays).

d. Trip Cancellation Process

Trips must be cancelled by calling the Levy County Transit office between 8:00 a.m. and 4:00 p.m. twenty four hours prior to the date of travel. Monday trip cancellations must be made by 4:00 p.m. the previous Friday. Callers may leave a message in the voice mail box for cancellations in the evenings and on weekends.

e. No-Show Policy

The following trips are considered no-shows:

- When the driver arrives within the passenger's scheduled pickup window and the passenger is not prepared, available or refuses to travel.
- The passenger did not cancel their trip twenty four hours in advance or before the vehicle was in route.
- When a passenger is absent or unavailable for their return trip. Passengers who can provide acceptable and verifiable evidence to Levy County Transit that the missed return trip was due to unavoidable circumstances, the missed trip will not be considered a no-show.
-

Passengers will be charged a \$10.00 fee for each verified no-show. Levy County Transit staff will call passengers to inform them of the no-show policy. Passengers charged with two no shows will be given a verbal warning of possible suspension from service. Passengers charged with three no-shows will be notified in writing that their service will be suspended for a 30-day period. Passengers will also be provided with a copy of the grievance procedures.

Passengers who no-show their initial trip will have all trips scheduled that day cancelled. Passengers who no-show their return trip must call when they are ready to be picked up. A no-show return trip will be rescheduled as a "stand by" trip. All attempts will be made to pick up "stand by" return trips within three hours of receiving the return trip request.

If a passenger can provide acceptable and verifiable evidence to Levy County Transit that their no-show trip was due to unforeseen and unavoidable circumstances, the trip will not be considered a no show.

f. After Hours Service

After hours service is not provided through the Transportation Disadvantaged Program. Calls to the Levy County Transit office between 5:00 p.m. and 7:00 a.m. Monday - Friday, weekends and holidays are received by voice mail. Calls for emergency transportation should be directed to the Levy County Emergency Medical Services office.

g. Passenger Fares

Levy County Transit charges the following passenger fares:

Transportation Disadvantaged Program - Over age 60 \$3.00 per trip, under age 60 \$3.50 per trip.

h. Transportation Disadvantaged Program Eligibility

The Levy County Transportation Disadvantaged Coordinating Board established an eligibility determination process for the provision for Transportation Disadvantaged Program sponsored trips. Applications for Transportation Disadvantaged Program eligibility must be requested from Levy County Transit. The eligibility process includes two-steps top substantiate an individual’s eligibility. Medicaid beneficiaries who are **not** travelling to a Medicaid compensable service may be eligible for Transportation Disadvantaged Program sponsored service.

Step I:

- A. Determine if the applicant has access to an operational vehicle or the ability to operate a vehicle. If the applicant has access to an operational vehicle or the ability to operate a vehicle, they must meet one of the following criteria in order to qualify for Transportation Disadvantaged Program sponsored services:
 - 1. Applicant needs transportation to and from dialysis or oncology treatments.
 - 2. Applicant uses a mobility device and is unable to transfer out of the mobility device due to a medical condition and does not have access to a lift-equipped vehicle.
- B. Determine if the applicant is eligible to receive transportation services through an agency program; is unable to purchase transportation; is unable to find transportation from other sources.

Step II:

Applicants meeting all of the above criteria must also satisfy at least one of the following:

- a. Be disabled as defined in the Americans with Disabilities Act of 1990.
- b. Be 60 years of age or older.
- c. Household income meets a maximum of 125% of the current Federal Poverty Guidelines as indicated below. Proof of income is required.

2020 Poverty Guidelines For The 48 Contiguous States And The District of Columbia

Persons In Family/Household	2020 Poverty Guideline
1	\$12,760
2	\$17,240
3	\$21,720
4	\$26,200
5	\$30,680
6	\$35,160
7	\$39,640
8	\$44,120

* For families/households with more than 8 persons, add \$4,480 for each additional person.
Source: U.S. Department of Health and Human Services, Office of the Assistant Secretary for Planning and Evaluation

Levy County Transit

Do you live in an ACLF, skilled nursing facility, retirement home, or boarding home that provides transportation? Yes No

Check below how have you traveled to your doctor's office, grocery store, etc., prior to now?

- Automobile by bus by car with friend/family other transit system
 Levy County Transit (diff funding) other- explain _____

Do you currently require mobility aids? If so check the appropriate ones.

- Manual Wheelchair Electric Wheelchair Electric Scooter
 Service Animal Walker Cane Crutches Stretcher
 other- please explain _____

Are you receiving dialysis or oncology treatment outside of home? Yes No

List days of the week: _____ Escort required? Yes No

Facility name and address _____

Physician Name: _____

Current appointment times: from _____ to _____, note that days and times may require adjusting to meet the demands and availability on the system to allow efficient scheduling.

Can you travel without assistance? Yes No

Can you ambulate (walk) without assistance? Yes No

Can you recognize destinations or landmarks? Yes No

Can you provide an address or telephone number upon request? Yes No

Can you ask for, understand and follow directions without assistance? Yes No

Can you maneuver safely in crowded area and buildings with multiple floors? Yes No

Can you handle unexpected situations and changes in your routine? Yes No

Number of persons in household: _____ **Total household income:** _____

List all persons in household start with applicant:

<u>Name</u>	<u>DOB</u>	<u>SS#</u>	<u>Income</u>
_____	_____	_____	_____
_____	_____	_____	_____
_____	_____	_____	_____
_____	_____	_____	_____

If more space is needed put on back of this page

pg. 2

A SAFE, COMFORTABLE RIDE WITH COURTEOUS SERVICE

Levy County Transit

PLEASE READ PRIOR TO COMPLETING THIS SECTION:

I understand by my signature below, that the purpose of this application is to determine if I am Eligible to travel under (TD) funding and may be asked further information. I certify that I have been truthful in answering all questions and that my answers may be verified, and I have enclosed proof of income for verification.

Signature: _____ Date _____

PLEASE READ PRIOR TO COMPLETING THIS SECTION:

If applicant is able to sign their name and only required assistance completing the application, provide the following:

PLEASE READ PRIOR TO COMPLETING THIS SECTION:

Name Phone number Relationship to applicant

Signature

If applicant is unable to complete or sign application, you must complete the section below.
If the applicant is not a minor child of yours, you must enclose evidence of your authority to sign for the applicant (Power of Attorney, Guardianship Papers, etc.)

Name Day Phone: (_____) _____

Evening Phone: (_____) _____

Address

Relationship to applicant: _____ How long: _____

I certify that, to best of my knowledge, the information given is correct.

Signature: _____ Date: _____

(Parent or Legal Guardian of Applicant)

I am the applicant's Legal Guardian and have enclosed the appropriate legal documentation.

Please review application, make sure you have completed all necessary information to the best of your ability and signed the form.

Levy County Transit has the right to refuse transport any time the driver, staff or dispatch deems it necessary for the safety of passengers, the general public, driver, or vehicle.

All services are open to the general public.

The information obtained through this application process is confidential and is only used by Levy County Transit to determine eligibility for services.

For Office use only

Approved _____ Denied _____ Reason for denial: _____ Date _____

Supervisors Initials _____ Trip Limitations: _____ Date Applicant notified: _____ # Children _____

Space type: _____ Escort: _____ PCA: _____ Other _____

pg. 3

A SAFE, COMFORTABLE RIDE WITH COURTEOUS SERVICE

i. Transportation Disadvantaged Program Trip Priorities

In order to provide a consistent, cost effective and efficient operation, Levy County Transit has adopted the following Transportation Disadvantaged Program service policies:

- a) Levy County Transit's overall policy as the designated Community Transportation Coordinator for Levy County is to group trips to the maximum extent possible and to accommodate trip requests with the least expensive service available which meets the passengers' needs.
- b) Levy County Transit will regulate expenditures to ensure a consistent level of service.
- c) Transportation Disadvantaged Program sponsored trips will be prioritized in the following order as funding permits:
 - 1. Life sustaining medical (dialysis, cancer treatment)
 - 2. Medical
 - 3. Nutritional
 - 4. Work
 - 5. Education and/or training
 - 6. Shopping
 - 7. Social/Recreational
- d) Although Levy County Transit does not restrict the time for morning trips (this allows for multi-loading of passengers), Levy County Transit requests that no appointments are made after 2:00 p.m. Levy County Transit must be responsible for economical uses of its resources in accommodating transportation services to county residents.
- e) Inter-county trips are encouraged when required services are available within the County. When this is not the case, Levy County Transit encourages multi-passenger loads to the prioritized destinations out of County shown in Map 4 General Service Area. Historically, these prioritized out of county destinations are the ones most often requested and they generally offer a wide range of services. Therefore, unless approved otherwise by the sponsoring/purchasing agency or within the limits set out below for trips to out of County trips will be to the following prioritized destinations when equivalent service can be obtained at: 1) Gainesville, 2) Crystal River/Dunnellon. Levy County Transit may require a rider to justify why she/he should be transported to destinations not in the prioritized order or to a non-prioritized destination.
- f) All or any trip pickup locations must meet Americans with Disabilities Act (ADA) wheelchair ramp specifications (no more than 1" per 1 foot slope) in order for transportation services to be provided.

LEVY COUNTY TRANSIT SERVICE AREA



3. Transportation Operators And Coordination Contractors

If needed during the July 1, 2020 to June 30, 2021 period, Levy County Transit will secure the services of an additional transportation operator(s) through: (1) negotiation or by contract, if possible, if the services are needed on very short notice, or (2) use of competitive selection process as recommended by the Levy County Transportation Disadvantaged Coordinating Board . Newspaper advertisements and mailings of notices to operators on a mailing list maintained by Levy County Transit will be used to notify operators of potential contracting opportunities. If a competitive selection process is used, the Operator Advisory Committee of the Local Coordinating Board, which makes recommendations to the Community Transportation Coordinator, will review operator submittals. The Local Coordinating Board will review and recommend approval or disapproval of transportation operator contracts.

Levy County Transit in cooperation with the Local Coordinating Board will review transportation operator contracts annually to determine whether their continuation is the most cost effective and efficient utilization possible.

Coordination contracts are appropriate for agencies/ organizations that receive transportation disadvantaged funds and are able to demonstrate it is more cost-effective and efficient from a total system perspective for them to provide some or all of their own transportation services. In negotiating each coordination contract, Levy County Transit will consider whether the contract will promote effective utilization of vehicles in the county's coordinated transportation system, comparative costs, the particular needs of the organization involved, and the intangible benefits of having the organization serve as a transportation provider.

All coordination contracts will be submitted to the Local Coordinating Board for review. In addition, Levy County Transit, in cooperation with the Local Coordinating Board will review coordination contracts annually to determine whether their continuation is the most cost-effective and efficient utilization possible.

4. Public Transit Utilization

Not applicable. There is no fixed route, public transit system operating in Levy County.

5. School Bus Utilization

There is currently no agreement between Levy County Transit and the Levy County School Board for the provision of transportation services within the coordinated transportation system using school buses. Barriers to the inclusion of the services in the system include among others, lack of air conditioning in school buses and differing safety requirements.

6. Vehicle Inventory

Levy County Transit's vehicle inventory is shown as Appendix C.

7. System Safety Program Plan Certification

Levy County Transit's System Safety Program Plan Certification is shown as Appendix D.

8. Inter-County Services

Levy County Transit will continue coordinating transportation services between Levy and Alachua Counties. Levy County Transit will also continue efforts to identify opportunities for coordinating transportation services on a regional basis and pursue those opportunities as appropriate. Levy County Transit does not have any inter-county agreements with other Community Transportation Coordinators at this time.

9. Natural Disaster/Emergency Preparedness

Coordinated Transportation System Emergency Procedures:

If an emergency, accident, mechanical breakdown, or some other incident causing delay occurs during the provision of service, Levy County Transit requires that the driver involved notify his/her supervisor as soon as possible of the situation (by two-way radio or cellular telephone when possible). Levy County Transit or the operator will then make all reasonable attempts to notify affected riders, agencies, or organizations and provide or arrange for a backup vehicle, if appropriate. Levy County Transit's System Safety Program Plan includes detailed procedures for handling emergencies, accidents, mechanical breakdowns and other delays.

Levy County Emergency Support Function Plan:

Levy County Transit is the primary agency responsible for transportation in Levy County's Emergency Support Function Plan. The Levy County Emergency Support Function Plan provides for the coordination of transportation support to state and local government entities, voluntary organizations and federal agencies requiring transportation capacity to perform disaster assistance missions following a catastrophic hurricane, significant natural disaster or other event. Levy County Transit's primary responsibilities in the event of an emergency include: 1) implement emergency related functions to include prioritization and allocation and /or tasking of all public sector transportation capacity; 2) coordinate the provisions of transportation capacity in support of disaster relief and recovery efforts; 3) act as team leader and point of contact for the Transportation Emergency Support Function at the Emergency Operations Center; 4) direct Emergency Support Function resources and personnel in support of assigned missions; 5) set up fuel supply priority for securing operation supplies during events; and 6) provide transportation as needed for special needs people.

10. Marketing

Community awareness of Levy County’s coordinated transportation system and ridership are promoted through various education and marketing efforts. These efforts include: (1) producing literature (e.g., flyers and posters) and distributing it widely in doctors' offices, county public health clinics, nursing homes and assisted living facilities, and at sites such as stores and post offices frequented by the public; 2) meeting with representatives from agencies and organizations which provide transportation services for county residents or work with individuals likely to need assistance with transportation; 3) making presentations before civic, social and other groups; 4) involving the local media (public service announcements, news releases and stories, and advertisements as funding permits); 5) having an information booth at the annual Peanut Festival in Williston and at the Levy County Health Fair; 6) requesting listings in the information pages of the local telephone book; and 7) painting or marking Levy County Transit's vans distinctively to attract attention.

11. Acceptable Alternatives

No transportation alternatives have been approved for use in Levy County under Section 427.016, Florida Statutes, and Rule 41-2.015, Florida Administrative Code.

12. Service Standards

The Community Transportation Coordinator and any transportation operator from whom service is purchased or arranged by the Community Transportation Coordinator shall adhere to Florida Commission for the Transportation Disadvantaged approved standards. These standards include:

FLORIDA COMMISSION FOR THE TRANSPORTATION DISADVANTAGED STANDARDS		
RULE 41-2 FLORIDA ADMINISTRATIVE CODE	RULE REQUIREMENT	LOCAL POLICY
<p>Drug and Alcohol Testing</p> <p>41-2.006 (4)(a)</p>	<p>Drug and alcohol testing for safety-sensitive job positions within the coordinated system regarding pre-employment, randomization, post-accident, and reasonable suspicion as required by the Federal Highway Administration and the Federal Transit Administration.</p>	<p>The Community Transportation Coordinator shall maintain and implement a drug and alcohol testing program for its safety-sensitive employees meeting the requirements of the following Federal Transit Administration regulations: 49 Code of Federal Regulations Part 655, "Prevention of Prohibited Drug Use in Transit Operations," and 49 Code of Federal Regulations Part 40, "Procedures for Transportation Workplace Drug and Alcohol Testing Programs".</p>

FLORIDA COMMISSION FOR THE TRANSPORTATION DISADVANTAGED STANDARDS		
<p>Transport of Escorts and Dependent Children</p> <p>41-2.006 (4)(b)</p>	<p>An escort of a passenger and dependent children are to be transported as locally negotiated and identified in the local Service Plan.</p>	<p>Passengers, who because of age or disability require an escort to ensure their well being, or the well being of others, shall be permitted to travel free of charge as space permits. Dependent children, defined here as children under eighteen (18) years of age, and dependent on their parents/guardian, shall be charged the regular fare for their trips and shall be accompanied by an escort and the escort shall be permitted to travel free of charge as space permits.</p>
<p>Child Restraint Devices</p> <p>41-2.006 (4) (c)</p>	<p>Use of child restraint devices shall be determined locally as to their responsibility and cost of such device in the local Service Plan.</p>	<p>The Community Transportation Coordinator shall comply with all state laws concerning the use of child restraint devices, particularly Section 316.613, Florida Statutes, Child Restraint Requirements, covering children five (5) years of age or younger. An appropriate child restraint device shall be provided by a child’s caretaker and shall be responsible for securing the device in transit vehicle. The appropriate child restraint device can include a convertible seat in vehicles equipped with such seats.</p>
<p>Passenger Property</p> <p>41-2.006 (4)(d)</p>	<p>Passenger property that can be carried by the passenger and/or driver in one trip and can be safely stowed on the vehicle shall be allowed to be transported with the passenger at no additional charge. Additional requirements may be negotiated for carrying and loading rider property beyond this amount. Passenger property does not include wheelchairs, child seats, stretchers, secured oxygen, personal assistive devices, or intravenous devices.</p>	<p>Passenger property is the soul responsibility of the passenger with the driver assisting and no thresholds will be crossed. The amount of passenger property allowed is subject to the following conditions due to limited space: (a) no more than two (2) plastic grocery bags or two (2) paper grocery bags per passenger, and (b) no more than one (1) laundry bag per passenger (plastic bag or enclosed in plastic bag).</p>

FLORIDA COMMISSION FOR THE TRANSPORTATION DISADVANTAGED STANDARDS		
<p>Vehicle Transfer Points</p> <p>41-2.006 (4)(e)</p>	<p>Vehicle transfer points shall provide for the shelter, security, and safety of passengers.</p>	<p>Any vehicle transfer points utilized within the coordinated system shall be located at sites, such as a government building or senior center that can reasonably provide for the shelter, security and safety of passengers. Vehicle transfer points do not include sites where passengers transfer from vehicle to vehicle with no wait.</p>
<p>Local Toll Free Phone Number</p> <p>41-2.006 (4)(f)</p>	<p>A local toll free phone number for complaints or grievances shall be posted inside the vehicle. The local complaint process shall be outlined as a section in the local Service Plan including, advising the dissatisfied person about the Florida Commission for the Transportation Disadvantaged Helpline as a step within the process as approved by the Local Coordinating Board.</p>	<p>A local phone number for use in reporting complaints or grievances shall be posted in all vehicles in a location visible to the passenger seating area. (All calls made within Levy County are local calls.)</p> <p>The Community Transportation Coordinator shall maintain a provision in its Complaint/Grievance Processes requiring that complainants be advised of the availability of the Florida Commission for the Transportation Disadvantaged Helpline.</p>
<p>Out-of- Service-Area Trips</p> <p>41-2.006 (4)(g)</p>	<p>Out-of-service-area trips shall be provided when determined locally and approved by the Local Coordinating Board, except in instances where local ordinances prohibit such trips.</p>	<p>Out-of-service-area trips include all trips outside of Levy County and the City of Gainesville and are limited to the Community Transportation Coordinator's general service area with medical trips having priority. Out-of-service-area trips are available subject to trip priorities, advance notification requirements/prior scheduling and any purchasing agency restrictions.</p>

FLORIDA COMMISSION FOR THE TRANSPORTATION DISADVANTAGED STANDARDS		
<p>Vehicle Cleanliness</p> <p>41-2.006 (4)(h)</p>	<p>The interior of all vehicles shall be free from dirt, grime, oil, trash, torn upholstery, damaged or broken seats, protruding metal or other objects or materials which could soil items placed in the vehicle or provide discomfort for the passenger.</p>	<p>The interiors of vehicles shall be cleaned as needed as transportation services are being provided and after each day's service to ensure they remain free of dirt, grime, oil or trash and free of damage such as torn upholstery or hazards such as broken seats that might cause discomfort or injury to a passenger. Also, the exteriors of vehicles shall be cleaned after each day's service.</p>
<p>Billing Requirements</p> <p>41-2.006 (4)(I)</p>	<p>All bills shall be paid within 7 working days to subcontractors, after receipt of said payment by the Community Transportation Coordinator, in accordance with Section 287.0585, FS.</p>	<p>Not applicable.</p>
<p>Passenger Trip Data Base</p> <p>41-2.006 (4)(j)</p>	<p>Passenger/trip data must be maintained by or accessible to the Community Transportation Coordinator on each rider being transported within the coordinated system.</p>	<p>The Community Transportation Coordinator shall maintain a computer data record on each passenger it provides or arranges transportation services for within the coordinated system including, at a minimum, the following information: name, address, phone number (if available), funding source eligibility, any special requirements and trip history. The computer data records shall be backed up with paper records held for a period of five (5) years.</p>

**FLORIDA COMMISSION FOR THE TRANSPORTATION DISADVANTAGED
 STANDARDS**

<p>Adequate Seating 41-2.006 (4)(k)</p>	<p>Adequate seating for paratransit services shall be provided to each rider and escort, child, or personal care attendant, and no more passengers than the registered passenger seating capacity shall be scheduled or transported in a vehicle at any time. For transit services provided by transit vehicles, adequate seating or standing space will be provided to each rider and escort, child, or personal care attendant, and no more passengers than the registered passenger seating or standing capacity shall be scheduled or transported in a vehicle at any time.</p>	<p>Adequate seating will be provided for each passenger and no more passengers than the registered passenger seating capacity shall be scheduled or transported in a vehicle at any time.</p>
<p>Driver Identification 41-2.006 (4)(l)</p>	<p>Drivers for paratransit services, including coordination contractors, shall be required to announce and identify themselves by name and company in a manner that is conducive to communications with the specific passenger, upon pickup of each rider, group of riders, or representative, guardian, or associate of the rider, except in situations where the driver regularly transports the rider on a recurring basis. Each driver must have photo identification that is in view of the passenger. Name patches, inscriptions or badges that affix to driver clothing are acceptable. For transit services, the driver photo identification shall be in a conspicuous location in the vehicle.</p>	<p>All drivers shall have photo identification and shall announce and identify themselves by name and agency in a manner conducive to effective communication, except in situations where the driver regularly transports the rider on a recurring basis.</p>

**FLORIDA COMMISSION FOR THE TRANSPORTATION DISADVANTAGED
STANDARDS**

<p>Passenger Assistance</p> <p>41-2.006 (4)(m)</p>	<p>The paratransit driver shall provide the passenger with boarding assistance, if necessary or requested, to the seating portion of the vehicle. The boarding assistance shall include opening the vehicle door, fastening the seat belt or utilization of wheelchair securement devices, storage of mobility assistive devices, and closing the vehicle door. In the door-through-door paratransit service category, the driver shall be required to open and close doors to buildings, except in situations in which assistance in opening/closing building doors would not be safe for passengers remaining on the vehicle. Assisted access must be in a dignified manner. Drivers may not assist a wheelchair up or down more than one step, unless it can be performed safely as determined by the passenger, guardian, and driver.</p>	<p>All drivers shall provide passengers with boarding assistance, if necessary or requested, to the seating portion of the vehicle. That assistance shall include opening the vehicle door, fastening safety belts or wheelchair securement devices, storage of mobility assistive devices, and closing the vehicle door. If necessary and the safety of other passengers will not be endangered, drivers shall open building doors for passengers. Assisted access must be in a dignified manner. Drivers may assist passengers in wheelchairs up or down one step/curb.</p>
<p>Smoking, Eating and Drinking</p> <p>41-2.006 (4)(n)</p>	<p>Smoking or any other form of tobacco use is prohibited in any vehicle. Requirements for drinking and eating on board the vehicle will be addressed in the local Service Plan.</p>	<p>Smoking or any other form of tobacco use is prohibited on all vehicles used within the coordinated system. Eating and drinking on vehicles are not permitted but exceptions are made for passengers who need to eat or drink during their trips for medical reasons.</p>

<p>Passenger No-Shows</p> <p>41-2.006 (4)(o)</p>	<p>The Community Transportation Coordinator and Local Coordinating Board shall jointly develop a policy on passenger no-shows. Assessing fines to passengers for no-shows is acceptable but such policy and process shall be identified in the local Service Plan.</p>	<p>The following trips are considered no-shows:</p> <p>When the driver arrives within the passenger’s scheduled pickup window and the passenger is not prepared, available or refuses to travel.</p> <p>The passenger did not cancel their trip twenty four hours in advance or before the vehicle was in route.</p> <p>When a passenger is absent or unavailable for their return trip. Passengers who can provide acceptable and verifiable evidence to Levy County Transit that the missed return trip was due to unavoidable circumstances, the missed trip will not be considered a no-show.</p> <p>Passengers will be charged a \$10.00 fee for each verified no-show. Levy County Transit staff will call passengers to inform them of the no-show policy. Passengers charged with two no shows will be given a verbal warning of possible suspension from service. Passengers charged with three no-shows will be notified in writing that their service will be suspended for a 30-day period. Passengers will also be provided with a copy of the grievance procedures.</p> <p>Passengers who no-show their initial trip will have all trips scheduled that day cancelled. Passengers who no-show their return trip must call when they are ready to be picked up. A no-show return trip will be rescheduled as a “stand by” trip. All attempts will be made to pick up “stand by” return trips within three hours of receiving the return trip request.</p> <p>If a passenger can provide acceptable and verifiable evidence to Levy County Transit that their no-show trip was due to unforeseen and unavoidable circumstances, the trip will not be considered a no show.</p>
---	--	--

<p>Two-Way Communications</p> <p>41-2.006 (4)(p)</p>	<p>All vehicles ordered or put into service after adoption of this section of the rule, and providing service within the coordinated system, shall be equipped with two-way communications in good working order and be audible to the driver at all times to the base. All vehicles that are not equipped with two-way communications shall have two years to be in compliance after May 1, 1996.</p>	<p>All vehicles used to provide transportation services within the coordinated transportation system shall be equipped with working two-way communication devices that provide audible communications between the driver and base at all times.</p>
<p>Air Conditioning/ Heating in Vehicles</p> <p>41-2.006 (4)(q)</p>	<p>All vehicles ordered or put into service after adoption of this section of the rule, and providing service within the coordinated system, shall have working air conditioners and heaters. Vehicles that do not have a working air conditioner or heater will be scheduled for repair or replacement as soon as possible. All vehicles that are not equipped with an air conditioner and/or heater shall have two years to be in compliance after May 1, 1996.</p>	<p>All vehicles used to provide transportation services within the coordinated transportation system shall have working air conditioners and heaters. If an air conditioner or heater fails, the vehicle will be scheduled for repair or replacement as soon as possible.</p>
<p>First Aid</p> <p>41-2.006 (4)(r)</p>	<p>First Aid policy shall be determined locally and provided in the local Service Plan.</p>	<p>All Community Transportation Coordinator employees are required to qualify in First Aid within six months of employment and remain qualified in First Aid thereafter.</p>
<p>CPR</p> <p>41-2.006 (4)(s)</p>	<p>Cardiopulmonary Resuscitation policy shall be determined locally and provided in the local Service Plan.</p>	<p>All Community Transportation Coordinator employees are required to qualify in cardiopulmonary resuscitation within six months of employment and remain qualified in cardiopulmonary resuscitation thereafter.</p>
<p>Driver Criminal Background Screening</p> <p>41-2.006(4)(t)</p>	<p>Driver background screening shall be determined locally, dependent up on purchasing agencies' requirements and provided in the local Transportation Disadvantaged Service Plan.</p>	<p>All drivers in the coordinated system must have a criminal background check with local law enforcement and the Florida Department of Law Enforcement. All drivers must also have a driving records check.</p>

<p>Fixed Route Transit Utilization 41-2.006 (4)(u)</p>	<p>In areas where fixed route transportation is available, the Community Transportation Coordinator should jointly establish with the local Coordinating Board a percentage of total trips that will be placed on the fixed route system.</p>	<p>Not applicable.</p>
<p>Pick-Up Window Rule 41-2.006 (4)(v)</p>	<p>The Community Transportation Coordinator should establish and address the passenger pick-up windows in the local Transportation Disadvantaged Service Plan. This policy should also be communicated to contracted operators, drivers, purchasing agencies and passengers.</p>	<p>Passengers must be ready to be picked-up two (2) hours prior to their scheduled pick up time.</p> <p>No-show return trips will be scheduled on a stand-by basis. Levy County Transit will attempt to schedule stand-by return trips within three hours of being requested.</p>
<p>On-Time Performance 41-2.006 (4) (w)</p>	<p>The Community Transportation Coordinator and local Coordinating Board should jointly establish and address the percentage of trips that will be on-time in the local Transportation Disadvantaged Service Plan. This performance measure should be communicated to contracted operators, drivers, purchasing agencies and passengers. This measure should also be included as part of the Community Transportation Coordinator evaluation of its contracted operators and the local Coordinating Board's evaluation of the Community Transportation Coordinator.</p>	<p>The Community Transportation Coordinator will have a 90 percent on-time performance rate for all completed trips. On-time performance will be measured by random sampling of trips.</p>
<p>Advance Reservation Requirement 41-2.006 (4) (x)</p>	<p>The Community Transportation Coordinator should establish and address in the local Transportation Disadvantaged Service Plan a minimum 24 hour advanced notification time to obtain services. This policy should be communicated to contracted operators, purchasing agencies and passengers.</p>	<p>Trip reservations must be made a minimum of three days in advance (not including weekends/holidays).</p>

<p>Safety 41-2.006 (4) (y)</p>	<p>The Community Transportation Coordinator and the local Coordinating Board should jointly establish and address in the local service plan a performance measure to evaluate the safety of the coordinated system. This measure should be used in the Community Transportation Coordinator’s evaluation of the contracted operators and the local Coordinating Board’s evaluation of the Community Transportation Coordinator.</p>	<p>There shall be no more than 1 accident per 100,000 miles during the evaluation period (July 1, 2018-June 30, 2019).</p>
<p>Reliability 41-2.006 (4) (z)</p>	<p>The Community Transportation Coordinator and the local Coordinating Board should jointly establish and address in the local service plan a performance measure to evaluate the reliability of the vehicles utilized in the coordinated system. This measure should be used in the Community Transportation Coordinator’s evaluation of the contracted operators and the local Coordinating Board’s evaluation of the Community Transportation Coordinator.</p>	<p>There shall be no more than 5 roadcalls during the evaluation period. (July 1, 2018-June 30, 2019).</p>
<p>Call Hold Time 41-2.006 (4) (aa)</p>	<p>This performance measure can be used to address the accessibility of the service. The Community Transportation Coordinator and the local Coordinating Board should jointly determine if a standard for a call hold time is needed in the coordinated system and address this in the local service plan. If determined to be necessary, this standard should be included in the local Coordinating Board’s evaluation of the Community Transportation Coordinator.</p>	<p>This standard is not applicable to this service area.</p>

<p>Quality of Service 41-2.006 (4) (bb)</p>	<p>The Community Transportation Coordinator and the local Coordinating Board should jointly establish and address in the local service plan a performance measure to evaluate the quality of service provided within the coordinated system. The measure should be used in the Community Transportation Coordinator’s evaluation of contracted operators and the local Coordinating Board’s evaluation of the Community Transportation Coordinator.</p>	<p>Collect and publicly post passenger satisfaction survey ratings. There shall be no more than one complaint per 1,000 trips during the evaluation period (July 1, 2021 - June 30, 2022).</p>
<p>Safety Belt Usage</p>	<p><u>Chapter 316.614 (4), Florida Statutes:</u> It is unlawful for any person: (a) To operate a motor vehicle in this state unless each passenger and the operator of the vehicle under the age of 18 years are restrained by a safety belt or by a child restraint device pursuant to s. 316.613, if applicable; or (b) To operate a motor vehicle in this state unless the person is restrained by a safety belt. (5) It is unlawful for any person 18 years of age or older to be a passenger in the front seat of a motor vehicle unless such person is restrained by a safety belt when the vehicle is in motion. (6)(a) Neither a person who is certified by a physician as having a medical condition that causes the use of a safety belt to be inappropriate or dangerous nor an employee of a newspaper home delivery service while in the course of his or her employment delivering newspapers on home delivery routes is required to be restrained by a safety belt.</p>	<p><u>Local Policy:</u> Passengers whose transportation is sponsored by Florida’s Transportation Disadvantaged Program shall wear a safety belt while being transported unless they are certified by a physician as having a medical condition that causes the use of a safety belt to be inappropriate or dangerous.</p>

13. Local Grievance Procedure/Process

The Transportation Disadvantaged Program Grievance Procedures are shown in Appendix A.

14. Passenger Code of Conduct

Riders and drivers are required to follow these rules of conduct to ensure everyone's safety:

- Smoking or any form of tobacco is not permitted on vehicles.
- Eating and/or drinking is not permitted on vehicles unless medically necessary.
- Passengers and drivers under the influence of alcohol or illegal drugs will not be tolerated.
- Abusive, threatening, and/or obscene language or similar actions are not permitted.
- Passengers are responsible for exact cash fare or fare ticket change will be provided.
- Operating or tampering with equipment while on board vehicles is prohibited.
- Passengers may use personal listening devices with headphones only.
- Any behavior that is disruptive to the driver or other passengers will not be tolerated.
- Passengers are not permitted to ask drivers for special treatment or make extra stops during transport.
- Passengers are not permitted to exit the vehicle during transport until they have reached their scheduled destination.

15. Community Transportation Coordinator Monitoring Procedures of Subcontractors

Not applicable.

B. Cost/Revenue Allocation and Rate Structure Justification

See Appendix B.

THIS PAGE LEFT BLANK INTENTIONALLY

Chapter III: Quality Assurance

This section contains the steps the local Coordinating Board will take to monitor and evaluate the services provided by or coordinated through the Community Transportation Coordinator, based on the Florida Commission for the Transportation Disadvantaged standards and the locally established service standards.

A. Community Transportation Coordinator Evaluation Process

The Levy County Transportation Disadvantaged Coordinating Board monitors Levy County Transit's performance as the Community Transportation Coordinator for Levy County on an ongoing basis through various means including, among others, receiving a report from Levy County Transit at each of its meetings and using or consulting with individuals who use the services available through Levy County's coordinated transportation system. The Local Coordinating Board's annual evaluation of Levy County Transit will include, at a minimum:

- Completed cost, competition and availability modules from the Florida Commission for the Transportation Disadvantaged's *Evaluation Workbook for Community Transportation Coordinators and Providers in Florida (Revised January 2010)*.
- An assessment of compliance with the Service Standards.
- An assessment of progress made in implementing the strategies and achieving the associated goals and objectives.
- Findings and recommendations, including a recommendation regarding retention of Levy County Transit as the Community Transportation Coordinator for Levy County.

The Local Coordinating Board's annual evaluation of Levy County Transit may also include a survey and other components as agreed upon by Levy County Transit, Planning Agency staff, the Local Coordinating Board and its Evaluation Committee.

THIS PAGE LEFT BLANK INTENTIONALLY

Appendix A: Levy County Transportation Disadvantaged Coordinating Board Grievance Procedures

Grievance Procedures

September 17, 2020

Levy County
Transportation Disadvantaged Coordinating Board



Levy County Transportation Disadvantaged Coordinating Board

Grievance Procedures

Approved by the
Levy County
Transportation Disadvantaged Coordinating Board

2009 NW 67th Place
Gainesville, FL 32653-1603
www.ncfrpc.org/mtpo
352.955.2000


Matt Brooks, Chair

with Assistance from



North Central Florida Regional Planning Council
2009 NW 67th Place
Gainesville, FL 32653-1603
www.ncfrpc.org
352.955.2200

September 17, 2020

Table of Contents

Chapter I: Levy County Transportation Disadvantaged Coordinating Board.....	1
Grievance Procedures	1
A. Preamble	1
B. Agency Description	1
C. Definitions	1
D. Purpose	2
E. Membership	3
F. Officers.....	3
G. Meetings.....	3
H. Administration	4
I. Duties.....	5
J. Procedures.....	5
K. Appeals	6
L. Suspension Reconsideration	7
M. Prohibition Against Retaliation	8
N. Alternative Recourse	8
O. Certification	8

Chapter I: Levy County Transportation Disadvantaged Coordinating Board Grievance Procedures

A. Preamble

The following sets forth the procedures for the Levy County Transportation Disadvantaged Coordinating Board to address grievances from agencies, users, potential users, sub-contractors, and other interested parties concerning Florida's Coordinated Transportation System.

B. Agency Description

The Levy County Transportation Disadvantaged Coordinating Board, herein after referred to as the Board, is a public body appointed by the North Central Florida Regional Planning Council serving as the Designated Official Planning Agency as authorized by Section 427.015, Florida Statutes.

C. Definitions

Transportation disadvantaged means those persons who because of physical or mental disability, income status, or age are unable to transport themselves or to purchase transportation and are, therefore, dependent upon others to obtain access to health care, employment, education, shopping, social activities, or other life-sustaining activities, or children who are handicapped or high-risk or at-risk as defined in Section 411.202, Florida Statutes.

Agency means an official, officer, commission, authority, council, committee, department, division, bureau, board, section, or any other unit or entity of the state or of a city, town, municipality, county, or other local governing body or a private nonprofit transportation service-providing agency.

Community Transportation Coordinator means a transportation entity recommended by a metropolitan planning organization, or by the appropriate designated official planning agency as provided for in Section 427.011, Florida Statutes in an area outside the purview of a metropolitan planning organization, to ensure that coordinated transportation services are provided to the transportation disadvantaged population in a designated service area.

Coordinating Board means an advisory entity in each designated service area composed of representatives appointed by the metropolitan planning organization or designated official planning agency, to provide assistance to the community transportation coordinator relative to the coordination of transportation services.

Coordination means the arrangement for the provision of transportation services to the transportation disadvantaged in a manner that is cost-effective, efficient and reduces fragmentation and duplication of services.

Levy County Transportation Disadvantaged Coordinating Board
Grievance Procedures

Designated Official Planning Agency means the official body or agency designated by the Commission to fulfill the functions of transportation disadvantaged planning in areas not covered by a Metropolitan Planning Organization. The Metropolitan Planning Organization shall serve as the designated official planning agency in areas covered by such organizations.

Designated Service Area means a geographical area recommended by a designated official planning agency, subject to approval by the Florida Commission for the Transportation Disadvantaged, which defines the community where coordinated transportation services will be provided to the transportation disadvantaged.

Florida's Coordinated Transportation System means a transportation system responsible for coordination and service provisions for the transportation disadvantaged as outlined in Chapter 427, Florida Statutes.

Grievance means a written complaint to document any concerns regarding the operation or administration of services provided by Florida's Coordinated Transportation System by the Community Transportation Coordinator, subcontracted transportation operators, the Designated Official Planning Agency, or the Board. A grievance may also be a service complaint that has been left unresolved for more than 45 days.

Memorandum of Agreement is the state contract for transportation disadvantaged services purchased with federal, state or local government transportation disadvantaged funds. This agreement is between the Florida Commission for the Transportation Disadvantaged and the Community Transportation Coordinator and recognizes the Community Transportation Coordinator as being responsible for the arrangement of the provision of transportation disadvantaged services for a designated service area.

Service complaint means routine incidents that occur on a daily basis, are reported to the driver or dispatcher, or to other individuals involved with the daily operations, and are resolved within the course of a reasonable time period suitable to the complainant. All service complaints shall be recorded and a summary of complaints should be provided by the Community Transportation Coordinator on a quarterly basis, to the Board.

Transportation Disadvantaged Service Plan means an annually updated plan jointly developed by the Designated Official Planning Agency and the Community Transportation Coordinator which contains a development plan, service plan and quality assurance components. The plan shall be approved and used by the local Coordinating Board to evaluate the Community Transportation Coordinator.

D. Purpose

- (1) The Board shall appoint a Grievance Committee to serve as a mediator to process, and investigate complaints from agencies, users, potential users of the system and the Community Transportation Coordinator in the designated service area, and make recommendations to the Board for the improvement of service.
- (2) The Board shall establish procedures to provide regular opportunities for issues to be brought before the Grievance Committee and to address them in a timely manner. Members appointed to the Grievance Committee shall be voting members of the Board.

Levy County Transportation Disadvantaged Coordinating Board
Grievance Procedures

- (3) The Grievance Committee and the Board shall have the authority to hear and advise on grievances. When an entity makes a determination of the rights, duties, privileges, benefits, or legal relationships of a specified person or persons, it is exercising "adjudicative" or "determinative" powers. Deciding a grievance between two independent parties may fall within these parameters, depending on the nature of the grievance. Chapter 427, Florida Statutes grants no adjudicative powers to anyone.

E. Membership

- (1) The Chair, subject to approval by the Board, shall appoint three (3) voting members and two (2) alternate members to a Grievance Committee. The membership of the Grievance Committee shall include broad geographic representation from members of the local Coordinating Board representing the counties in the service area.
- (2) Term limits on the Grievance Committee may coincide with term limits on the Board.

F. Officers

- (1) The Grievance Committee shall elect a Chair and Vice-Chair.

G. Meetings

- (1) The Grievance Committee may meet as often as necessary to fulfill its responsibilities. Meetings may be called, rescheduled, postponed or cancelled for any appropriate purpose by the Chair. The Grievance Committee may meet following Board meetings to hear complaints and grievances. All meetings will function under the "Government in the Sunshine Law." All meetings will provide opportunity for public comments on the agenda.
- (2) Notice of Meetings. Notices and tentative agendas shall be provided to the Florida Commission for the Transportation Disadvantaged, Committee members and other interested parties at least two weeks prior to the meeting. Meeting notices shall include the date, time, location, general nature/subject of the meeting, a contact person and phone number to call for additional information and to request accessible formats.
- (3) Quorum. At all meetings of the Grievance Committee, the presence in person of a majority of the voting members shall be necessary and sufficient to constitute a quorum for the transaction of business. In the absence of a quorum, those present may, without notice other than by announcement at the meeting, recess the meeting from time to time, until a quorum shall be present. At any such recessed meeting, any business may be transacted which might have been transacted at the meeting as originally called.
- (4) Voting. A majority vote is required for actions by the Grievance Committee. As required by Section 286.012, Florida Statutes, all Grievance Committee members, including the Chair, must vote on all official actions taken by the Grievance Committee except when there appears to be a possible conflict of interest with a member or members of the Grievance Committee.

Levy County Transportation Disadvantaged Coordinating Board
Grievance Procedures

- (5) **Voting Conflicts.** In accordance with Chapter 112.3143(2)(a), Florida Statutes, "A state public officer may not vote on any matter that the officer knows would inure to his or her special private gain or loss. Any state public officer who abstains from voting in an official capacity upon any measure that the officer knows would inure to the officer's special private gain or loss, or who votes in an official capacity on a measure that he or she knows would inure to the special private gain or loss of any principal by whom the officer is retained or to the parent organization or subsidiary of a corporate principal by which the officer is retained other than an agency as defined in s. 112.312(2); or which the officer knows would inure to the special private gain or loss of a relative or business associate of the public officer, shall make every reasonable effort to disclose the nature of his or her interest as a public record in a memorandum filed with the person responsible for recording the minutes of the meeting, who shall incorporate the memorandum in the minutes. If it is not possible for the state public officer to file a memorandum before the vote, the memorandum must be filed with the person responsible for recording the minutes of the meeting no later than 15 days after the vote."

In cases where a grievance involves the private or personal interests of a member of the Grievance Committee, such member shall be disqualified from hearing such grievance. If a Grievant claims a conflict between the Grievant and a Grievance Committee member, the Grievance Committee member identified as having a conflict shall recuse himself or herself from hearing the grievance. No member of the Grievance Committee shall appear before the Grievance Committee as an agent or attorney for any person.

- (6) **Parliamentary Procedures.** The Grievance Committee will conduct business using parliamentary procedures according to Robert's Rules of Order, except when in conflict with these Grievance Procedures.
- (7) **Public Comment.** Public comments shall be limited to three (3) minutes and directed to the Chair. Additional time may be given at the Chair's discretion. The Chair may impose a cumulative time limit for all public comment on any specific agenda item.

Members of the public shall be allowed to address the Committee following the making of a motion that has been properly seconded concerning a proposition before the Committee. Such comments shall be directed to the Chair.

All comments made by Committee members, Committee staff, guests and members of the public during any public meeting of the Grievance Committee shall be governed by the City, County and Local Government Law Section of the Florida Bar Civility Pledge, as follows:

1. We will be respectful of one another even when we disagree;
2. We will direct all comments to the issues; and
3. We will avoid personal attacks.

H. Administration

- (1) **Staff Support.** The North Central Florida Regional Planning Council shall provide the Grievance Committee with sufficient staff support and resources to enable the Grievance Committee to fulfill their responsibilities.
- (2) **Minutes.** The North Central Florida Regional Planning Council is responsible for maintaining an official set of minutes for each Grievance Committee meeting.

Levy County Transportation Disadvantaged Coordinating Board
Grievance Procedures

I. Duties

The Grievance Committee shall make recommendations to the Board, the Community Transportation Coordinator, and/or to the Florida Commission for the Transportation Disadvantaged for improvement of service.

J. Procedures

- (1) The grievance procedures shall be open to addressing concerns by any person or agency including but not limited to: purchasing agencies, users, potential users, private-for-profit operators, private-nonprofit operators, Community Transportation Coordinators, Designated Official Planning Agencies, elected officials, and drivers. The grievant, in their formal complaint, should demonstrate or establish their concerns as clearly as possible.
- (2) The Board must make a written copy of the grievance procedures available to anyone, upon request. All documents pertaining to the grievance process will be made available, upon request, in accessible format. The following procedures are established to provide regular opportunities for grievances to be brought before the Grievance Committee.
- (3) The Community Transportation Coordinator also has a process for addressing service complaints and grievances. Service complaints shall be submitted to the Community Transportation Coordinator for resolution prior to being brought to the Board's Grievance Committee.
- (4) Should an Interested party wish to file a grievance with the Board, that grievance must be filed in writing within ninety (90) days after the occurrence of the event giving rise to the grievance. The grievance shall be sent to:

Levy County Transportation Disadvantaged Coordinating Board
Grievance Committee
2009 N.W. 67th Place
Gainesville, FL 32653-1603
- (5) If requested, the North Central Florida Regional Planning Council staff will provide assistance to individuals in preparing written grievances.
- (6) The grievance should try to demonstrate or establish a clear violation of a specific law, regulation, or contractual arrangement. Copies of pertinent laws and regulations may be obtained from North Central Florida Regional Planning Council staff.
- (7) The grievance shall include:
 - a. the name, address and telephone number of the Complainant;
 - b. a statement of the grounds for the grievance and be supplemented by supporting documentation, made in a clear and concise manner; and
 - c. an explanation by the Complainant of the improvements needed to address the complaint.

Levy County Transportation Disadvantaged Coordinating Board
Grievance Procedures

- (8) If the Board receives a grievance pertaining to the operation of services by the Community Transportation Coordinator, that grievance shall be forwarded to the Community Transportation Coordinator for a written response. The Community Transportation Coordinator's written response shall be provided to the Grievance Committee at least one week prior to the Grievance Committee meeting to hear such grievance.
- (9) If the Complainant does not want to be contacted by the Community Transportation Coordinator concerning the grievance before the grievance is heard, the Community Transportation Coordinator is prohibited from contacting the Complainant.
- (10) Within fifteen (15) working days following the date of receipt of the formal grievance, North Central Florida Regional Planning Council staff shall advise the Grievance Committee of the grievance to schedule a hearing on the grievance and inform the Complainant of the hearing date.
- (11) The Grievance Committee shall meet to hear the grievance within forty-five (45) calendar days from the date of receipt of the grievance.
- (12) North Central Florida Regional Planning Council staff shall send notice of the Grievance Committee's scheduled hearing in writing to the local newspaper of greatest circulation, the Complainant and other interested parties.
- (13) All involved parties have a right to present their views to the Grievance Committee, either orally or in writing. In addition, all parties may present evidence. The Community Transportation Coordinator shall provide transportation to and from Grievance Committee meetings at no charge to complainants who cannot transport themselves to the meetings.
- (14) Any party may request a follow-up meeting of the Grievance Committee if one is needed to ensure a fair and complete hearing of a grievance. If a follow-up meeting is requested, it shall be scheduled before the meeting is adjourned. Follow-up meetings will be noticed in the same manner as regular Grievance Committee meetings.
- (15) A written report and any recommendations of the Grievance Committee shall be provided to the Board. A copy of this report shall be provided to the concerned parties within ten (10) working days after the hearing on the grievance and no more than sixty (60) calendar days from the date of receipt of the formal grievance. The Grievance Committee's recommendation will stand unless the recommendation is changed by the Board.
- (16) A written report shall also be provided to the Community Transportation Coordinator's Governing Board.
- (17) Utilization of the Board's Grievance Procedures does not preclude individuals from utilizing other processes and forums to pursue their grievances as appropriate.

K. Appeals

- (1) Appeals of recommendations by the Grievance Committee to the Board shall be made within twenty (20) working days from the date when the Grievance Committee makes a recommendation regarding a grievance. The appeal shall be mailed to:

Levy County Transportation Disadvantaged Coordinating Board
2009 N.W. 67th Place
Gainesville, FL 32653-1603

Levy County Transportation Disadvantaged Coordinating Board
Grievance Procedures

- (2) The Complainant will be notified in writing of the date, time and place of the Board meeting where the appeal will be heard. This written notice will be mailed at least ten (10) calendar days in advance of the meeting.
- (3) The Board will meet to hear the appeal and render its recommendation within thirty (30) calendar days of the date the appeal was filed. A written copy of the recommendation will be mailed to all parties involved within ten (10) calendar days of the date of the recommendation.
- (4) Should a Complainant remain dissatisfied with the Board's decision, he or she may contact the Florida Commission for the Transportation Disadvantaged at the following address:

Florida Commission for the Transportation Disadvantaged
605 Suwannee Street, MS-49
Tallahassee, FL 32399-0450
- (5) The Florida Commission for the Transportation Disadvantaged also has an Ombudsman Program to assist individuals with complaints. The toll-free Ombudsman Hotline is 1-800-983-2435. Chapter 427, Florida Statutes does not expressly confer the power or authority for the Florida Commission for the Transportation Disadvantaged to "hear and determine" a grievance between two (2) third parties. The Florida Commission for the Transportation Disadvantaged may choose to listen to grievances and it can investigate them from a fact-finding perspective. It cannot be the "judge" or "arbiter" of the grievance in the sense of determining that one party's version of the facts is right and the other is wrong, and order the wrong party to somehow compensate the right party. On the other hand, the grievance may bring to light a problem within "the system."
- (6) If the grievance showed that one (1) of the parties with whom the Florida Commission for the Transportation Disadvantaged contracts was acting so aberrantly as to not be in compliance with its contract, the Florida Commission for the Transportation Disadvantaged could exercise whatever contractual rights it has to correct the problem.
- (7) The Florida Commission for the Transportation Disadvantaged may take part in the grievance process, if it wants to, for purposes of listening to the grieving parties and gathering the facts of the matter. It may not decide the grievance, where doing so would amount to an exercise of adjudicative powers.

L. Suspension Reconsideration

- (1) If a rider has been issued a notice of suspension of service by the Community Transportation Coordinator, they have ten (10) calendar days from the date of issuance of suspension notice to request a reconsideration hearing on the suspension. If a reconsideration hearing is requested, the hearing will be held by the Grievance Committee if the suspension involves transportation provided under Florida's Transportation Disadvantaged Program.
- (2) The written request must include the name, address and telephone number of the person who is requesting the hearing and a statement as to why his or her riding privileges should not be suspended. If the request is not received within ten (10) calendar days from the issue date of the suspension, then the suspension becomes effective ten (10) calendar days from the date of issue.

**Levy County Transportation Disadvantaged Coordinating Board
Grievance Procedures**

- (3) Upon receipt of letter requesting the reconsideration hearing, a hearing shall be held within ten (10) working days. The North Central Florida Regional Planning Council will advise the person requesting the reconsideration hearing by return correspondence of the date, time and location of the hearing.
- (4) The suspended rider will be given the opportunity to present the reasons why they believe the suspension should not take place. The Grievance Committee will make a recommendation whether or not to uphold the suspension. A written statement of the recommendation shall be forwarded to the person requesting the hearing within two (2) working days after the hearing by the Grievance Committee. A written statement of the decision whether or not to uphold the suspension shall be forwarded by certified mail within two (2) working days by the Community Transportation Coordinator to the suspended rider requesting the reconsideration.

M. Prohibition Against Retaliation

The Community Transportation Coordinator shall not take any punitive action against an individual who files a grievance. No individual shall be denied Transportation Disadvantaged Program services because such individual has filed a grievance related to Florida's Transportation Disadvantaged Program or has testified or is about to testify in any such proceeding or investigation related to Florida's Transportation Disadvantaged Program.

N. Alternative Recourse

Apart from these grievance processes, aggrieved parties with proper standing may also have recourse through Chapter 120, Florida Statutes, administrative hearings process or the judicial court system.

O. Certification

The undersigned hereby certifies that he/she is the Chair of the Levy County Transportation Disadvantaged Coordinating Board and that the foregoing is a full, true and correct copy of the Grievance Procedures of this Board as adopted by the Levy County Transportation Disadvantaged Coordinating Board the 17th day of September 2020.



Matt Brooks, Chair
Levy County Transportation Disadvantaged Coordinating Board

T:\Lynn\griev\Procedures\Levy\2020 levy grievance procedures.docx

Appendix B: Cost/Revenue Allocation and Rate Structure Justification



Transportation Disadvantaged Trust Fund Service Rates Form

Community Transportation Coordinator (CTC)	Levy County Transit
Service Rate Effective Date	7/1/2020

Grant Agreement Service Rates		
Type of Service Transportation Mode	Unit of Measure	Cost Per Unit
* Ambulatory	Passenger Mile	\$1.58
* Wheel Chair	Passenger Mile	\$2.72
* Stretcher	Passenger Mile	Enter \$ Per Unit
Bus Pass – Daily	Pass	Enter \$ Per Unit
Bus Pass – Weekly	Pass	Enter \$ Per Unit
Bus Pass – Monthly	Pass	Enter \$ Per Unit
Suwannee River Economic Council	Passenger Trip	\$17.57
Levy ARC/Medwaiver Program	Passenger Trip (individual)	\$12.24
Levy ARC/Medwaiver Program	Passenger Trip (group)	\$12.24
Levy ARC/Medwaiver Program	Passenger Trip (wheelchair/group)	\$27.70

Preliminary Information Worksheet Version 1.4

CTC Name: Levy Board of County Commissioners/Levy County Transit

County (Service Area): Levy

Contact Person: Connie Conley

Phone # 352-486-3485

Check Applicable Characteristic:

<p>ORGANIZATIONAL TYPE:</p> <p><input checked="" type="radio"/> Governmental</p> <p><input type="radio"/> Private Non-Profit</p> <p><input type="radio"/> Private For Profit</p>	<p>NETWORK TYPE:</p> <p><input type="radio"/> Fully Brokered</p> <p><input type="radio"/> Partially Brokered</p> <p><input checked="" type="radio"/> Sole Source</p>
---	---

Comprehensive Budget Worksheet

CTC: Levy Board of County Commissioners/Levy County Transit
 County: Levy

Prior Year's ACTUALS from Oct 1st of 2018 to Sept 30th of 2019	Current Year's APPROVED Budget, as amended from Oct 1st of 2019 to Sept 30th of 2020	Upcoming Year's PROPOSED Budget from Oct 1st of	% Change from Prior Year to Current Year	Proposed % Change from Current Year to Upcoming Year
		2020 to Sept 30th of 2021		

REVENUES (CTC/Operators ONLY / Do NOT include coordination contractors!)

Local Non-Govt

Farebox	\$ 20,979	\$ 45,000	\$ 25,000	114.5%	-44.4%	Other - Private Pay, Schools, Misc Revenue, Sales of Surplus and Donations
Medicaid Co-Pay Received						
Donations/ Contributions						
In-Kind, Contributed Services						
Other	\$ 64,505	\$ 45,000	\$ 60,000	-30.2%	33.3%	
Bus Pass Program Revenue						

Local Government

District School Board						
Compl. ADA Services						
County Cash						
County In-Kind, Contributed Services						
City Cash						
City In-kind, Contributed Services						
Other Cash						
Other In-Kind, Contributed Services						
Bus Pass Program Revenue						

CTD

Non-Spons. Trip Program	\$ 383,137	\$ 459,803	\$ 413,817	20.0%	-10.0%	Other TD - Local Coordinating Board
Non-Spons. Capital Equipment						
Rural Capital Equipment	\$ 17,560	\$ -	\$ -	-100.0%		
Other TD (specify in explanation)	\$ 14,535			-100.0%		
Bus Pass Program Revenue						

USDOT & FDOT

49 USC 5307						5311 - invoiced as operating revenue as an overall system operating expense subsidy
49 USC 5310						
49 USC 5311 (Operating)	\$ 162,437	\$ 240,084	\$ 300,000	47.8%	25.0%	
49 USC 5311(Capital)						
Block Grant						
Service Development						
Commuter Assistance						
Other DOT (specify in explanation)						
Bus Pass Program Revenue						

AHCA			
Medicaid	\$ 5,481	\$	-100.0%
Other AHCA (specify in explanation)			
Bus Pass Program Revenue			
DCF			
Alcohol, Drug & Mental Health			
Family Safety & Preservation			
Comm. Care Dis./Aging & Adult Serv.			
Other DCF (specify in explanation)			
Bus Pass Program Revenue			
DOH			
Children Medical Services			
County Public Health			
Other DOH (specify in explanation)			
Bus Pass Program Revenue			
DOE (state)			
Carl Perkins			
Div of Blind Services			
Vocational Rehabilitation			
Day Care Programs			
Other DOE (specify in explanation)			
Bus Pass Program Revenue			
AWI			
WAGES/Workforce Board			
Other AWI (specify in explanation)			
Bus Pass Program Revenue			
DOEA			
Older Americans Act	\$ 20,504	\$ 7,500	15,000
Community Care for Elderly			
Other DOEA (specify in explanation)			
Bus Pass Program Revenue			
DCA			
Community Services			
Other DCA (specify in explanation)			
Bus Pass Admin. Revenue			
APD			
Office of Disability Determination			
Developmental Services			
Other APD (specify in explanation)	\$ 101,054	\$ 79,000	90,000
Bus Pass Program Revenue			
DJJ			
(specify in explanation)			
Bus Pass Program Revenue			

Other Fed or State							
	5339	\$	146,000				
RCAP		\$	17,560				
xxx					-100.0%		
Bus Pass Program Revenue							
Other Revenues							
Interest Earnings							
xxxx		\$	906				
xxxx					-100.0%		
Bus Pass Program Revenue							
Balancing Revenue to Prevent Deficit							
Actual or Planned Use of Cash Reserve							
Balancing Revenue is Short By =						None	None
Total Revenues =			\$954,657		\$876,387	\$903,817	-8.2% 3.1%

Budgeted Rate Base Worksheet

CTC: Levy Board of County Commissioners/Levy County Transit
 County: Levy

		Upcoming Year's BUDGETED Revenues		What amount of the <u>Budgeted Revenue</u> in col. 2 will be generated at the rate per unit determined by this spreadsheet, OR used as local match for these type revenues?	Budgeted Rate <u>Subsidy Revenue</u> EXcluded from the Rate Base	What amount of the <u>Subsidy Revenue</u> in col. 4 will come from funds to purchase equipment, OR will be used as match for the purchase of equipment?
		from July 1st of 2020 to June 30th of 2021				
REVENUES (CTC/Operators ONLY)						
Local Non-Govt						
Farebox	\$	25,000		\$ 25,000	\$ -	
Medicaid Co-Pay Received	\$	-		\$ -	\$ -	
Donations/ Contributions	\$	-		\$ -	\$ -	
In-Kind, Contributed Services	\$	-		\$ -	\$ -	
Other	\$	60,000		\$ 60,000	\$ -	
Bus Pass Program Revenue	\$	-		\$ -	\$ -	
Local Government						
District School Board	\$	-		\$ -	\$ -	
Compl. ADA Services	\$	-		\$ -	\$ -	
County Cash	\$	-		\$ -	\$ -	
County In-Kind, Contributed Services	\$	-		\$ -	\$ -	
City Cash	\$	-		\$ -	\$ -	
City In-kind, Contributed Services	\$	-		\$ -	\$ -	
Other Cash	\$	-		\$ -	\$ -	
Other In-Kind, Contributed Services	\$	-		\$ -	\$ -	
Bus Pass Program Revenue	\$	-		\$ -	\$ -	

CTD					
Non-Spons. Trip Program	\$ 413,817	\$ 413,817	\$ -	\$ -	
Non-Spons. Capital Equipment	\$ -	\$ -	\$ -	\$ -	
Rural Capital Equipment	\$ -	\$ -	\$ -	\$ -	
Other TD	\$ -	\$ -	\$ -	\$ -	
Bus Pass Program Revenue	\$ -	\$ -	\$ -	\$ -	
USDOT & FDOT					
49 USC 5307	\$ -	\$ -	\$ -	\$ -	
49 USC 5310	\$ -	\$ -	\$ -	\$ -	
49 USC 5311 (Operating)	\$ 300,000	\$ 300,000	\$ -	\$ -	
49 USC 5311(Capital)	\$ -	\$ -	\$ -	\$ -	
Block Grant	\$ -	\$ -	\$ -	\$ -	
Service Development	\$ -	\$ -	\$ -	\$ -	
Commuter Assistance	\$ -	\$ -	\$ -	\$ -	
Other DOT	\$ -	\$ -	\$ -	\$ -	
Bus Pass Program Revenue	\$ -	\$ -	\$ -	\$ -	
AHCA					
Medicaid	\$ -	\$ -	\$ -	\$ -	
Other AHCA	\$ -	\$ -	\$ -	\$ -	
Bus Pass Program Revenue	\$ -	\$ -	\$ -	\$ -	
DCF					
Alcoh, Drug & Mental Health	\$ -	\$ -	\$ -	\$ -	
Family Safety & Preservation	\$ -	\$ -	\$ -	\$ -	
Comm. Care Dis./Aging & Adult Serv.	\$ -	\$ -	\$ -	\$ -	
Other DCF	\$ -	\$ -	\$ -	\$ -	
Bus Pass Program Revenue	\$ -	\$ -	\$ -	\$ -	
DOH					
Children Medical Services	\$ -	\$ -	\$ -	\$ -	
County Public Health	\$ -	\$ -	\$ -	\$ -	
Other DOH	\$ -	\$ -	\$ -	\$ -	
Bus Pass Program Revenue	\$ -	\$ -	\$ -	\$ -	

DOE (state)				
Carl Perkins	\$	-	\$	-
Div of Blind Services	\$	-	\$	-
Vocational Rehabilitation	\$	-	\$	-
Day Care Programs	\$	-	\$	-
Other DOE	\$	-	\$	-
Bus Pass Program Revenue	\$	-	\$	-
AWI				
WAGES/Workforce Board	\$	-	\$	-
AWI	\$	-	\$	-
Bus Pass Program Revenue	\$	-	\$	-
DOEA				
Older Americans Act	\$	15,000	\$	15,000
Community Care for Elderly	\$	-	\$	-
Other DOEA	\$	-	\$	-
Bus Pass Program Revenue	\$	-	\$	-
DCA				
Community Services	\$	-	\$	-
Other DCA	\$	-	\$	-
Bus Pass Program Revenue	\$	-	\$	-
APD				
Office of Disability Determination	\$	-	\$	-
Developmental Services	\$	-	\$	-
Other APD	\$	90,000	\$	90,000
Bus Pass Program Revenue	\$	-	\$	-
DJJ				
DJJ	\$	-	\$	-
Bus Pass Program Revenue	\$	-	\$	-

Other Fed or State				
RCAP	5339	\$		
xxx		\$		
Bus Pass Program Revenue		\$		
Other Revenues		\$		
Interest Earnings		\$		
xxxx		\$		
xxxx		\$		
Bus Pass Program Revenue		\$		
Balancing Revenue to Prevent Deficit		\$		
Actual or Planned Use of Cash Reserve		\$		
Total Revenues =		\$	903,817	\$

EXPENDITURES (CTC/Operators ONLY)	
Operating Expenditures	
Labor	\$ 389,600
Fringe Benefits	\$ 200,052
Services	\$ 43,000
Materials and Supplies	\$ 252,965
Utilities	\$ 6,000
Casualty and Liability	\$ -
Taxes	\$ -
Purchased Transportation:	
Purchased Bus Pass Expenses	\$ -
School Bus Utilization Expenses	\$ -
Contracted Transportation Services	\$ -
Other	\$ -
Miscellaneous	\$ 12,200
Operating Debt Service - Principal & Interest	\$ -
Leases and Rentals	\$ -
Contrib. to Capital Equip. Replacement Fund	\$ -
In-Kind, Contributed Services	\$ -
Allocated Indirect	\$ -
Capital Expenditures	
Equip. Purchases with Grant Funds	\$ -
Equip. Purchases with Local Revenue	\$ -
Equip. Purchases with Rate Generated Rev.	\$ -
Capital Debt Service - Principal & Interest	\$ -
	\$ -
Total Expenditures =	\$ 903,817
<i>minus EXCLUDED Subsidy Revenue =</i>	<i>\$ -</i>
Budgeted Total Expenditures INCLUDED	
in Rate Base =	\$ 903,817
Rate Base Adjustment ¹ =	\$ 39,149
Adjusted Expenditures Included in Rate	
Base =	\$ 942,966

Worksheet for Program-wide Rates

CTC: Levy Board of County Commissioners/Levy County Transit
County: Levy

PROGRAM-WIDE RATES	
Total <u>Projected</u> Passenger Miles = 570,889	Fiscal Year 2020 - 2021
Rate Per Passenger Mile = \$ 1.65	
Total <u>Projected</u> Passenger Trips = 31,864	
Rate Per Passenger Trip = \$ 29.59	
<div style="border: 1px solid black; padding: 5px; width: fit-content; margin: 0 auto;"> Avg. Passenger Trip Length 17.9 Miles </div>	
Rates If No Revenue Funds Were Identified As Subsidy Funds	
<div style="border: 1px solid black; padding: 2px; width: fit-content; margin: 0 auto;"> Rate Per Passenger Mile = \$ 1.65 </div>	
<div style="border: 1px solid black; padding: 2px; width: fit-content; margin: 0 auto;"> Rate Per Passenger Trip = \$ 29.59 </div>	

Vehicle Miles
 The miles that a vehicle is scheduled to or actually travels from the time it pulls out from its garage to go into revenue service to the time it pulls in from revenue service.

Vehicle Revenue Miles (VRM)
 The miles that vehicles are scheduled to or actually travel while in revenue service. Vehicle revenue miles exclude:

- Deadhead
- Operator training, and
- Vehicle maintenance testing, as well as
- School bus and charter services.

Passenger Miles (PM)
 The cumulative sum of the distances ridden by each passenger.

Worksheet for Multiple Service Rates

CTC: Levy Board of County Commissioners/Levy County Transit
County: Levy

RATES FOR FY: 2020 - 2021				
Ambul	Chair	Stretcher Leave Blank	Group Leave Blank	
536,636	+	34,253	+	0
\$1.58		\$2.72		\$0.00 \$0.00 \$0.00

Appendix C: Vehicle Inventory



3/16/2021

Levy County Transit Vehicle Inventory

Year	Make	Model	Vehicle Type	VIN Number	FDOT Control # (if applicable)	Agency Vehicle #	Ramp or Lift (specify)	# of Seats and W/C Positions	Other Equipment	Use	Average Miles/Yr	Current Mileage	Funding Source	Name of Title Holder	Acquisition Date	Cost	% Federal funding	Location	Condition	Expected Date of Retirement	Date of Disposition (if applicable)	Sale Price (if applicable)	Status
2013	Chev	4500	D	1GB6G58GXD1170903	N/A	LCT1	Lift	12 & 2	Cameras	Daily	50000	249835	RCAP	TD Comm	6/19/2013	68,290	0	Levy Co.	Excellent	2017			Active
2020	Ford	E450	D	1FDDE4FS9KDC66538	20058	LCT2	Lift	14 & 2	Cameras	Daily	50000	7968	5339	FDOT	9/21/2020	81,454	100%	Levy Co.	Excellent	2020			Active
2015	Ford	E450	D	1FDWE3FL6FDA28090	N/A	LCT 6	Lift	10 & 2	Cameras	Daily	50000	147375	RCAP	TD Comm	7/23/2015	79,380	0	Levy Co.	Excellent	2020			Active
2015	Ford	E450	D	1FDDE4FS0FDA35291	N/A	LCT 7	Lift	14 & 2	Cameras	Daily	50000	189550	RCAP	TD Comm	7/29/2016	74,089	0	Levy Co.	Excellent	2021			Active
2016	Ford	E450	D	1FDDE4FSXGDC55331	91266	LCT8	Lift	12 & 2	Cameras	Daily	50000	195420	5339	FDOT	7/29/2016	84,631	0	Levy Co.	Excellent	2021			Active
2016	Ford	E450	D	1FDDE4FS3GDC57115	N/A	LCT9	Lift	14 & 2	N/A	Daily	50000	165629	RCAP	TD Comm	6/27/2017	81,675	0	Levy Co.	Excellent	2022			Active
2016	Ford	E450	D	1FDDE4FS1HDC53064	91299	LCT10	Lift	14 & 2	Cameras	Daily	50000	166399	5339	FDOT	10/5/2017	78,604	0	Levy Co.	Excellent	2022			Active
2017	Ford	E450	D	1FDDE4FSXHDC53063	91298	LCT 11	Lift	14 & 2	Cameras	Daily	50000	149033	5339	FDOT	10/3/2017	78,604	0	Levy Co.	Excellent	2022			Active
2017	Ford	U4X	E	1FDVU4XG6JKA36684	70223	LCT 12	Lift	8 & 1	Cameras	Daily	50000	23857	5339	FDOT	3/29/2018	70,654	0%	Levy Co.	Excellent	2023			Active
2018	Ford	U4X	E	1FDVU4XM3JKA33117	N/A	LCT13	Lift	8&1	Cameras	Daily	50000	35682	RCAP	TD Comm	6/28/2018	68,364	0%	Levy Co.	Excellent	2023			Active
2018	Ford	U4X	E	1FDVU4XM5JKA91326	20023	LCT14	Lift	8&1	Cameras	Daily	50000	16205	5339	FDOT	1/17/2019	69,415	0%	Levy Co.	Excellent	2024			Active
2018	Ford	U4X	E	1FDVU4XM7JKA91327	20027	LCT15	Lift	8&1	Cameras	Daily	50000	24351	5339	FDOT	3/14/2019	69,415	0%	Levy Co.	Excellent	2025			Active
2019	Ford	E450	D	1FDDE4FS4KDC53292	20046	LCT16	Lift	14&2	Cameras	Daily	50000	50192	5339	FDOT	9/30/2019	77,701	0%	Levy Co.	Excellent	2025			Active
2019	Ford	E450	D	1FDDE4FS6KDC53293	20042	LCT17	Lift	14&2	Cameras	Daily	50000	55444	5339	FDOT	10/21/2019	78,597	0%	Levy Co.	Excellent	2025			Active
2006	Chev	C5500	C	1GBE5V1216F417495	N/A	LCT 103	Lift	20 & 3	Cameras	Idle	45000	265893	FTA	Levy Co	3/28/2006	78,949	10%	Levy Co.	Good	2011			Idle
2010	Chev	C4500	C	1GBE4V1G89F413067	80238	LCT107	N/A	24	Cameras	Daily	25000	181857	ARRA	FDOT	2/19/2010	71,339	0	Levy Co.	Good	2020			Active
2016	Ford	F550	C	1FDAF5GV8GEA53369	91262	LCT 110	Lift	20 & 2	Cameras	passion	12000	21743	5339	FDOT	6/29/2016	107,263	0	Levy Co.	Excellent	2022			Active

Appendix D: Annual Safety and Security Certification

STATE OF FLORIDA DEPARTMENT OF TRANSPORTATION
CERTIFICATE OF COMPLIANCE

725-030-10
TRANSIT
12/01

for a
SECTION 5311 SUBRECIPIENT
(Certifying compliance with 49 CFR Parts 40, 655)
To
Florida Department of Transportation

DATE 12/22/2020


Section 5311 Subrecipient Information:
AGENCY NAME: Levy County BOCC
ADDRESS: 310 School Street, Bronson, FL 32621
PHONE: 352-486-3485

FDOT District Office Information:
NAME: Doreen Joyner-Howard, AICP
ADDRESS: 2198 Edison Avenue, Jacksonville, FL
PHONE: 904-360-5650

I, Connie Conley (Name), Director (Title)

hereby certify that Levy County Board of County Commissioners/Levy County Transit (Name of Subrecipient) and its applicable contractor(s) (listing attached hereto) for Levy County Board of County Commissioners/Levy County Transit (Name of Subrecipient)

has (have) established and implemented an anti-drug and alcohol misuse prevention program in accordance with the provisions of 49 CFR Parts 40 and 655 as amended. I further certify that the employee training conducted under this part meets the requirements of 49 CFR Parts 40 and 655 as amended.


Signature

Attachment: (Applicable Contractor(s) - Name, Address, Phone #, Contact Person)



Bus Transit System Annual Safety and Security Certification

*Certifying Compliance with Rule 14-90, FAC to the
Florida Department of Transportation (FDOT)*

Certification Date (Current): 2021

Certification Year: (Previous): 2020

**Name and Address of Bus Transit System: Levy County Board of County Commissioners/Levy
County Transit**

The Bus Transit System (Agency) named above hereby certifies the following:

- 1. The Agency has adopted a System Safety Program Plan (SSPP) and a Security Program Plan (SPP) pursuant to the standards set forth in Rule Chapter 14-90, Florida Administrative Code.*
- 2. The Agency is in compliance with its adopted SSPP and SPP.*
- 3. The Agency has performed annual safety inspections on all operational vehicles in accordance with Rule Chapter 14-90, Florida Administrative Code.*
- 4. The Agency has conducted reviews of SSPP and SPP and the plans are up to date.*

Blue Ink Signature: Connie G
(Individual Responsible for Assurance of Compliance)

Date: 12/22/2020

Name: Connie Conley **Title:** Director

Name and address of entity(ies) which has (have) performed bus safety inspections and security assessments:

Name: Levy County Transit

Address: 970 E Hathaway Avenue, Bronson, FL 32621

Name of Qualified Mechanic who Performed Annual Inspections: Bruce Haney



Annual Grant Self Certification

Certifying compliance with United States Code Section 5309, 5310, 5311/ARRA, 5316, 5317, and 5339 Programs to the Florida Department of Transportation

Certification Date (Current): 2021

Certification Year: (Previous): 2020

Name and Address of Bus Transit System: Levy County Board of County Commissioners

The Bus Transit System (Agency) named above hereby certifies the following:

1. The grant funded vehicles, facilities, and equipment continue to be used for the purpose for which the grants were awarded.
2. The vehicles, facilities, and equipment have not been sold, damaged or otherwise taken out of service. The Agency has notified the Department of all accidents and casualties within 24 hours of such events.
3. The Agency carries adequate insurance to maintain, repair, or replace the vehicles, facilities, and equipment in the event of loss or damage due to an accident or casualty.
4. The Agency's Preventative Maintenance Plan and Facilities and Equipment Preventative Maintenance Plan (if applicable) is current and the agency is in compliance with the Plan (s). The vehicles, facilities, and equipment are maintained in good working condition. Annual vehicle and wheelchair safety inspections have been performed on all operational buses.

Blue Ink Signature: Connie Conley Date: December 22, 2020
(Individual responsible for assurance of compliance)

Name: Connie Conley

Title: Director

Name and address of entity(ies) which has (have) performed bus safety inspections:

Name: Levy County Transit

Address: 970 E Hathaway Avenue, Bronson, FL 32621

Name of qualified mechanic who performed wheelchair inspections: Bruce Haney

Name and address of entity(ies) which has (have) performed wheelchair inspections:

Name: Levy County Transit

Address: 970 E Hathaway Avenue, Bronson, FL 32621

Name of qualified mechanic who performed annual inspections: Bruce Haney

Name and address of entity(ies) which has (have) performed annual inspections:

Name: Levy County Transit

Address: 970 E Hathaway Avenue, Bronson, FL 32621

THIS PAGE LEFT BLANK INTENTIONALLY

North Central Florida Regional Planning Council

Transportation Disadvantaged Service Plan Team

Scott R. Koons, AICP, Executive Director

* Lynn Franson-Godfrey, AICP, Senior Planner

* Primary Responsibility



Use the QR Reader App
on your smart phone to
visit our website!

Levy County
Transportation Disadvantaged Coordinating Board

2009 NW 67th Place, Gainesville, FL 32653-1603

www.ncfrpc.org/td



Serving Alachua
Bradford • Columbia
Dixie • Gilchrist • Hamilton
Lafayette • Levy • Madison
Suwannee • Taylor • Union Counties

2009 NW 67th Place, Gainesville, FL 32653-1603 • 352.955.2200

April 1, 2021

TO: Levy County Transportation Disadvantaged Coordinating Board
FROM: Lynn Godfrey, AICP, Senior Planner
SUBJECT: 2021/22 Rural Area Capital Assistance Program Grant Application

RECOMMENDATION

Approve Levy County Transit's application for 2021/22 Rural Area Capital Assistance Program Grant funds.

BACKGROUND

The Rural Area Capital Assistance Program is administered by the Florida Commission for the Transportation Disadvantaged. Grant funds awarded by this program can be used to address capital transportation needs in rural areas of the State. Eligible applicants are designated Community Transportation Coordinators.

Attached is Levy County Transit's 2010/22 Rural Area Capital Assistance Program Grant application. If you have any questions concerning this matter, please do not hesitate to contact me.

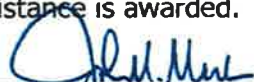

Attachment


T:\Lynn\TD2021\Levy\Memos\racag.docx



**SHIRLEY CONROY RURAL AREA
CAPITAL ASSISTANCE GRANT
REQUEST FOR FUNDING**

DATE SUBMITTED	
LEGAL NAME OF REQUESTING CTC	Levy County Board of County Commissioners/Levy County Transit
FEDERAL IDENTIFICATION NUMBER	59-6000717
REGISTERED ADDRESS	P.O. Box 310
CITY, STATE, ZIP CODE	Bronson, FL 32621
CONTACT PERSON FOR THIS GRANT	Connie Conley
PHONE NUMBER	352-486-3485
E-MAIL ADDRESS	conley-connie@levycounty.org
PROJECT LOCATION [County(ies)]	Levy
PROPOSED START DATE	July 1, 2021
AMOUNT OF FUNDING REQUESTED (90%)	\$91,515.00

<p><u>CTC REPRESENTATIVE AUTHORIZATION AND ACKNOWLEDGEMENT</u></p> <p>I hereby certify that this request has been duly authorized by the governing body of the CTC. The CTC also certifies that it has reviewed and understands the Grant Program Manual and intends to complete the project in compliance with all grant program requirements if the assistance is awarded.</p> <p>X </p>	<p><u>LOCAL COORDINATING BOARD APPROVAL</u></p> <p>I hereby certify that this request for funding has been reviewed in its entirety by the Local Coordinating Board.</p> <p>X </p>		
Signature Of Authorized Representative John Meeks, Board Chairman	Date	Coordinating Board Chairperson's Signature John Meeks	Date
Name Of Authorized Representative And Title		Name Of LCB Chairperson	

APPROVED AS TO FORM AND LEGAL SUFFICIENCY 
Anne Bast Brown, County Attorney

JUSTIFICATION FOR EQUIPMENT REQUESTED:

In the agencies' current inventory is a 2015 vehicle, purchased through the Shirley Conroy Rural Area Capital grant. This vehicle currently has 194,237 miles. The cost of repairs for this vehicle has risen over the past year due to a mechanical issue that causes the bus to shut off and not restart. This vehicle needs to be replaced to reduce repair costs and reduce down time. This vehicle has always been serviced within the 5,000 mile service threshold, as all vehicles within the fleet.

The majority of Levy County residents that utilize services, qualify for transportation, under the Transportation Disadvantaged program. The agency prides itself with the keeping all vehicles in excellent condition, inside and out. Those county residents that use the service deserve to ride in vehicles that are clean, well maintained and reliable for all their needed trips.

This vehicle request, would replace the forementioned 2015 vehicle.

Attached are pages out of the agencies' Transportation Disadvantaged Service Plan (TDSP), related to population, service area description and maps of the county.

DESCRIPTION OF CAPITAL EQUIPMENT REQUESTED:

Vehicles

1, 2, 3, etc. +	(R) or (E)*	Fuel Type **	Description/Vehicle Type/Procurement Source	Quantity	Estimated Cost (from Order Form)
1	R	G	23' Ford Cutaway vehicle. 14 seating capacity or 12 seating and 2 wheelchairs. Including inside cameras	1	\$91,515.00

+ Prioritization of Need

*Replacement (R) or Expansion (E)

** Fuel Type – D=Diesel G=Gas A=Alternative

Equipment NOT Requested as part of a Vehicle Purchase

1, 2, 3, etc. +	Description	Quantity	Estimated Cost

+ Prioritization of Need

PROJECT COST:

Total Project Cost	(100%)	\$91,515.00
Less Local Match	(10%) *	REDI
Transportation Disadvantaged Trust Funds*	(90%)	\$91,515.00

* If REDI, include 100% of the total project cost on the Transportation Disadvantaged Trust Funds line and "REDI" on the Local Match line.

SOURCE OF REQUIRED LOCAL MATCH:

Levy County is a REDI County, therefore requesting a waiver of match.



**SHIRLEY CONROY RURAL AREA
CAPITAL ASSISTANCE GRANT
CURRENT VEHICLE INVENTORY**

NAME OF CTC: Levy County Board of County Commissioners/Levy County Transit

Model Year	Chassis Make and Model	Vehicle Identification Number (17 Digits)	Maximum Ambulatory/ Wheelchair Passenger Seating	Average Vehicle Miles Per Year	Current Mileage as of (Date)	Anticipated Retirement Year	Source of Funding
See Attached Inventory Sheet							

NOTE: Identify the Vehicle(s) that would be replaced with this or other grants by placing * next to the model year.

Levy County Board of County Commissioners/Levy County Transit Vehicle Inventory

Year	Make	Model	Vehicle Type	VIN Number	FDOT Control # (if applicable)	Agency Vehicle #	Ramp or Lift (specify)	# of Seats and W/C Positions	Other Equipment	Use	Average Miles/Yr	Current Mileage	Funding Source	Name of Title Holder	Acquisition Date	Cost	% Federal funding	Location	Condition	Expected Date of Retirement	Date of Disposition (if applicable)	Sale Price (if applicable)	Status
2013	Chev	4500	D	1GB6G5BGXD1170903	N/A	LCT1	Lift	12 & 2	Cameras	Daily	50000	249343	RCAP	TD Comm	6/19/2013	68,290	0	Levy Co.	Excellent	2017			Backup
2020	Ford	E450	D	1FDDE4FS9KDC66538	20058	LCT2	Lift	14 & 2	Cameras	Daily	50000	6684	5339	FDOT	9/21/2020	81,454	100%	Levy Co.	Excellent	2020			Active
2015	Ford	E450	D	1FDWE3FL6FDA28090	N/A	LCT 6	Lift	10 & 2	Cameras	Daily	50000	145801	RCAP	TD Comm	7/23/2015	79,380	0	Levy Co.	Excellent	2020			Active
2015	Ford	E450	D	1FDDE4FS0FDA35291	N/A	LCT 7	Lift	14 & 2	Cameras	Daily	50000	189550	RCAP	TD Comm	7/29/2016	74,089	0	Levy Co.	Excellent	2021			Active
2016	Ford	E450	D	1FDDE4FSXGDC55331	91266	LCT8	Lift	12 & 2	Cameras	Daily	50000	196420	5339	FDOT	7/29/2016	84,631	0	Levy Co.	Excellent	2021			Active
2016	Ford	E450	D	1FDDE4FS3GDC57115	N/A	LCT9	Lift	14 & 2	Cameras	Daily	50000	162217	RCAP	TD Comm	6/27/2017	81,675	0	Levy Co.	Excellent	2022			Active
2016	Ford	E450	D	1FDDE4FS1HDC53064	91299	LCT10	Lift	14 & 2	Cameras	Daily	50000	165365	5339	FDOT	10/5/2017	78,604	0	Levy Co.	Excellent	2022			Active
2017	Ford	E450	D	1FDDE4FSXHDC53063	91298	LCT 11	Lift	14 & 2	Cameras	Daily	50000	147087	5339	FDOT	10/3/2017	78,604	0	Levy Co.	Excellent	2022			Active
2017	Ford	U4X	E	1FDVU4XG6JKA36684	70223	LCT 12	Lift	8 & 1	Cameras	Daily	50000	23764	5339	FDOT	3/29/2018	70,654	0%	Levy Co.	Excellent	2023			Active
2018	Ford	U4X	E	1FDVU4XM3JKA33117	N/A	LCT13	Lift	8 & 1	Cameras	Daily	50000	35682	RCAP	TD Comm	6/28/2018	68,364	0%	Levy Co.	Excellent	2023			Active
2018	Ford	U4X	E	1FDVU4XM5JKA91326	20023	LCT14	Lift	8 & 1	Cameras	Daily	50000	16205	5339	FDOT	1/17/2019	69,415	0%	Levy Co.	Excellent	2024			Active
2018	Ford	U4X	E	1FDVU4XM7JKA91327	20027	LCT15	Lift	8 & 1	Cameras	Daily	50000	24154	5339	FDOT	3/14/2019	69,415	0%	Levy Co.	Excellent	2025			Active
2019	Ford	E450	D	1FDDE4FS4KDC53292	20046	LCT16	Lift	14 & 2	Cameras	Daily	50000	49436	5339	FDOT	9/30/2019	77,701	0%	Levy Co.	Excellent	2025			Active
2019	Ford	E450	D	1FDDE4FS6KDC53293	20042	LCT17	Lift	14 & 2	Cameras	Daily	50000	55048	5339	FDOT	10/21/2019	78,597	0%	Levy Co.	Excellent	2025			Active
2006	Chev	C5500	C	1GBE5V1216F417495	N/A	LCT 103	Lift	20 & 3	Cameras	Idle	45000	265893	FTA	Levy Co	3/28/2006	78,949	10%	Levy Co.	Good	2011			Idle
2010	Chev	C4500	C	1GBE4V1G89F413057	80238	LCT107	N/A	24	Cameras	Daily	25000	181770	ARRA	FDOT	2/19/2010	71,339	0	Levy Co.	Good	2020			Idle
2016	Ford	F550	C	1FDAF5GY8GEA53369	91262	LCT 110	Lift	20 & 2	Cameras	Passion	12000	21398	5339	FDOT	6/29/2016	107,263	0	Levy Co.	Excellent	2022			Active

**RESOLUTION
2021-029**

**A RESOLUTION OF LEVY COUNTY, FLORIDA,
AUTHORIZING THE FILING OF A SHIRLEY CONROY
RURAL AREA CAPITAL ASSISTANCE PROGRAM
GRANT APPLICATION WITH THE FLORIDA
COMMISSION FOR THE TRANSPORTATION
DISADVANTAGED; PROVIDING FOR APPROVAL OF
APPLICATION AND AGREEMENT; PROVIDING FOR
AUTHORIZATION FOR ADMINISTRATIVE DUTIES;
PROVIDING AN EFFECTIVE DATE.**

WHEREAS, the Board of County Commissioners of Levy County, Florida (“the Board”) has the authority to file a Shirley Conroy Rural Area Capital Assistance Program Grant application (“Grant Application”) and to undertake a transportation disadvantaged service project as authorized by Section 427.0159, Florida Statutes, and Rule 41-2, Florida Administrative Code; and

WHEREAS, the Board hereby authorizes the filing of a Grant Application with the Florida Commission for the Transportation Disadvantaged;

NOW, THEREFORE, BE IT RESOLVED BY THE BOARD THAT:

1. The Board has the authority to file this Grant Application.
2. The Board hereby authorizes the filing and execution of the Grant Application by the Chair of the Board on behalf of the Board or the Vice-Chair in the Chair's absence, with the Florida Commission for the Transportation Disadvantaged.
3. The Chair serves as the Registered Agent for the Board. The Chair's address is P. O. Box 310, 310 School Street, Bronson, Florida, 32621.
4. The Board authorizes the Chair or Vice-Chair of the Board, or either of their designees, to sign any and all agreements or contracts which are required in connection with the Grant Application.
5. The Board authorizes the County Coordinator and/or the Transportation Department Director or either of their designees to sign any and all assurances, reimbursement invoices, warranties, certifications and any other documents which may be required in connection with the Grant Application or subsequent agreements.


DULY PASSED AND ADOPTED this the 16th day of March, 2021.

**BOARD OF COUNTY COMMISSIONERS
LEVY COUNTY, FLORIDA**



John Meeks, Chairman

ATTEST: Clerk of the Circuit Court
and Ex Officio Clerk to the Board


for Danny J. Shipp

**APPROVED AS TO FORM AND
LEGAL SUFFICIENCY:**



Anne Bast Brown, County Attorney

z:\es\shirleyconroy.auhtorize.2021-2022
LR2021-018



Serving Alachua
Bradford • Columbia
Dixie • Gilchrist • Hamilton
Lafayette • Levy • Madison
Suwannee • Taylor • Union Counties

2009 NW 67th Place, Gainesville, FL 32653-1603 • 352.955.2200

April 1, 2021

TO: Levy County Transportation Disadvantaged Coordinating Board
FROM: Lynn Godfrey, AICP, Senior Planner
SUBJECT: Levy County Transit Operations Reports

RECOMMENDATION

No action required. This agenda item is for information only.

BACKGROUND

Attached are the following reports for the Board's review:

1. October - December 2020 Operations Report;
2. October - December 2020 Complaint/Commendation Report; and
3. October - December 2020 Trip Denial Report.

If you have any questions regarding the attached reports, please do not hesitate to contact me.

Attachments

T:\Lynn\TD2021\Levy\Memos\statapril.docx

**QUARTERLY OPERATING REPORT
LEVY COUNTY TRANSIT
LEVY COUNTY
OCTOBER - DECEMBER 2020**

OPERATING DATA	LEVY COUNTY TRANSIT
NUMBER OF INVOICED TRIPS	4,381
Florida Commission for the Transportation Disadvantaged	1,474
Florida Managed Medical Assistance Program	2
Florida Department of Elder Affairs	0
Levy County ARC	258
Other	2,647
TOTAL VEHICLE MILES	67,131
TOTAL REVENUE VEHICLE MILES	57,983
TOTAL VEHICLE HOURS	2,664
TOTAL DOLLARS INVOICED	\$190,695.10
Florida Commission for the Transportation Disadvantaged	\$82,895.02
Florida Managed Medical Assistance Program	\$166.50
Florida Department of Elder Affairs	\$0.00
Levy County ARC	\$3,559.88
Other (Private Pay and Schools)	\$104,073.70
AVERAGE COST PER TRIP	\$43.53
Florida Commission for the Transportation Disadvantaged	\$56.24
Florida Managed Medical Assistance Program	\$83.25
Florida Department of Elder Affairs	#DIV/0!
Levy County ARC	\$13.80
Other	\$39.32
AVERAGE COST PER VEHICLE MILE	\$2.84
AVERAGE COST PER REVENUE VEHICLE MILE	\$3.29
AVERAGE COST PER VEHICLE HOUR	\$71.58
TRIP PURPOSE*	
Medical	1,777
Employment	9
Education/Training	2,357
Shopping	189
Meal Site	0
Recreation	8
Other (Social, Legal, Escorts)	41
NUMBER OF TRIPS DENIED	0
NUMBER OF SINGLE PASSENGER TRIPS PROVIDED	4,381
PERCENT OF SINGLE PASSENGER TRIPS	100%
NUMBER OF ACCIDENTS	0
NUMBER OF VEHICLES	7
AVERAGE NUMBER OF TRIPS PER VEHICLE	625
AVERAGE MILES PER TRIP	15
NUMBER OF ROADCALLS	3
MILES BETWEEN ROADCALLS	22,377

Source: Levy County Transit

**QUARTERLY OPERATING REPORT
LEVY COUNTY TRANSIT
LEVY COUNTY
OCTOBER - DECEMBER 2019**

OPERATING DATA	LEVY COUNTY TRANSIT
NUMBER OF INVOICED TRIPS	8,131
Florida Commission for the Transportation Disadvantaged	2,684
Florida Managed Medical Assistance Program	0
Florida Department of Elder Affairs	319
Levy County ARC	1,867
Other	3,261
TOTAL VEHICLE MILES	111,010
TOTAL REVENUE VEHICLE MILES	96,661
TOTAL VEHICLE HOURS	4,416
TOTAL DOLLARS INVOICED	\$150,191.33
Florida Commission for the Transportation Disadvantaged	\$108,873.62
Florida Managed Medical Assistance Program	\$0.00
Florida Department of Elder Affairs	\$5,604.83
Levy County ARC	\$23,397.64
Other	\$12,315.24
AVERAGE COST PER TRIP	\$18.47
Florida Commission for the Transportation Disadvantaged	\$40.56
Florida Managed Medical Assistance Program	\$0.00
Florida Department of Elder Affairs	\$17.57
Levy County ARC	\$12.53
Other	\$3.78
AVERAGE COST PER VEHICLE MILE	\$1.35
AVERAGE COST PER REVENUE VEHICLE MILE	\$1.55
AVERAGE COST PER VEHICLE HOUR	\$34.01
TRIP PURPOSE*	
Medical	2,142
Employment	207
Education/Training	4,598
Shopping	191
Meal Site	185
Recreation	267
Other (Social, Legal, Escorts)	541
NUMBER OF TRIPS DENIED	0
NUMBER OF SINGLE PASSENGER TRIPS PROVIDED	8,131
PERCENT OF SINGLE PASSENGER TRIPS	100%
NUMBER OF ACCIDENTS	0
NUMBER OF VEHICLES	8
AVERAGE NUMBER OF TRIPS PER VEHICLE	1,016
AVERAGE MILES PER TRIP	14
NUMBER OF ROADCALLS - (2 Starters, 1 Fuel pump, Lift door switch, Lights)	5
MILES BETWEEN ROADCALLS	22,202

**LEVY COUNTY
SERVICE COMPLAINTS/COMMENDATIONS
OCTOBER - DECEMBER 2020**

TYPE OF COMPLAINT	TOTAL	Resolved
Vehicle Condition	0	-
Driver's Behavior	0	-
Client Behavior	0	-
Tardiness - Late pickup	0	-
Tardiness - Late dropoff	0	-
No Show by Operator	0	-
Dispatch/Scheduling	0	-
Service Denial	0	-
Other	0	-
TOTAL	0	0
COMMENDATIONS	2	-

Source: Levy County Transit

**LEVY COUNTY
UNMET TRANSPORTATION NEEDS
OCTOBER - DECEMBER 2020**

REASON FOR TRIP DENIAL	NUMBER OF TRIP DENIALS
Lack of Funding	0
Trip Purpose	0
Out of Service Area Trip	0
Insufficient Advance Notice	0
After Hours Trip Request	0
Weekend Trip Request	0
Other (Non-medical-overbooked)	0
TOTALS	0

Source: Levy County Transit

ATTENDANCE RECORD

**LEVY COUNTY
TRANSPORTATION DISADVANTAGED
COORDINATING BOARD**

MEMBER/ORGANIZATION	NAME	1/16/2020	6/18/2020	9/17/2020	3/18/2021
Chair	Commissioner John Meeks				P
Florida Department of Transportation	Sandra Collins	A	P	P	P
Alternate Member	Lauren Adams	A	A	P	A
Florida Department of Children and Families	John Wisker		P	P	P
Alternate Member	Amy Burton	A	A	A	A
Florida Department of Education	Jeff Aboumrad	P	P	A	A
Alternate Member	Peter Shepis	A	A	A	A
Florida Department of Elder Affairs	Matthew Pearson	A	P	A	P
Alternate Member	Vacant				
Florida Agency for Health Care Administration	Deweese Ogden	P	P	P	P
Alternate Member	Vacant				
Florida Agency for Persons with Disabilities	Sheryl Dick-Stanford				A
Alternate Member	Sylvia Bamburg			A	P
Regional Workforce Board	Larry Trowbridge				
Alternate Member	Cindy LeCouris	P	P	P	P
Central Florida Community Action Agency	Tiffany McKenzie	P	P	P	P
Alternate Member	Charles J. Harris, Jr.	A	A	A	A
Public Education Community	Gary Masters	A	A	A	P
Alternate Member	Joseph Wain	P	P	A	A
Veterans	Robert E. Lowyns	P	A	A	P
Alternate Member	Julie E. Rose	A	P	A	A
Citizen Advocate	Renate M. Cannon, Vice-Chair	P	P	P	A
Alternate Member	Vacant				
Citizen Advocate-User	Tammy Jean Ippolito	A	A	A	A
Alternate Member	Vacant				
Persons with Disabilities	Vacant				
Alternate Member	Vacant				
Elderly	Vacant				
Alternate Member	Vacant				
Local Medical Community	Vacant				
Alternate Member	Vacant				
Children at Risk	Sandra Woodard	P	P	P	P
Alternate Member	Brooke Ward	A	A	A	A
Private Transit	Vacant				
Alternate Member	Vacant				

LEGEND KEY: P-Present A-Absent

ATTENDANCE POLICY: According to Section G (10) of the Bylaws: "The North Central Florida Regional Planning Council shall review and consider rescinding the appointment of any voting member of the Board who fails to attend three consecutive meetings."

