



Serving Alachua
Bradford • Columbia
Dixie • Gilchrist • Hamilton
Lafayette • Levy • Madison
Suwannee • Taylor • Union Counties

2009 NW 67th Place, Gainesville, FL 32653-1603 • 352.955.2200

October 5, 2022

TO: Gilchrist County Transportation Disadvantaged Coordinating Board
FROM: Lynn Godfrey, AICP, Senior Planner
SUBJECT: Meeting Announcement

The Gilchrist County Transportation Disadvantaged Coordinating Board will hold a business meeting **Wednesday, October 12, 2022 at 1:30 p.m.** in the meeting room of Suwannee River Economic Council, Inc. Client/Senior Services Center located at 1439 SW CR 307A in Trenton, Florida. The meeting will also be conducted via communications media technology in the following format:

DIAL IN NUMBER: **Toll free 1.888.585.9008**

CONFERENCE CODE: **864 183 272**

****Please note that at least two (2) Board members must be present in person in addition to at least four (4) Board members present via communications media technology to establish a quorum in order to vote on agenda items that require formal action.****

Per the Centers for Disease Control and Prevention guidelines, to reduce the risk of becoming infected with the virus that causes COVID-19 and potentially spreading it to others, fully vaccinated people should wear a mask indoors in public if they are in an area of substantial or high transmission; if someone in their household is immunocompromised or at increased risk for severe disease; or if someone in their household is unvaccinated.

Attached is the meeting agenda and supporting materials. If you have any questions concerning the meeting, please do not hesitate to contact me at 1-800-226-0690 extension 110.

Pursuant to the provisions of the Americans with Disabilities Act, any person requiring special accommodations to participate in this public meeting is asked to advise our office at least **2 business days** before the meeting by contacting 352.955.2200 extension 110. If you are hearing or speech impaired, please contact our office using the Florida Relay Service, 1.800.955.8771 (TDD) or 1.800.955.8770 (Voice).

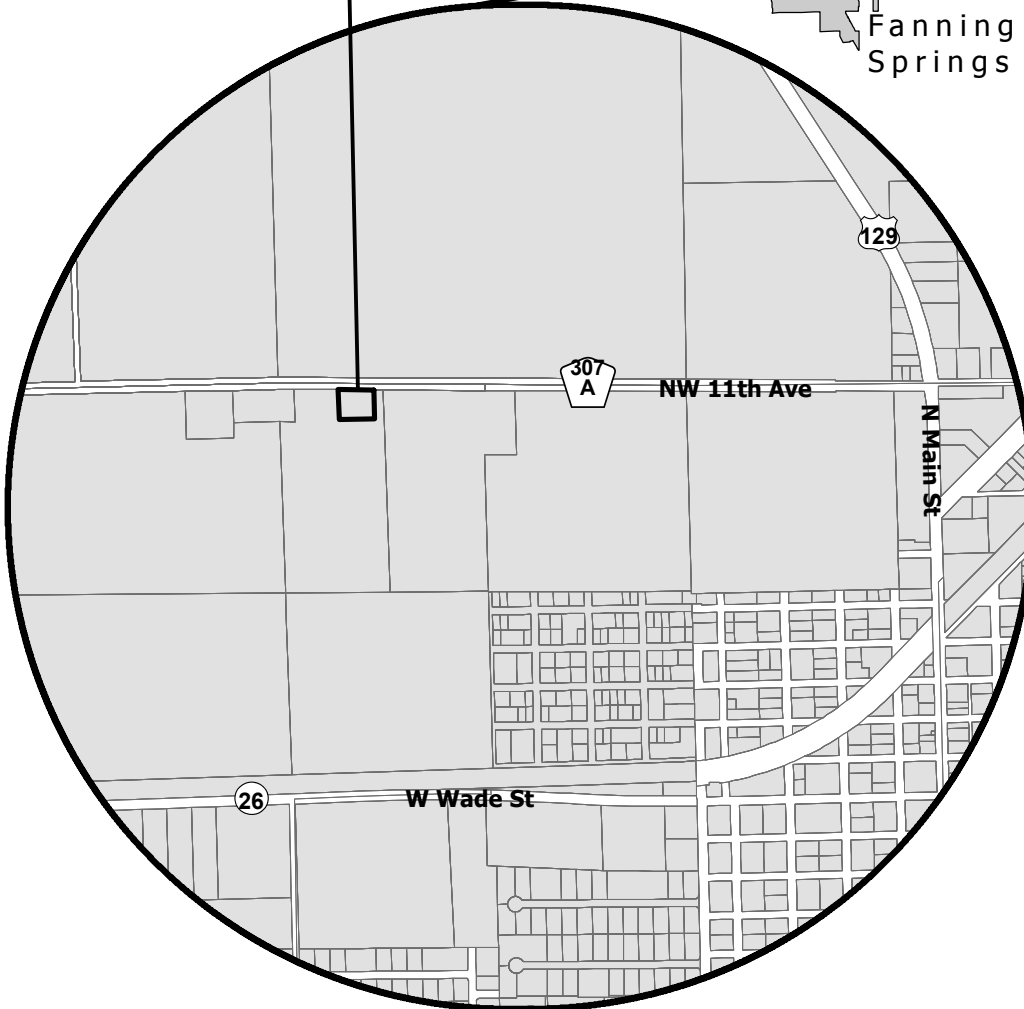
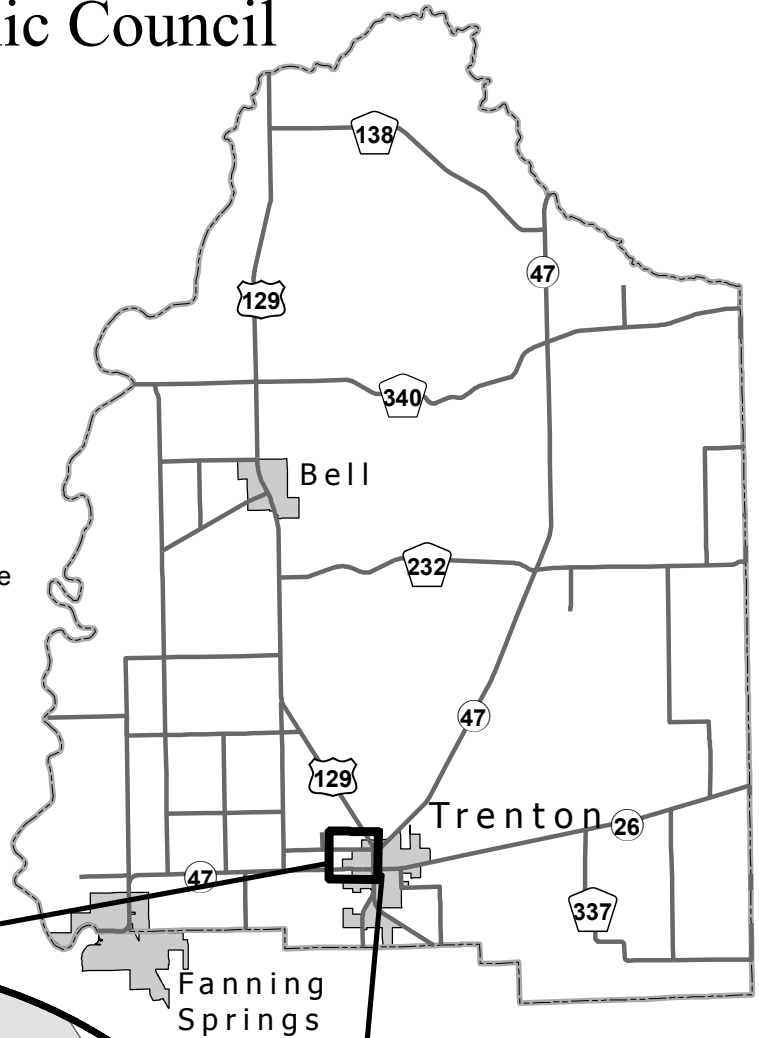
Attachments

T:\Lynn\TD2022\Gilchrist\Memos\oct.docx

Suwannee River Economic Council Meeting Facility 1439 SW CR 307A Trenton, Florida 32693

Directions: From the intersection of U.S. Highway 129 (also known as Main St) and SW County Road 307A (also known as NW 11th Ave) in the City of Trenton, head West onto SW County Road 307A (also known as NW 11th Ave), travel approximately 0.7 miles, and the Suwannee River Economic Council Meeting Facility will be on the left, on the South side of SW County Road 307A (also known as NW 11th Ave).

Suwannee River
Economic Council
Meeting Facility



1 inch = 1,250 feet





Serving Alachua
Bradford • Columbia
Dixie • Gilchrist • Hamilton
Lafayette • Levy • Madison
Suwannee • Taylor • Union Counties

2009 NW 67th Place, Gainesville, FL 32653-1603 • 352.955.2200

**GILCHRIST COUNTY
TRANSPORTATION DISADVANTAGED COORDINATING BOARD**

MEETING ANNOUNCEMENT AND AGENDA

Meeting Room
Suwannee River Economic Council, Inc.
Client/Senior Service Center
1439 SW CR 307A
Trenton, Florida
Dial in Number: Toll free 1.888.585.9008
Conference Code: 864 183 272

Wednesday
October 12, 2022
1:30 p.m.

I. BUSINESS MEETING – CALL TO ORDER

- A. Invocation**
- B. Pledge of Allegiance**
- C. Roll Call**

II. CONSENT AGENDA

ACTION REQUIRED

- A. Approval of the Meeting Agenda Page 3**
- B. Approval of the July 13, 2022 Minutes Page 7**

III. NEW BUSINESS

- A. 2021/22 Annual Performance Evaluation Page 11 ACTION REQUIRED**

The Board needs to approve Suwannee River Economic Council, Inc.'s 2021/22 annual performance evaluation

- B. 2021/22 Annual Operating Report Page 43 NO ACTION REQUIRED**

The Board needs to review the 2021/22 Gilchrist County Annual Operating Report

IV. OTHER BUSINESS

Comments

V. FUTURE MEETING DATES

- A. January 11, 2023 at 1:30 p.m.**
- B. April 12, 2023 at 1:30 p.m.**
- C. July 12, 2023 at 1:30 p.m.**
- D. October 11, 2023 at 1:30 p.m.**

* Please note that this is a tentative meeting schedule, all dates and times are subject to change.

If you have any questions concerning the meeting agenda, please do not hesitate to contact me at 1-800-226-0690, extension 110.

**GILCHRIST COUNTY
TRANSPORTATION DISADVANTAGED COORDINATING BOARD**

MEMBER/REPRESENTING	ALTERNATE/REPRESENTING
Commissioner Marion Poitevint Local Elected Official/Chair	Not Applicable
Geanelly Reveron Florida Department of Transportation Grievance Committee Member	Lauren Adams Florida Department of Transportation
John Wisker Florida Department of Children and Families	Amy Burton Florida Department of Children and Families
Jeff Aboumrad Florida Department of Education	Florida Department of Education
Pastor Ralph Williams Florida Department of Elder Affairs	Vacant Florida Department of Elder Affairs
Reeda Harris Florida Agency for Health Care Administration	Pamela Hagley Florida Agency for Health Care Administration
Sheryl Dick-Stanford Florida Agency for Persons with Disabilities	Sylvia Bamburg Florida Agency for Persons with Disabilities
Elizabeth Wetherington Regional Workforce Board	Vacant Regional Workforce Board
Vacant Florida Association for Community Action Term ending June 30, 2023	Vacant Florida Association for Community Action Term ending June 30, 2023
Michelle Walker-Crawford Public Education	Vacant Public Education
Vacant Veterans Term ending June 30, 2023	Vacant Veterans Term ending June 30, 2023
Vacant Citizen Advocate Term ending June 30, 2024	Vacant Citizen Advocate Term ending June 30, 2024
Maxine Parrish Citizen Advocate - User Term ending June 30, 2024	Vacant Citizen Advocate - User Term ending June 30, 2024
Leslie Esseck Persons with Disabilities Grievance Committee Member Term ending June 30, 2024	Vacant Persons with Disabilities Term ending June 30, 2024
Richard Esseck, Vice-Chair Elderly Grievance Committee Member Term ending June 30, 2023	Vacant Elderly Term ending June 30, 2023
Brittney Keeling Medical Community Term ending June 30, 2025	Krishna Stemple Medical Community Term ending June 30, 2025
Vacant Children at Risk Term ending June 30, 2025	Vacant Children at Risk Term ending June 30, 2025
Vacant Private Transit Term ending June 30, 2025	Vacant Private Transit Term ending June 30, 2025

Note: Unless specified, members and alternates serve at the pleasure of the North Central Florida Regional Planning Council.

PAGE LEFT BLANK INTENTIONALLY

**GILCHRIST COUNTY
TRANSPORTATION DISADVANTAGED COORDINATING BOARD**

MEETING MINUTES

Meeting Room
Suwannee River Economic Council, Inc.
1439 SW CR 307A
Trenton, Florida
Dial in Number: Toll free 1.888.585.9008
Conference Code: 864 183 272

Wednesday
July 13, 2022
1:30 p.m.

VOTING MEMBERS PRESENT IN PERSON

Leslie Esseck, Persons with Disabilities Representative
Richard Esseck, Vice-Chair, Elderly Representative, Vice-Chair
Geanelly Reveron, Florida Department of Transportation Representative
Krishna Stemple representing Brittny Keeling, Medical Community Representative
Elizabeth Wetherington, Regional Workforce Board Representative
Pastor Ralph Williams, Florida Department of Elder Affairs Representative
John Wisker, Florida Department of Children and Families Representative

VOTING MEMBERS PRESENT VIA TELECOMMUNICATIONS MEDIA TECHNOLOGY

Jeff Aboumrad, Florida Department of Education Representative
Lauren Adams, Florida Department of Transportation Representative
Sheryl Dick-Stanford, Florida Agency for Persons with Disabilities Representative

VOTING MEMBERS ABSENT

Reeda Harris, Florida Agency for Health Care Administration Representative
Commissioner Marion Poitevint, Chair
Michelle Walker-Crawford, Public Education Representative

OTHERS PRESENT IN PERSON

Jane Hurst, Trenton Medical Center, Inc.
Matthew Pearson, Suwannee River Economic Council, Inc.

STAFF PRESENT

Lynn Godfrey, North Central Florida Regional Planning Council

I. BUSINESS MEETING CALL TO ORDER

Vice-Chair Esseck called the meeting to order at 1:30 p.m.

A. Invocation

Pastor Williams gave the invocation.

B. Pledge of Allegiance

Vice-Chair Esseck led the Board in reciting the Pledge of Allegiance.

C. Roll Call

Vice-Chair Esseck conducted the roll call and stated a quorum is present.

II. CONSENT AGENDA

Krishna Stemple stated that the minutes do not reflect that she was present at the June 8, 2022 meeting.

Ms. Lynn Godfrey, North Central Florida Regional Planning Council Senior Planner, apologized for the error.

ACTION: Krishna Stemple moved to approve the consent agenda with the noted correction in the minutes. Pastor Williams seconded; motion passed unanimously.

II. NEW BUSINESS

A. 2021/26 Gilchrist County Transportation Disadvantaged Service Plan Amendments

Ms. Godfrey stated that Suwannee River Economic Council, Inc. is requesting amendments to the Gilchrist County Transportation Disadvantaged Service Plan. She said staff recommends the Board approve the proposed amendments.

Mr. Matthew Pearson, Suwannee River Economic Council, Inc. Executive Director, discussed the proposed amendments.

ACTION: John Wisker moved to approve the 2021/26 Gilchrist County Transportation Disadvantaged Service Plan amendments. Krishna Stemple seconded; motion passed unanimously.

B. Bylaws

Ms. Godfrey stated that the Florida Commission for the Transportation Disadvantaged requires the Board to review and approve the Bylaws annually. She said staff is not recommending any changes to the Bylaws.

ACTION: Sheryl Stanford moved to approve the Bylaws. Pastor Williams seconded; motion passed unanimously.

C. Grievance Procedures

Ms. Godfrey stated that the Florida Commission for the Transportation Disadvantaged requires the Board to review and approve the Grievance Procedures annually. She said staff is not recommending any changes to the Grievance Procedures.

ACTION: Jeff Aboumrad moved to approve the Grievance Procedures. Sheryl Stanford seconded; motion passed unanimously.

III. OTHER BUSINESS

Comments

Mr. Pearson apologized for not attending the last meeting. He discussed the process Suwannee River Economic Council, Inc. uses when vehicles are retired. He also stated that, due to drivers contracting COVID-19 and the difficulty hiring drivers, Suwannee River Economic Council, Inc. is not providing transportation service to the mealsite. He said they are making sure there are enough drivers to provide medical trips.

Vice-Chair Esseck asked Suwannee River Economic Council, Inc. to provide him with flyers to recruit drivers.

Krishna Stemple stated that she had the pleasure of meeting one of Suwannee River Economic Council, Inc.'s drivers. She said the driver was very pleasant and professional. She asked how much drivers are paid.

Mr. Pearson stated that starting driver pay is \$13.00/hour plus benefits. He thanked Ms. Stemple for letting him know about her experience with the driver.

IV. FUTURE MEETING DATES

Vice-Chair Esseck stated that the next meeting of the Board will be held Wednesday, October 12, 2022 at 1:30 p.m.

ADJOURNMENT

The meeting was adjourned at 2:15 p.m.

Coordinating Board Chair

Date

PAGE LEFT BLANK INTENTIONALLY



Serving Alachua
Bradford • Columbia
Dixie • Gilchrist • Hamilton
Lafayette • Levy • Madison
Suwannee • Taylor • Union Counties

2009 NW 67th Place, Gainesville, FL 32653-1603 • 352.955.2200

October 5, 2022

TO: Gilchrist County Transportation Disadvantaged Coordinating Board
FROM: Lynn Godfrey, AICP, Senior Planner
SUBJECT: 2021/22 Annual Performance Evaluation

RECOMMENDATION

Approve the Suwannee River Economic Council, Inc.'s 2021/22 annual performance evaluation.

BACKGROUND

The Board is required to annually evaluate the transportation services provided by Suwannee River Economic Council, Inc. Attached is Suwannee River Economic Council, Inc.'s draft 2021/22 annual performance evaluation. If you have any questions concerning the attached evaluation, please contact me at extension 110.

Attachment

T:\Lynn\TD2022\Gilchrist\Memos\eval.docx

PAGE LEFT BLANK INTENTIONALLY

COMMUNITY TRANSPORTATION COORDINATOR EVALUATION WORKBOOK

Florida Commission for the



Transportation Disadvantaged

Community Transportation Coordinator: Suwannee River Economic Council, Inc.

County: Gilchrist

Address: P.O. Box 70, Live Oak, FL 32060

Contact: Matthew Pearson, Executive Director Phone: 386-362-4115

Review period: July 1, 2021 - June 30, 2022

PAGE LEFT BLANK INTENTIONALLY

2021/22 Community Transportation Coordinator Annual Performance Evaluation

Approved by the

Gilchrist County
Transportation Disadvantaged Coordinating Board

2009 NW 67th Place
Gainesville, FL 32653-1603
www.ncfrpc.org/mtpo
352.955.2000

Marion Poitevint, Chair

with Assistance from



North Central Florida Regional Planning Council
2009 NW 67th Place
Gainesville, FL 32653-1603
www.ncfrpc.org
352.955.2200

October 12, 2022

THIS PAGE LEFT BLANK INTENTIONALLY

TABLE OF CONTENTS

Findings and Recommendations _____	1
Entrance Interview _____	2
General Information _____	3
Compliance With Chapter 427, Florida Statutes _____	12
Compliance With Rule 41-2, Florida Administrative Code _____	15
On-Site Observation of the System _____	20
Surveys _____	21
Cost _____	24
Level of Competition _____	25
Level of Coordination _____	26

PAGE LEFT BLANK INTENTIONALLY

I. FINDINGS AND RECOMMENDATIONS

A. General Information

Areas of Noncompliance: None
Recommendations: None
Timeline for Compliance: None

B. Chapter 427, Florida Statutes

Areas of Noncompliance: None
Recommendations: None
Timeline for Compliance: None

C. Rule 41-2, Florida Administrative Code

Areas of Noncompliance: None
Recommendations: None
Timeline for Compliance: None

D. On Site Observation

Areas of Noncompliance: None
Recommendations: None
Timeline for Compliance: None

E. Surveys

Areas of Noncompliance: None
Recommendations: None
Timeline for Compliance: None

F. Cost

Areas of Noncompliance: None
Recommendations: None
Timeline for Compliance: None

G. Level of Competition

Areas of Noncompliance: None
Recommendations: None
Timeline for Compliance: None

H. Level of Coordination

Areas of Noncompliance: None
Recommendations: None
Timeline for Compliance: None

II. ENTRANCE INTERVIEW

1. **Operating Environment:** Rural
2. **Organization Type:** Private Non-Profit
3. **Network Type:** Sole Provider
4. **Subcontracted Operators:** None
5. **Coordination Contractors:** None
6. **Transportation Alternatives:** None
7. **Purchasing Agencies:**
 - Elder Options
 - Florida Commission for the Transportation Disadvantaged
 - Medical Transportation Management, Inc.
 - ModivCare Solutions, LLC
 - Alivi NEMT Network
8. **Transportation Disadvantaged Helpline Calls:**

Number of Calls	Resolved Cases	Unresolved Cases
0	0	0

III. GENERAL INFORMATION

1. **What was the designation date of the Community Transportation Coordinator?**

7/01/21

2. **What is the complaint process?**

Suwannee River Economic Council, Inc.'s complaint process is attached.

3. **Does the community transportation coordinator have a complaint form?**

Yes (attached)

4. **Does the form have a section for resolution of the complaint?**

Yes

5. **Is a summary of complaints given to the Transportation Disadvantaged Board on a regular basis?**

Yes

6. **When is the dissatisfied party referred to the Florida Commission for the Transportation Disadvantaged Helpline?**

If the Transportation Director is unable to resolve a complaint, the complainant will be referred to the Transportation Disadvantaged Helpline.

7. **When a complaint is forwarded from the Transportation Disadvantaged Helpline, is the complaint entered into the local complaint file/process?**

Yes

8. **Does the Community Transportation Coordinator provide written rider/beneficiary information or brochures to inform riders/beneficiaries about transportation disadvantaged services?**

Yes (attached)

9. **Does the rider/ beneficiary information or brochure list the Transportation Disadvantaged Helpline phone number?**

Yes

10. **Does the rider/ beneficiary information or brochure list the complaint procedure?**

Yes

11. **What is the eligibility process for Transportation Disadvantaged sponsored riders?**

Individuals needing transportation assistance from Florida's Transportation Disadvantaged Program must complete an eligibility application (attached).

12. **Does public information state that accessible formats are available upon request?**

Yes

13. **Is public information available in accessible formats upon request?**

Yes

14. **What arrangements are in place to have accessible materials produced upon request?**

- Informational materials are available in large print upon request.
- The Florida Relay (7-1-1) service is available to residents in the State of Florida who are deaf, hard of hearing, deaf/blind or speech disabled that connects them to standard (voice) telephone users.

15. **Is the Florida Relay System phone number provided in informational materials?**

Yes

16. **Does the Community Transportation Coordinator have a contract or agreement with the Regional Workforce Board?**

No

17. **What innovative ideas have been implemented in the coordinated transportation system?**

Suwannee River Economic Council, Inc. has previously been awarded Mobility Enhancement Grant funds to provide transportation for shopping trips.

18. **Are there any areas where coordination can be improved?**

Transportation services purchased with local, state or federal funds should be purchased through Florida's Coordinated Transportation System. Currently, Florida's Managed Medical Care Program provides transportation services to its clients outside of Florida's Coordinated Transportation System.

19. **What barriers are there to the coordinated system?**

Ability to purchase transportation outside of Florida's Coordinated Transportation System.

20. **Are there any areas that the Community Transportation Coordinator feels the Florida Commission for the Transportation Disadvantaged should be aware of or assist with?**

No

21. **What funding agencies does the Florida Commission for the Transportation Disadvantaged need to work closely with in order to facilitate a better coordinated transportation system?**

Florida Agency for Health Care Administration and CareerSource Florida.

22. **How is the Community Transportation Coordinator marketing the voluntary dollar?**

No marketing system in place.

Complaint Process

All complaints received either written or verbal should be forwarded to the Director of Transportation. This includes complaints that have already been resolved by the dispatcher or driver.

Complaint form (attached) will be completed and resolution of complaint documented.

Complaints are files and kept to ensure proper tracking of complaints.

Complaints will be sent quarterly by County to the NCFPRC for reporting to the Local Coordinating Boards. Complaint totals will be submitted in the Annual Operating Report.

If resolution of complaint cannot be made by the Director of Transportation, the TD Helpline information should be shared with the rider.

SREC Transportation Complaint Form

Client Name: _____

Date: _____

Description of Incident:

Complaint Resolution:

Staff Signature: _____

Director of Transportation Signature: _____

Florida State Map
67 Counties



Gilchrist County Brochure

Revised 09/17/20

Accessible formats are available upon request

Gilchrist County – Programs, Services, Eligibility Housing Programs

Weatherization Programs

- Minor home repairs to reduce infiltration of air and energy consumption.

Eligibility: Income guidelines; 200% of U.S. poverty guidelines based on family size; owner, renter, site built or mobile home eligible.

State Housing Initiatives Partnership Program (SHIP)

- Emergency repairs, down payment and closing cost assistance for Homeownership.

Eligibility: Income guidelines and lending qualifications.

Transportation

- Public Transportation
Transport elderly and disadvantaged to the doctor, medical facilities, meal sites, drug stores and shopping.

Eligibility: Income guidelines, Medicaid, disabled.

For reservations, scheduling, complaints/commendations and/or questions call (844) 496-0624.

For Program information or complaints/commendations call TD Helpline at (800) 983-2435.

- Medicaid Broker Service
Transport Medicaid eligible clients to the doctor, medical facilities, meals sites and shopping.

Eligibility: Income guidelines, Medicaid Eligible

Any complaints not resolved can be forwarded to the Director of Transportation at (386) 362-4115, ext. 241.



We Do Business in Accordance With the
Federal Fair Housing Law
(The Fair Housing Amendments Act of 1988)

It is illegal to discriminate against any person because of race, color, religion, sex, handicap, familial status, or national origin.

Suwannee River Economic Council, Inc.

Established
1966



Serving
Bradford, Columbia, Dixie,
Gilchrist, Hamilton, Lafayette, Levy, Madison,
Putnam, Suwannee, Taylor and Union Counties

Administrative Office
Post Office Box 70
1171 Nobles Ferry Road, Bldg #2
Live Oak, Florida 32064
(386) 362-4115 Voice/TDD
mattpearson@suwanneec.net

Affirmative Action,
Fair Housing Agency

SREC's Vision

Our customers embrace the challenge to rise above the perils of poverty, and discover within themselves the courage and strength to succeed.

Suwannee River Economic Council's mission is to embrace a community full of potential; and to educate and motivate present and future generations to discover and realize the dream of a comfortable and productive lifestyle.

Visit our website
www.srecinc.org

Gilchrist County – Programs, Services, Eligibility Aging Programs

Alzheimer's Disease Initiative (ADI)

- Respite/ Case Management, Specialized Medical Equipment, Services and Supplies

Eligibility: Diagnosis as possible Alzheimer's or memory disorder.

Community Care for the Elderly (CCE)

- Case Management, Companion, Emergency Alert Response, Homemaker, Home Delivered Meals, Personal Care, Respite, Specialized Medical Equipment, Services and Supplies

Eligibility: 60+ years of age, frail and elderly.

Elder Farmers' Market Nutrition

(Available in Dixie, Gilchrist, Suwannee & Union County only)

- Fresh fruits and vegetables and information to educate elders on the nutritional benefits derived from consuming fresh produce.

Eligibility: 60+ years of age, 185% poverty guidelines

Emergency Home Energy Assistance for the Elderly (EHEAP)

- Assistance with utility bills, supply blankets, heaters, and fans.

Eligibility: 60+ years of age with household income after specified exclusions of no more than 150% of the federally established poverty income guidelines for the household size.

Home Care for the Elderly (HCE)

- Basic Subsidy, (Caregiver Allowance), Case Management, Home Delivered Meals, Homemaker, Respite, Specialized Medical Equipment, Services & Supplies and Special Subsidy.

Eligibility: 60+ years of age. Assets/Income limitations, requires 24 hour care by qualified caregiver.

Gilchrist County – Programs, Services, Eligibility
Aging Programs

Title III-B, C-1, C-2, III-E

- Congregate Meal Sites, Health Support, Homemaker, Home Delivered Meals, Nutrition Education, Outreach, Respite, Screening, Specialized Medical Equipment, Services and Supplies, Telephone Reassurance, and Transportation

Eligibility: 60+ years of age – C1 Program
 60+ years of age – C2 Program - Home Bound
 60+ years of age – III-B Program - Frail
 60+ years of age – III-E Program – Frail, Live-in Caregiver

Gilchrist County – Programs, Services, Eligibility
Emergency Assistance/Self Sufficiency

Community Services Block Grant (CSBG)

- Information & Referral; Family Self-Sufficiency; Case Management; Support Services; Application Assistance to other Social Service Agencies.

Eligibility: Income guidelines 125% of U.S. poverty guidelines and a documented emergency.

Energy Neighbor Fund

- Assistance with utilities, heating/cooling.

Eligibility: Must be Duke Energy customer; household income of no more than 125% of the federally established income guideline.

Low Income Home Energy Assistance Program

- Assistance with utility bills and utility crisis resolution.

Eligibility: Household income of no more than 150% of the federally established income guidelines and certain asset limitations; resident of the county.



SUWANNEE RIVER ECONOMIC COUNCIL INC.



[HOME](#)

[ADMIN FORMS](#)

[BOARD OF DIRECTORS](#)

[PROGRAMS](#)

[SERVICE AREAS](#)

[LOCATIONS](#)

[MEAL SITES](#)

TRANSPORTATION

Transportation Services are in the following counties only:

[Bradford](#), [Dixie](#), [Gilchrist](#), [Lafayette](#) and [Union County](#)

Funding: Florida Department of Transportation, Florida Commission for the Transportation Disadvantaged, Medicaid HMO's

Services: Public Transportation

Transport elderly and disadvantaged to the doctor, medical facilities, meal sites, drug stores and shopping.

For **Bradford County** reservations, scheduling, complaints/commendations and/or questions call (844) 496-0624.

For **Dixie, Gilchrist and Lafayette County** reservations, scheduling, complaints/commendations and/or questions call (352) 498-5018, extension 3, or (844-496-0624).

For **Union County** reservations, scheduling, complaints/commendations and/or questions call (844) 496-0624.

Any complaints not resolved can be forwarded to the Director of Transportation at (386) 362-4115, extension 241.

Telephone services for the hearing and / or speech impaired can be accessed through the Florida Telecommunication Relay System at (800) 955-8771 for TDD or (800) 955-8770 for Voice.

SERVICE AREAS

- Bradford County
- Columbia County
- Dixie County
- Gilchrist County
- Hamilton County
- Lafayette County
- Levy County
- Madison County
- Putnam County
- Suwannee County
- Taylor County
- Union County

Search ...

**TRANSPORTATION DISADVANTAGED PROGRAM
ELIGIBILITY CERTIFICATION APPLICATION**

Last Name _____ First Name _____

Middle Initial _____

Street Address _____ City _____

State _____ **Mail address:** _____

Zip Code _____ County _____

Date of Birth ____/____/____ Social Security # _____ Male ____ Female ____

Telephone Number (____) _____ - _____

Emergency Contact Name _____

Relationship _____

Telephone Number (____) _____ - _____

1. How many people reside in your household Including parents, caregivers, relatives or others involved in your living functions?

2. Does your household have an operational vehicle(s)?

Yes (a) Are you or another household member able to operate the vehicle(s)? Yes No
(b) Can you afford to operate the vehicle(s)? Yes No

No

3. Are you enrolled in any assistance programs:

- Managed Medical Care Program (Medicaid)
- Aging Program
- Other _____

Mail Completed application to: SREC

**255 SW 9th Avenue
Lake Butler, FL 32054
Tel # 844-496-0624**

Or

Give to Driver at time of trip

4. What other means of transportation are available for you to use?



5. Do you have a physical or mental disability as outlined in the Americans With Disabilities Act of 1990?
- Yes
 - No
6. Is your disability permanent?
- Yes
 - No

Please check or list any special needs, services or modes of transportation you require:

- | | | |
|---|--|---|
| <input type="checkbox"/> Powered Wheelchair | <input type="checkbox"/> Manual Wheelchair | <input type="checkbox"/> Powered Scooter/Cart |
| <input type="checkbox"/> Stretcher | <input type="checkbox"/> Walker | <input type="checkbox"/> Leg Braces |
| <input type="checkbox"/> Cane | <input type="checkbox"/> Respirator | <input type="checkbox"/> Oxygen CO2 |
| <input type="checkbox"/> Personal Care Attendant/Escort | | <input type="checkbox"/> Service Animal |

Other:

CERTIFICATION AND ACKNOWLEDGEMENT

I understand and affirm that the information provided in this application will be used to determine if I am eligible for non-emergency transportation services sponsored by Florida’s Transportation Disadvantaged Program. I understand that the information contained in this application is confidential and will be shared only with professionals involved in evaluating and determining eligibility for transportation services provided under Florida’s Transportation Disadvantaged Program. I certify that, to the best of my knowledge, the information in this application is true, correct, complete and made in good faith and any material omissions, falsifications, misstatements or misrepresentations in the above information could disqualify me from receiving services under Florida’s Transportation Disadvantaged Program.

APPLICANT SIGNATURE _____

DATE _____

Suwannee River Economic Council will notify you whether your application has been approved or denied within 15 business days. If your application is denied, you may file an appeal with Suwannee River Economic Council within 15 working days.

Application Processed by: _____

Signature: _____

Date : _____

Procedures for processing TD applications

1. **New Ride:** When client calls in for a ride verify through CTS software, to see if the client is a new or existing rider of the system. If new send the rider the TD application, by driver or mail to be completed. The rider CAN receive (1) ride prior to completion of application.



2. **Transportation Application (TD):** All TD riders must complete a transportation application form to determine eligibility and the appropriate means of service. Make sure the application is completed and signed. (If not, completed the application is denied, notify person by phone reason why). If application is denied, rider may file an appeal with Suwannee River Economic Council within 15 working days. (try to make contact with person)

3. **Verification of eligibility:** Once application is returned to office. Dispatcher will run the applicants, Name, Date of Birth and Social Security #, through the Florida Medicaid web portal at <https://sso.flmmis.com>. Determine if TD eligible or Covered Health plan through Broker. If Broker mark health plan at top of intake. Attach the Medicaid Eligibility Verification form to the TD application after printed.

4. **Contact Client** : Call rider and notify of eligibility for which services they are eligible. (TD or one of the health plans, let them know of the other transportation services available to them that we provide).

5. **Medicaid Reform Members:** Riders that are Medicaid Reform need to contact the designated provider on the back of the Medicaid Card or the number below;
 - ModivCare 1-866-779-0565- Health plans Sunshine, United Health Care, Humana
 - MTM-1-855-824-5700 – Staywell and Well Care
 - A2C-1-855-381-3778 - Prestige

6. **CTS Update:** Add client rider information in screen completing screen to include GEO and expiration date to be dated, approved one year from approval date. Complete Approval of application with your, signature and date of completion.

7. **Application processing Time:** SREC dispatcher will notify rider whether application has been approved or denied within 15 business days. If your application is denied, you may file an appeal with Suwannee River Economic Council within 15 working days.

8. **Application File Location:** After completion of the application process, file application in the appropriate County notebook in alphabetical order.

9. **Annually Update:** All TD riders are to complete an application annually by the assigned CTS expiration date on file.

I have read and understand the above procedures.

_____ Date _____



IV COMPLIANCE WITH CHAPTER 427, FLORIDA STATUTES

1. **Are the Community Transportation Coordinator subcontracts uniform?**
Not applicable, no subcontracted operators.

2. **Is the Florida Commission for the Transportation Disadvantaged standard contract utilized?**
Not applicable, no subcontracted operators.

3. **Do the contracts include performance standards for the transportation operators?**
Not applicable, no subcontracted operators.

4. **Do the contracts include the proper language concerning payment to subcontractors?**
Not applicable, no subcontracted operators.

5. **Were the following items submitted on time?**
 - a) **Annual Operating Report:** Yes
 - b) **Memorandum of Agreement:** Yes
 - c) **Transportation Disadvantaged Service Plan:** Yes
 - d) **Transportation Disadvantaged Trust Fund Grant Application:** Yes
 - e) **Other grant applications:** Yes

6. **Does the Community Transportation Coordinator monitor its subcontractors and how often is monitoring conducted?**
Not applicable, no subcontracted operators.

7. **Is a written report issued to the operator?**
Not applicable, no subcontracted operators.

8. **What type of monitoring does the Community Transportation Coordinator perform on its coordination contractors and how often is it conducted?**
Not applicable, no coordination contractors.

11. **Are coordination contracts reviewed annually as to the effectiveness and efficiency of the coordination contractor or the renewal of any Coordination Contracts?**
Not applicable, no coordination contractors.

12. **Are there any transportation alternatives?**
No

IV COMPLIANCE WITH CHAPTER 427, FLORIDA STATUTES

1. **Hours of Service:**

Transportation Disadvantaged Program: Monday through Friday, 6:00 a.m. to 6:00 p.m. excluding holidays.

2. **Call Intake Hours:**

Monday through Friday, 8:00 a.m. to 4:30 p.m.

3. **After Hours Reservations/Cancellations:**

After hours service is not provided through the Transportation Disadvantaged Program.

Trip cancellations should be made to Suwannee River Economic Council, Inc. with 24-hour advance notification. Trips must be canceled a minimum of two hours before the scheduled pick-up time.

4. **Minimum required notice for reservations:**

Transportation Disadvantaged Program: Trips must be scheduled twenty-four hours in advance for service needed Tuesday through Friday. Trips must be scheduled seventy-two hours in advance for service needed on Mondays.

5. **How far in advance can reservations be place (number of days)?**

14

6. **What type of arrangement does the Community Transportation Coordinator have with the local Regional Workforce Board?**

No agreement with the local Regional Workforce Board.

7. **Has the Community Transportation Coordinator developed any innovative transportation services for the local Regional Workforce Board?**

No

8. **Do the Community Transportation Coordinator and Local Coordinating Board review applications for federal, state and local Transportation Disadvantaged funding?**

Yes

9. **What are the trip priorities for the trips funded with Transportation Disadvantaged Program trips?**

Trips sponsored with Trip & Equipment Grant funds provided through Florida's Transportation Disadvantaged Program will be provided in the following ranking order based on funding availability:

Prescheduled Medical Appointments

- Dialysis appointments
- Cancer Care appointments
- Urgent Care appointments

Prescheduled Medical Appointments as defined by the American Board of Medical Specialties:

- Allergy and Immunology
- Colon & Rectal Surgery
- Dermatology
- Family Medicine
- Neurological Surgery
- Obstetrics & Gynecology
- Ophthalmology
- Orthopaedic Surgery
- Otolaryngology - Head and Neck Surgery
- Pediatrics
- Physical Medicine & Rehabilitation
- Plastic Surgery
- Psychiatry & Neurology
- Radiology
- Surgery
- Thoracic Surgery
- Urology

Other Medical Appointments

- Dental appointments
- Pharmacy

Mental Health Services provided by physicians, nurses who provide mental health services, licensed social workers, chemical dependency counselors, licensed professional counselors and licensed marriage and family counselors.

Nutritional (within Gilchrist County)

- Adult congregate meal programs
- Food stamp procurement
- Grocery shopping

Social Service Agency (within Gilchrist County)

- Public agency support services
- Senior programs

10. **How are the trip priorities carried out?**

Trip priorities are carried out in accordance with the above priority list established in the Gilchrist County Transportation Disadvantaged Service Plan.

V. COMPLIANCE WITH RULE 41-2 FLORIDA ADMINISTRATIVE CODE

1. **How is the Community Transportation Coordinator using school buses in the coordinated system?**

Suwannee River Economic Council, Inc. does not have a contract with the Gilchrist County School Board.

2. **How is the Community Transportation Coordinator using public transportation services in the coordinated system?**

Not applicable, no other public transportation services operating in the service area.

3. **Is there a goal for transferring passengers from paratransit to transit?**

Not applicable, no fixed route public transportation systems operating in the service area.

4. **What are the minimum liability insurance requirements?**

\$200,000/\$300,000

5. **What are the minimum liability insurance requirements in the operator and coordination contracts?**

Not applicable, no subcontracted operators/coordination contractors.

6. **Do the minimum liability insurance requirements exceed \$1 million per incident?**

No

7. **Date of last System Safety Program Plan Compliance Review:**

Internal audits of Suwannee River Economic Council, Inc.'s System Safety Program Plan are conducted annually. The most recent Florida Department of Transportation vehicle monitoring conducted in December 2021. The most recent Florida Department of Transportation triennial review was conducted in November 2021.

8. **Are the contracted operators in compliance with the System Safety Program Plan?**

Not applicable, no subcontracted operators.

9. **Do the Community Transportation Coordinator and its contracted operators (if any) comply with the Federal Transit Administration Anti-Drug and Alcohol Misuse Program (49 CFR Part 40, 655)?**

Yes

10. **Date of last Anti-Drug and Alcohol Misuse Program review:**

The most recent review of the Substance Abuse Policy was conducted by the Center for Urban Transportation Research during the triennial review in November 2021.



Bus Transit System Annual Safety and Security Certification

*Certifying Compliance with Rule 14-90, FAC to the
Florida Department of Transportation (FDOT)*

Certification Date (Current): 2021

Certification Year: (Previous): 2020

Name and Address of Bus Transit System: Suwannee River Economic Council, Inc.

1171 Nobles Ferry Rd.

Live Oak FL 32064

The Bus Transit System (Agency) named above hereby certifies the following:

- 1. The Agency has adopted a System Safety Program Plan (SSPP) and a Security Program Plan (SPP) pursuant to the standards set forth in Rule Chapter 14-90, Florida Administrative Code.*
- 2. The Agency is in compliance with its adopted SSPP and SPP.*
- 3. The Agency has performed annual safety inspections on all operational vehicles in accordance with Rule Chapter 14-90, Florida Administrative Code.*
- 4. The Agency has conducted reviews of SSPP and SPP and the plans are up to date.*

Blue Ink Signature:  Date: January 4, 2021
(Individual Responsible for Assurance of Compliance)

Name: Matt Pearson Title: Executive Director

Name and address of entity(ies) which has (have) performed bus safety inspections and security assessments:

Name: See Attached

Address: See Attached

Name of Qualified Mechanic who Performed Annual Inspections: See Attached

Standards	Comments
Local toll free phone number must be posted in all vehicles.	Suwannee River Economic Council, Inc. posts local toll free phone number in all vehicles.
Vehicle Cleanliness	Suwannee River Economic Council, Inc. cleans all vehicles (interior/exterior) at least once a week.
Passenger/Trip Database	Suwannee River Economic Council, Inc. maintains a passenger database.
Adequate seating	Suwannee River Economic Council, Inc. provides adequate seating for all passengers.
Driver Identification	Suwannee River Economic Council, Inc. requires drivers to identify themselves in a manner that is conducive to communications with specific passengers.
Passenger Assistance	Suwannee River Economic Council, Inc. requires drivers to provide passengers with boarding and exiting assistance.
Smoking, Eating and Drinking	Smoking is prohibited in any vehicle. Eating and drinking on board vehicles is not permitted unless medically necessary.
Two-way Communications	All vehicles are equipped with two-way communications.
Air Conditioning/Heating	All vehicles have working air conditioners and heaters.
Billing Requirements	Suwannee River Economic Council, Inc. complies with Section 287.0585, Florida Statutes.
Transport of Escorts and dependent children policy	Suwannee River Economic Council, Inc. requires children under the age of 16 to be accompanied by and escort. Escorts must be provided by the passenger and able to provide necessary assistance to the passenger. Escorts are transported at the rates described in the established rate structure.
Use, Responsibility, and cost of child restraint devices	Suwannee River Economic Council, Inc. requires all passengers under the age of 4 and or 50 pounds to use a child restraint device. Child restraint devices must be provided by the passenger.

Out-of-Service Area trips	Suwannee River Economic Council, Inc. may require medical provider verification for any out of county transportation.
CPR/1st Aid	Suwannee River Economic Council, Inc. does not require drivers to be trained in CPR. Suwannee River Economic Council, Inc. requires that all vehicles be equipped with biohazard kits as required by State and Federal regulations.
Driver Criminal Background Screening	Suwannee River Economic Council, Inc. conducts motor vehicle registration checks on drivers every six months.
Passenger Property	Suwannee River Economic Council, Inc. allows passengers to have personal property that they can place on their lap or stow under the seat. Passengers must be able to independently carry all items brought on the vehicle.
Advance reservation requirements	Suwannee River Economic Council, Inc. requires trips to be scheduled by 4:00 p.m. the day before service is requested.
Pick-up Window	Passengers shall be picked up 30 minutes before or 30 minutes after their scheduled pick-up time.

Measurable Standards/Goals	Standard/Goal	Is the Community Transportation Coordinator meeting the Standard?
Public Transit Ridership	Not applicable	Not applicable
On-time performance	90%	Yes
Accidents	No more than 1/100,000 miles	Yes
Roadcalls	No more than 5 roadcalls during the evaluation period.	Yes
Complaints	No more than 2/1,000 trips.	Yes
Call-Hold Time	Not applicable	Not applicable

County: Gilchrist
 CTC: Suwannee River Economic Council, Inc.
 Contact: Matt Pearson
 PO Box 70
 Live Oak, FL 32064
 386-362-4115
 Email: mpearson@suwanneec.net

Demographics	Number
Total County Population	0
Unduplicated Head Count	307



Trips By Type of Service				Vehicle Data			
	2020	2021	2022		2020	2021	2022
Fixed Route (FR)	0	0	0	Vehicle Miles	96,278	87,496	101,069
Deviated FR	0	0	0	Roadcalls	0	0	0
Complementary ADA	0	0	0	Accidents	0	0	1
Paratransit	5,594	3,611	4,747	Vehicles	3	9	10
TNC	0	0	0	Drivers	7	8	8
Taxi	0	0	0				
School Board (School Bus)	0	0	0				
Volunteers	0	0	0				
TOTAL TRIPS	5,594	3,611	4,747				
Passenger Trips By Trip Purpose				Financial and General Data			
Medical	4,556	3,566	4,550	Expenses	\$330,466	\$370,858	\$408,492
Employment	0	8	0	Revenues	\$477,212	\$511,526	\$531,287
Ed/Train/DayCare	35	4	0	Commendations	0	0	0
Nutritional	427	0	2	Complaints	0	0	0
Life-Sustaining/Other	576	33	195	Passenger No-Shows	486	191	164
TOTAL TRIPS	5,594	3,611	4,747	Unmet Trip Requests	1	0	0
Passenger Trips By Revenue Source				Performance Measures			
CTD	3,000	1,701	1,925	Accidents per 100,000 Miles	0	0	0.99
AHCA	1,887	1,614	2,460	Miles between Roadcalls	0	0	0
APD	0	0	0	Avg. Trips per Passenger	11.83	19.84	15.46
DOEA	675	0	0	Cost per Trip	\$59.08	\$102.70	\$86.05
DOE	0	0	0	Cost per Paratransit Trip	\$59.08	\$102.70	\$86.05
Other	32	296	362	Cost per Total Mile	\$3.43	\$4.24	\$4.04
TOTAL TRIPS	5,594	3,611	4,747	Cost per Paratransit Mile	\$3.43	\$4.24	\$4.04
Trips by Provider Type							
CTC	5,594	3,611	4,747				
Transportation Operator	0	0	0				
Coordination Contractor	0	0	0				
TOTAL TRIPS	5,594	3,611	4,747				

VI ON-SITE OBSERVATION OF THE SYSTEM

1. **Date of Observation:**
An on-site observation was not conducted due to COVID-19 safety concerns.
2. **Location:**
3. **Number of Passengers picked up/dropped off:**
Ambulatory:
Non-Ambulatory:
4. **Was the driver on time?**
5. **Did the driver provide passenger assistance?**
6. **Was the driver wearing identification?**
7. **Did the driver ensure the passengers were properly secured?**
8. **Was the interior of the vehicle free of dirt, grime, oil, trash, torn upholstery, damaged or broken seats, protruding metal or other objects or materials which could soil items placed in the vehicle or provide discomfort for the passenger?**
9. **Is there a sign posted on the interior of the vehicle with both a local phone number and the Transportation Disadvantaged Program Helpline for comments/complaints/commendations?**
10. **Did the vehicle have working heat and air conditioning?**
11. **Did the vehicle have two-way communications in good working order?**
12. **If used, was the lift in good working order?**
13. **Was there safe and appropriate seating for all passengers?**
14. **Did the driver properly use the lift and secure the passenger?**

VII SURVEYS

How often do your ride?

Daily 7 days/week	1-2 Times/Week	3-5 Times/Week	Other
0	3	2	0

Have you been denied transportation services?

Yes 0

No 5

What is your trip purpose?

Medical	Education/Training	Employment	Other
5	0	0	0

Do you have concerns with your service?

Yes 0

No 5

What types of concerns do you have?

Late Trips	Driver Behavior	Availability	Vehicle Condition	Customer Service	Cost
0	0	0	0	0	0

VIII COST



CTC Expense Sources

County: Gilchrist

CTC Status: Submitted

CTC Organization: Suwannee River Economic Council, Inc.

Fiscal Year: 07/01/2021 - 06/30/2022

CTD Status: Under Review

Expense Sources	Selected Reporting Period			Previous Reporting Period		
	CTC & Transportation Operators	Coordination Contractors	Total	CTC & Transportation Operators	Coordination Contractors	Total
Labor	\$ 169,392	\$ 0	\$ 169,392	\$ 127,975	\$ 0	\$ 127,975
Fringe Benefits	\$ 89,604	\$ 0	\$ 89,604	\$ 61,616	\$ 0	\$ 61,616
Services	\$ 16,603	\$ 0	\$ 16,603	\$ 12,371	\$ 0	\$ 12,371
Materials & Supplies Consumed	\$ 77,289	\$ 0	\$ 77,289	\$ 46,845	\$ 0	\$ 46,845
Utilities	\$ 11,244	\$ 0	\$ 11,244	\$ 9,470	\$ 0	\$ 9,470
Casualty & Liability	\$ 26,371	\$ 0	\$ 26,371	\$ 20,636	\$ 0	\$ 20,636
Taxes	\$ 356	\$ 0	\$ 356	\$ 317	\$ 0	\$ 317
Miscellaneous	\$ 1,494	\$ 0	\$ 1,494	\$ 1,032	\$ 0	\$ 1,032
Interest	\$ 0	\$ 0	\$ 0	\$ 0	\$ 0	\$ 0
Leases & Rentals	\$ 0	\$ 0	\$ 0	\$ 0	\$ 0	\$ 0
Capital Purchases	\$ 4,623	\$ 0	\$ 4,623	\$ 79,770	\$ 0	\$ 79,770
Contributed Services	\$ 10,430	\$ 0	\$ 10,430	\$ 10,826	\$ 0	\$ 10,826
Allocated Indirect Expenses	\$ 0	\$ 0	\$ 0	\$ 0	\$ 0	\$ 0
Purchased Transportation Services						
Bus Pass	\$ 0	N/A	\$ 0	\$ 0	N/A	\$ 0
School Board (School Bus)	\$ 0	N/A	\$ 0	\$ 0	N/A	\$ 0
Transportation Network Companies (TNC)	\$ 0	N/A	\$ 0	\$ 0	N/A	\$ 0
Taxi	\$ 0	N/A	\$ 0	\$ 0	N/A	\$ 0
Contracted Operator	\$ 1,086	N/A	\$ 1,086	\$ 0	N/A	\$ 0
Total - Expense Sources	\$ 408,492	\$ 0	\$ 408,492	\$ 370,858	\$ 0	\$ 370,858

IX LEVEL OF COMPETITION

1. Inventory of Transportation Operators in the Service Area

	Transportation Providers Available	Transportation Providers Contracted in the System.
Private Non-Profit	1	1
Private For-Profit	0	0
Government	0	0
Public Transit Agency	0	0
Total	1	1

2. **How many of the operators are coordination contractors?** _____ 0 _____

3. **Does the Community Transportation Coordinator have a competitive procurement process?**

Yes _____

4. **What methods have been used in selection of the transportation operators?**

<input type="checkbox"/>	Low bid
<input type="checkbox"/>	Requests for qualifications
<input type="checkbox"/>	Negotiation only

<input checked="" type="checkbox"/>	Requests for proposals
<input type="checkbox"/>	Requests for interested parties
<input type="checkbox"/>	

X LEVEL OF COORDINATION

1. Public Information – How is public information distributed about transportation services in the community?

Suwannee River Economic Council, Inc. provides information about the transportation program on the agency's website, and distributes brochures in the community.

2. Eligibility – How is passenger eligibility coordinated for local transportation services?

Suwannee River Economic Council, Inc. determines passenger eligibility except for passengers using Florida's Managed Medical Care Program.

3. Call Intake – To what extent is transportation coordinated to ensure that a user can reach a Reservationist on the first call?

Individuals call Suwannee River Economic Council, Inc. to schedule all trips except trips provided through Florida's Managed Medical Care Program.

4. Reservations –How is the duplication of a reservation prevented?

Suwannee River Economic Council, Inc. handles all trip reservations except trip reservations for Florida's Managed Medical Care Program.

5. Trip Allocation – How is the allocation of trip requests to providers coordinated?

Suwannee River Economic Council, Inc. handles all trip allocations.

6. Scheduling – How is the trip assignment to vehicles coordinated?

Suwannee River Economic Council, Inc. schedules all trips except for trips provided in Florida's Managed Medical Care Program.

7. General Service Monitoring – How is the overseeing of transportation operators coordinated?

Not applicable, no subcontracted operators.

PAGE LEFT BLANK INTENTIONALLY



Serving Alachua
Bradford • Columbia
Dixie • Gilchrist • Hamilton
Lafayette • Levy • Madison
Suwannee • Taylor • Union Counties

2009 NW 67th Place, Gainesville, FL 32653-1603 • 352.955.2200

October 5, 2022

TO: Gilchrist County Transportation Disadvantaged Coordinating Board
FROM: Lynn Godfrey, AICP, Senior Planner
SUBJECT: 2021/2022 Annual Operating Report

RECOMMENDATION

Review Suwannee River Economic Council, Inc's 2021/2022 Annual Operating Report.

BACKGROUND

Suwannee River Economic Council, Inc. is required to submit an annual operating report to the Florida Commission for the Transportation Disadvantaged by September 15 of each year. Attached is Suwannee River Economic Council, Inc.'s 2021/2022 Annual Operating Report.

If you have any questions concerning the attached report, please contact me at extension 110.

Attachment

T:\Lynn\TD2022\Gilchrist\Memos\aur.docx

PAGE LEFT BLANK INTENTIONALLY



CTC Organization

County: Gilchrist

Fiscal Year: 7/1/2021 - 6/30/2022

CTC Status: Submitted

CTD Status: Under Review

Date Initiated: 8/15/2022

CTC Organization Name: Suwannee River Economic Council, Inc.

Address: PO Box 70

City: Live Oak

State: FL

Zip Code: 32064

Organization Type: Private Non Profit

Network Type: Partial Brokerage

Operating Environment: Rural

Transportation Operators: No

Number of Transportation Operators: 0

Coordination Contractors: No

Number of Coordination Contractors: 0

Provide Out of County Trips: Yes

Local Coordinating Board (LCB) Chairperson: Marion Potivent

CTC Contact: Matt Pearson

CTC Contact Title: Executive Director

CTC Contact Email: mpearson@suwanneec.net

Phone: (386) 362-4115

CTC Certification

I, Matt Pearson, as the authorized Community Transportation Coordinator (CTC) Representative, hereby certify, under the penalties of perjury as stated in Chapter 837.06, F.S., that the information contained in this report is true, accurate, and in accordance with the accompanying instructions.

CTC Representative (signature): _____

LCB Certification

I, Marion Potivent, as the Local Coordinating Board Chairperson, hereby, certify in accordance with Rule 41-2.007(6), F.A.C. that the Local Coordinating Board has reviewed this report and the Planning Agency has received a copy.

LCB Chairperson (signature): _____



CTC Trips

County: Gilchrist

CTC Status: Submitted

CTC Organization: Suwannee River Economic Council, Inc.

Fiscal Year: 07/01/2021 - 06/30/2022

CTD Status: Under Review

	Selected Reporting Period			Previous Reporting Period		
	CTC & Transportation Operators	Coordination Contractors	Total	CTC & Transportation Operators	Coordination Contractors	Total
Service Type - One Way						
Fixed Route/Fixed Schedule						
Daily Pass Trips	0	N/A	0	0	N/A	0
Weekly Pass Trips	0	N/A	0	0	N/A	0
Monthly Pass Trips	0	N/A	0	0	N/A	0
Deviated Fixed Route Service	0	N/A	0	0	N/A	0
Complementary ADA Service	0	N/A	0	0	N/A	0
Paratransit						
Ambulatory	3,408	0	3,408	2,125	0	2,125
Non-Ambulatory	1,339	0	1,339	1,486	0	1,486
Stretcher	0	0	0	0	0	0
Transportation Network Companies	0	N/A	0	0	N/A	0
Taxi	0	N/A	0	0	N/A	0
School Board (School Bus)	0	N/A	0	0	N/A	0
Volunteers	0	N/A	0	0	N/A	0
Total - Service Type	4,747	0	4,747	3,611	0	3,611
Contracted Transportation Operator						
How many of the total trips were provided by Contracted Transportation Operators? (If the CTC provides transportation services, do not include the CTC)	0	N/A	0	0	N/A	0
Total - Contracted Transportation Operator Trips	0	0	0	0	0	0
Revenue Source - One Way						
Agency for Health Care Administration (AHCA)	2,460	0	2,460	1,614	0	1,614
Agency for Persons with Disabilities (APD)	0	0	0	0	0	0
Comm for the Transportation Disadvantaged (CTD)	1,925	N/A	1,925	1,701	N/A	1,701
Dept of Economic Opportunity (DEO)	0	0	0	0	0	0
Dept of Children and Families (DCF)	0	0	0	0	0	0
Dept of Education (DOE)	0	0	0	0	0	0
Dept of Elder Affairs (DOEA)	0	0	0	0	0	0
Dept of Health (DOH)	0	0	0	0	0	0
Dept of Juvenile Justice (DJJ)	0	0	0	0	0	0
Dept of Transportation (DOT)	362	0	362	296	0	296
Local Government	0	0	0	0	0	0
Local Non-Government	0	0	0	0	0	0
Other Federal & State Programs	0	0	0	0	0	0
Total - Revenue Source	4,747	0	4,747	3,611	0	3,611



CTC Trips (cont'd)

County: Gilchrist

CTC Status: Submitted

CTC Organization: Suwannee River Economic Council, Inc.

Fiscal Year: 07/01/2021 - 06/30/2022

CTD Status: Under Review

	Selected Reporting Period			Previous Reporting Period		
	CTC & Transportation Operators	Coordination Contractors	Total	CTC & Transportation Operators	Coordination Contractors	Total
Passenger Type - One Way						
Older Adults	3,201	0	3,201	0	0	0
Children At Risk	10	0	10	16	0	16
Persons With Disabilities	1,339	0	1,339	1,486	0	1,486
Low Income	197	0	197	2,109	0	2,109
Other	0	0	0	0	0	0
Total - Passenger Type	4,747	0	4,747	3,611	0	3,611
Trip Purpose - One Way						
Medical	4,550	0	4,550	3,566	0	3,566
Employment	0	0	0	8	0	8
Education/Training/Daycare	0	0	0	4	0	4
Nutritional	2	0	2	0	0	0
Life-Sustaining/Other	195	0	195	33	0	33
Total - Trip Purpose	4,747	0	4,747	3,611	0	3,611
Unduplicated Passenger Head Count (UDPHC)						
UDPHC	307	0	307	182	0	182
Total - UDPHC	307	0	307	182	0	182
Unmet & No Shows						
Unmet Trip Requests	0	N/A	0	0	N/A	0
No Shows	164	N/A	164	191	N/A	191
Customer Feedback						
Complaints	0	N/A	0	0	N/A	0
Commendations	0	N/A	0	0	N/A	0



**Transportation
Disadvantaged**

CTC Vehicles & Drivers

County: Gilchrist

CTC Status: Submitted

CTC Organization: Suwannee River
Economic Council,
Inc.

Fiscal Year: 07/01/2021 - 06/30/2022

CTD Status: Under Review

	Selected Reporting Period			Previous Reporting Period		
	CTC & Transportation Operators	Coordination Contractors	Total	CTC & Transportation Operators	Coordination Contractors	Total
Vehicle Miles						
Deviated Fixed Route Miles	0	N/A	0	0	N/A	0
Complementary ADA Service Miles	0	N/A	0	0	N/A	0
Paratransit Miles	101,069	0	101,069	87,496	0	87,496
Transportation Network Companies (TNC) Miles	0	N/A	0	0	N/A	0
Taxi Miles	0	N/A	0	0	N/A	0
School Board (School Bus) Miles	0	N/A	0	0	N/A	0
Volunteers Miles	0	N/A	0	0	N/A	0
Total - Vehicle Miles	101,069	0	101,069	87,496	0	87,496
Roadcalls & Accidents						
Roadcalls	0	0	0	0	0	0
Chargeable Accidents	1	0	1	0	0	0
Vehicle Inventory						
Total Number of Vehicles	10	0	10	9	0	9
Number of Wheelchair Accessible Vehicles	10	0	10	9	0	9
Drivers						
Number of Full Time & Part Time Drivers	8	0	8	8	0	8
Number of Volunteer Drivers	0	0	0	0	0	0



CTC Revenue Sources

County: Gilchrist

CTC Status: Submitted

CTC Organization: Suwannee River
Economic Council,
Inc.

Fiscal Year: 07/01/2021 - 06/30/2022

CTD Status: Under Review

	Selected Reporting Period			Previous Reporting Period		
	CTC & Transportation Operators	Coordination Contractors	Total	CTC & Transportation Operators	Coordination Contractors	Total
Revenue Sources						
Agency for Health Care Administration (AHCA)	\$ 85,786	\$ 0	\$ 85,786	\$ 59,537	\$ 0	\$ 59,537
Agency for Persons with Disabilities (APD)	\$ 0	\$ 0	\$ 0	\$ 0	\$ 0	\$ 0
Dept of Economic Opportunity (DEO)	\$ 0	\$ 0	\$ 0	\$ 0	\$ 0	\$ 0
Dept of Children and Families (DCF)	\$ 0	\$ 0	\$ 0	\$ 0	\$ 0	\$ 0
Dept of Education (DOE)	\$ 0	\$ 0	\$ 0	\$ 0	\$ 0	\$ 0
Dept of Elder Affairs (DOEA)	\$ 0	\$ 0	\$ 0	\$ 0	\$ 0	\$ 0
Dept of Health (DOH)	\$ 0	\$ 0	\$ 0	\$ 0	\$ 0	\$ 0
Dept of Juvenile Justice (DJJ)	\$ 0	\$ 0	\$ 0	\$ 0	\$ 0	\$ 0
Commission for the Transportation Disadvantaged (CTD)						
Non-Sponsored Trip Program	\$ 93,873	N/A	\$ 93,873	\$ 97,433	N/A	\$ 97,433
Non-Sponsored Capital Equipment	\$ 0	N/A	\$ 0	\$ 0	N/A	\$ 0
Rural Capital Equipment	\$ 0	N/A	\$ 0	\$ 0	N/A	\$ 0
TD Other	\$ 0	N/A	\$ 0	\$ 0	N/A	\$ 0
Department of Transportation (DOT)						
49 USC 5307	\$ 0	\$ 0	\$ 0	\$ 0	\$ 0	\$ 0
49 USC 5310	\$ 0	\$ 0	\$ 0	\$ 0	\$ 0	\$ 0
49 USC 5311	\$ 340,698	\$ 0	\$ 340,698	\$ 267,992	\$ 0	\$ 267,992
49 USC 5311 (f)	\$ 0	\$ 0	\$ 0	\$ 0	\$ 0	\$ 0
Block Grant	\$ 0	\$ 0	\$ 0	\$ 0	\$ 0	\$ 0
Service Development	\$ 0	\$ 0	\$ 0	\$ 0	\$ 0	\$ 0
Commuter Assistance Program	\$ 0	\$ 0	\$ 0	\$ 0	\$ 0	\$ 0
Other DOT	\$ 0	\$ 0	\$ 0	\$ 75,738	\$ 0	\$ 75,738
Local Government						
School Board (School Bus)	\$ 0	N/A	\$ 0	\$ 0	N/A	\$ 0
County Cash	\$ 0	\$ 0	\$ 0	\$ 0	\$ 0	\$ 0
County In-Kind	\$ 0	\$ 0	\$ 0	\$ 0	\$ 0	\$ 0
City Cash	\$ 0	\$ 0	\$ 0	\$ 0	\$ 0	\$ 0
City In-Kind	\$ 0	\$ 0	\$ 0	\$ 0	\$ 0	\$ 0
Other Cash	\$ 0	\$ 0	\$ 0	\$ 0	\$ 0	\$ 0
Other In-Kind	\$ 0	\$ 0	\$ 0	\$ 0	\$ 0	\$ 0
Local Non-Government						
Farebox	\$ 0	\$ 0	\$ 0	\$ 0	\$ 0	\$ 0
Donations/Contributions	\$ 0	\$ 0	\$ 0	\$ 0	\$ 0	\$ 0
In-Kind Services	\$ 0	\$ 0	\$ 0	\$ 0	\$ 0	\$ 0
Other Non-Government	\$ 10,930	\$ 0	\$ 10,930	\$ 10,826	\$ 0	\$ 10,826
Other Federal & State Programs						
Other Federal Programs	\$ 0	\$ 0	\$ 0	\$ 0	\$ 0	\$ 0
Other State Programs	\$ 0	\$ 0	\$ 0	\$ 0	\$ 0	\$ 0
Total - Revenue Sources	\$ 531,287	\$ 0	\$ 531,287	\$ 511,526	\$ 0	\$ 511,526



**Transportation
Disadvantaged**

CTC Expense Sources

County: Gilchrist

CTC Status: Submitted

CTC Organization: Suwannee River
Economic Council,
Inc.

Fiscal Year: 07/01/2021 - 06/30/2022

CTD Status: Under Review

Expense Sources	Selected Reporting Period			Previous Reporting Period		
	CTC & Transportation Operators	Coordination Contractors	Total	CTC & Transportation Operators	Coordination Contractors	Total
Labor	\$ 169,392	\$ 0	\$ 169,392	\$ 127,975	\$ 0	\$ 127,975
Fringe Benefits	\$ 89,604	\$ 0	\$ 89,604	\$ 61,616	\$ 0	\$ 61,616
Services	\$ 16,603	\$ 0	\$ 16,603	\$ 12,371	\$ 0	\$ 12,371
Materials & Supplies Consumed	\$ 77,289	\$ 0	\$ 77,289	\$ 46,845	\$ 0	\$ 46,845
Utilities	\$ 11,244	\$ 0	\$ 11,244	\$ 9,470	\$ 0	\$ 9,470
Casualty & Liability	\$ 26,371	\$ 0	\$ 26,371	\$ 20,636	\$ 0	\$ 20,636
Taxes	\$ 356	\$ 0	\$ 356	\$ 317	\$ 0	\$ 317
Miscellaneous	\$ 1,494	\$ 0	\$ 1,494	\$ 1,032	\$ 0	\$ 1,032
Interest	\$ 0	\$ 0	\$ 0	\$ 0	\$ 0	\$ 0
Leases & Rentals	\$ 0	\$ 0	\$ 0	\$ 0	\$ 0	\$ 0
Capital Purchases	\$ 4,623	\$ 0	\$ 4,623	\$ 79,770	\$ 0	\$ 79,770
Contributed Services	\$ 10,430	\$ 0	\$ 10,430	\$ 10,826	\$ 0	\$ 10,826
Allocated Indirect Expenses	\$ 0	\$ 0	\$ 0	\$ 0	\$ 0	\$ 0
Purchased Transportation Services						
Bus Pass	\$ 0	N/A	\$ 0	\$ 0	N/A	\$ 0
School Board (School Bus)	\$ 0	N/A	\$ 0	\$ 0	N/A	\$ 0
Transportation Network Companies (TNC)	\$ 0	N/A	\$ 0	\$ 0	N/A	\$ 0
Taxi	\$ 0	N/A	\$ 0	\$ 0	N/A	\$ 0
Contracted Operator	\$ 1,086	N/A	\$ 1,086	\$ 0	N/A	\$ 0
Total - Expense Sources	\$ 408,492	\$ 0	\$ 408,492	\$ 370,858	\$ 0	\$ 370,858

County: Gilchrist
 CTC: Suwannee River Economic Council, Inc.
 Contact: Matt Pearson
 PO Box 70
 Live Oak, FL 32064
 386-362-4115
 Email: mpearson@suwanneec.net

Demographics	Number
Total County Population	0
Unduplicated Head Count	307



Trips By Type of Service	2020	2021	2022
Fixed Route (FR)	0	0	0
Deviated FR	0	0	0
Complementary ADA	0	0	0
Paratransit	5,594	3,611	4,747
TNC	0	0	0
Taxi	0	0	0
School Board (School Bus)	0	0	0
Volunteers	0	0	0
TOTAL TRIPS	5,594	3,611	4,747

Vehicle Data	2020	2021	2022
Vehicle Miles	96,278	87,496	101,069
Roadcalls	0	0	0
Accidents	0	0	1
Vehicles	3	9	10
Drivers	7	8	8

Passenger Trips By Trip Purpose	2020	2021	2022
Medical	4,556	3,566	4,550
Employment	0	8	0
Ed/Train/DayCare	35	4	0
Nutritional	427	0	2
Life-Sustaining/Other	576	33	195
TOTAL TRIPS	5,594	3,611	4,747

Financial and General Data	2020	2021	2022
Expenses	\$330,466	\$370,858	\$408,492
Revenues	\$477,212	\$511,526	\$531,287
Commendations	0	0	0
Complaints	0	0	0
Passenger No-Shows	486	191	164
Unmet Trip Requests	1	0	0

Passenger Trips By Revenue Source	2020	2021	2022
CTD	3,000	1,701	1,925
AHCA	1,887	1,614	2,460
APD	0	0	0
DOEA	675	0	0
DOE	0	0	0
Other	32	296	362
TOTAL TRIPS	5,594	3,611	4,747

Performance Measures	2020	2021	2022
Accidents per 100,000 Miles	0	0	0.99
Miles between Roadcalls	0	0	0
Avg. Trips per Passenger	11.83	19.84	15.46
Cost per Trip	\$59.08	\$102.70	\$86.05
Cost per Paratransit Trip	\$59.08	\$102.70	\$86.05
Cost per Total Mile	\$3.43	\$4.24	\$4.04
Cost per Paratransit Mile	\$3.43	\$4.24	\$4.04

Trips by Provider Type	2020	2021	2022
CTC	5,594	3,611	4,747
Transportation Operator	0	0	0
Coordination Contractor	0	0	0
TOTAL TRIPS	5,594	3,611	4,747

PAGE LEFT BLANK INTENTIONALLY

ATTENDANCE RECORD

**GILCHRIST COUNTY
TRANSPORTATION DISADVANTAGED
COORDINATING BOARD**

MEMBER/ORGANIZATION	NAME	10/13/2021	3/9/2022	6/8/2022	7/13/2022
Chair	Commissioner Marion Poitevint	A	A	A	A
Florida Department of Transportation	Geanelly Reveron			A	P
Alternate Member	Lauren Adams	P	P	P	P
Florida Department of Children and Families	John Wisker	P	P	P	P
Alternate Member	Amy Burton	A	A	A	A
Florida Agency for Health Care Administration	Reeda Harris	P	P	P	A
Alternate Member	Pamela Hagley	A	A	A	A
Florida Department of Education	Jeffrey Aboumrad	P	P	A	P
Alternate Member	(Vacant)				
Florida Department of Elder Affairs	Pastor Ralph Williams	P	A	A	P
Alternate Member	(Vacant)				
Florida Agency for Persons with Disabilities	Sheryl Dick-Stanford	P	P	P	P
Alternate Member	Sylvia Bamburg	A	A	A	A
Florida Association for Community Action	(Vacant)				
Alternate Member	(Vacant)				
Public Education	Michelle Walker-Crawford	A	A	A	A
Alternate Member	(Vacant)				
Citizen Advocate	(Vacant)				
Alternate Member	(Vacant)				
Citizen Advocate-User	Maxine Parrish				
Alternate Member	(Vacant)				
Elderly	Richard Esseck	P	P	P	P
Alternate Member	(Vacant)				
Veterans	(Vacant)				
Alternate Member	(Vacant)				
Persons with Disabilities	Leslie Esseck	P	P	P	P
Alternate Member	(Vacant)				
Children at Risk	(Vacant)				
Alternate Member	(Vacant)				
Local Medical Community	Brittney Keeling	A	P	P	A
Alternate Member	Krishna Stemple	A	A	P	P
Regional Workforce Board	Elizabeth Wetherington			P	P
Alternate Member	(Vacant)				

ATTENDANCE POLICY: According to Article III, Section 5 of the Coordinating Board bylaws:

"The North Central Florida Regional Planning Council shall review and consider rescinding

the appointment of any voting member on the Board who fails to attend three consecutive meetings."

PAGE LEFT BLANK INTENTIONALLY